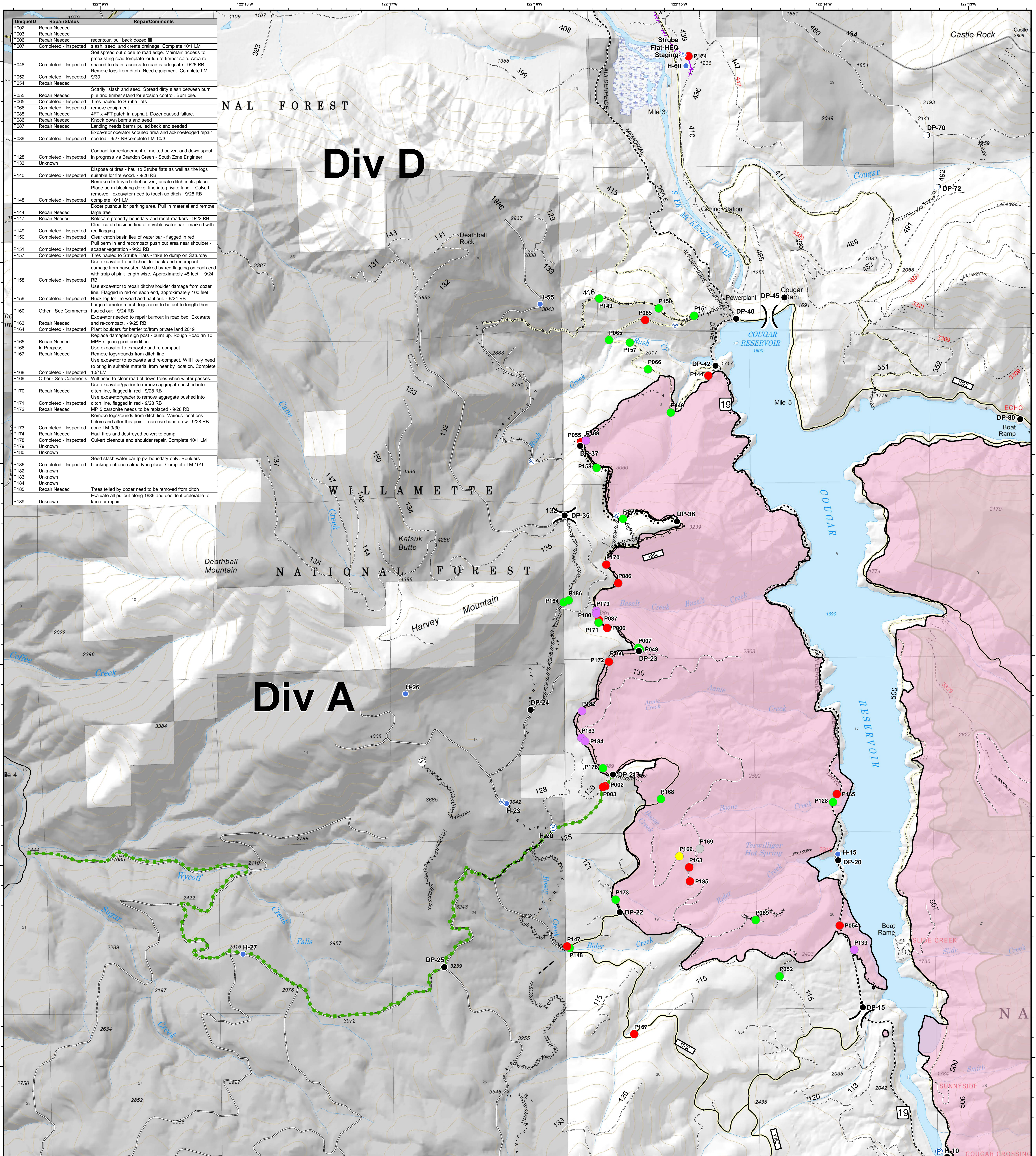


Div A/D - Point Repair Status



UniqueID	RepairStatus	RepairComments
P002	Repair Needed	
P003	Repair Needed	
P006	Repair Needed	recontour, pull back dozed fill
P007	Completed - Inspected	slash, seed, and create drainage. Complete 10/1 LM
P048	Completed - Inspected	Soil spread out close to road edge. Maintain access to preexisting road template for future timber sale. Area re-shaped to drain, access to road is adequate - 9/26 RB
P052	Completed - Inspected	Remove logs from ditch. Need equipment. Complete LM 9/30
P054	Repair Needed	
P055	Repair Needed	Scarify, slash and seed. Spread dry slash between burn pile and timber stand for erosion control. Burn pile.
P065	Completed - Inspected	Tires hauled to Strube flats
P066	Completed - Inspected	Remove equipment
P085	Repair Needed	4FT x 4FT patch in asphalt. Dozer caused failure.
P086	Repair Needed	Knock down berms and seed
P087	Repair Needed	Landing berms pulled back and seeded
P089	Completed - Inspected	Excavator operator scouted area and acknowledged repair needed - 9/27 RBcomplete LM 10/3
P128	Completed - Inspected	Contract for replacement of melted culvert and down spout in progress via Brandon Green - South Zone Engineer
P133	Unknown	
P140	Completed - Inspected	Dispose of tires - haul to Strube flats as well as the logs suitable for fire wood. - 9/26 RB
P148	Completed - Inspected	Remove destroyed relief culvert, create ditch in its place. Place berm blocking dozer line into private land - Culvert removed - excavator need to touch up ditch - 9/28 RB complete 10/1 LM
P144	Repair Needed	Dozer pushout for parking area. Pull in material and remove large tree
P147	Repair Needed	Relocate property boundary and reset markers - 9/22 RB
P149	Completed - Inspected	Clear catch basin in lieu of drivable water bar - marked with red flagging
P150	Completed - Inspected	Clear catch basin lieu of water bar - flagged in red
P151	Completed - Inspected	Pull berm in and recompact push out area near shoulder - scatter vegetation - 9/23 RB
P157	Completed - Inspected	Tires hauled to Strube Flats - take to dump on Saturday Use excavator to pull shoulder back and recompact damage from harvester. Marked by red flagging on each end with strip of pink length wise. Approximately 45 feet - 9/24 RB
P158	Completed - Inspected	Use excavator to repair ditch/shoulder damage from dozer line. Flagged in red on each end, approximately 100 feet. Buck log for fire wood and haul out. - 9/24 RB
P159	Completed - Inspected	Large diameter merch logs need to be cut to length then hauled out - 9/24 RB
P160	Other - See Comments	Excavator needed to repair burnout in road bed. Excavate and re-compact. - 9/25 RB
P163	Repair Needed	Plant boulders for barrier to/from private land 2019
P164	Completed - Inspected	Replace damaged sign post - burn up. Rough Road an 10 MPH sign in good condition
P165	Repair Needed	Use excavator to excavate and re-compact
P166	In Progress	
P167	Repair Needed	Remove logs/rounds from ditch line
P168	Completed - Inspected	Use excavator to excavate and re-compact. Will likely need to bring in suitable material from near by location. Complete 10/1LM
P169	Other - See Comments	Will need to clear road of down trees when winter passes.
P170	Repair Needed	Use excavator/grader to remove aggregate pushed into ditch line, flagged in red - 9/28 RB
P171	Completed - Inspected	Use excavator/grader to remove aggregate pushed into ditch line, flagged in red - 9/28 RB
P172	Repair Needed	MP 5 carsonite needs to be replaced - 9/28 RB
P173	Completed - Inspected	Remove logs/rounds from ditch line. Various locations before and after this point - can use hand crew - 9/28 RB done LM 9/30
P174	Repair Needed	Haul tires and destroyed culvert to dump
P178	Completed - Inspected	Culvert cleanout and shoulder repair. Complete 10/1 LM
P179	Unknown	
P180	Unknown	
P186	Completed - Inspected	Seed slash water bar tp pt boundary only. Boulders blocking entrance already in place. Complete LM 10/1
P182	Unknown	
P183	Unknown	
P184	Unknown	
P185	Repair Needed	Trees felled by dozer need to be removed from ditch
P189	Unknown	Evaluate all pullout along 1986 and decide if preferable to keep or repair

Terwilliger
OR-WIF-180227
 Fire perimeter as of
 09/27/2018, 2027 hrs
 11,445 acres

- | | | | |
|-------------------------|-------------------|--------------------------|------------------------|
| Repair Status | Drop Point | Water Tank | Completed Line |
| ● Completed - Inspected | ● Helispot | ⊕ Value at Risk | — Completed Dozer Line |
| ● In Progress | ⊕ Internet Access | ⊕ Division Break | — Completed Hand Line |
| ● Other - See Comments | ⊕ Pump | — Road as Completed Line | — Completed Burnout |
| ● Unknown | ⊕ Staging Area | — Planned Fire Line | — Escape Route |
| ● Repair Needed | ⊕ Water Source | — Powerlines | |

FOREST SERVICE
U.S. DEPARTMENT OF AGRICULTURE

SOUTHERN CASCADES
TYPE 3 INTERAGENCY IMT

0 0.25 0.5 1 Miles

NAD83 UTM10N

Updated:
 Oct 04, 2018
 @ 0836