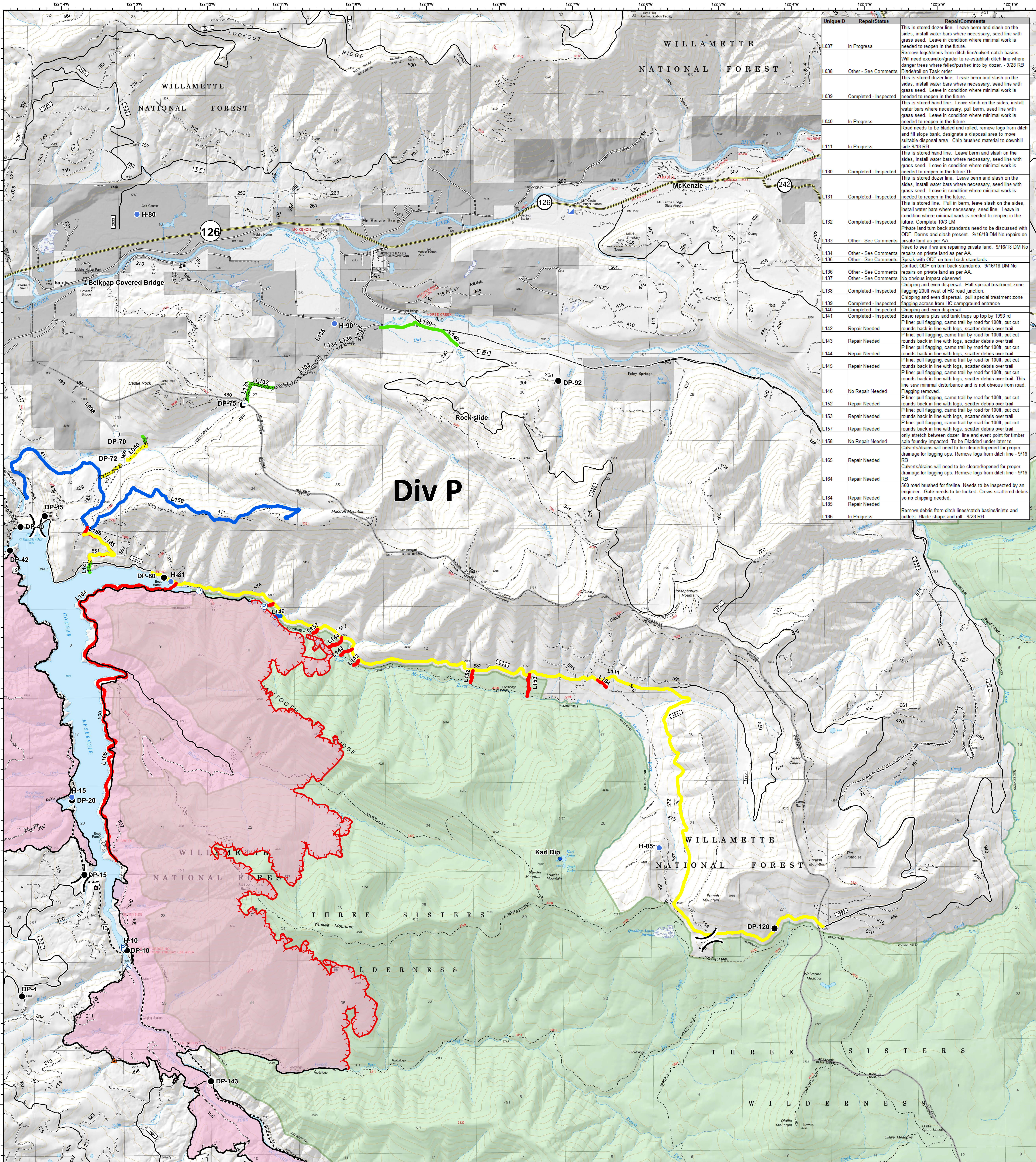


Div P - Line Repair Status



LineID	Repair Status	Repair Comments
L037	In Progress	This is stored dozer line. Leave berm and slash on the sides, install water bars where necessary, seed line with grass seed. Leave in condition where minimal work is needed to reopen in the future.
L038	Other - See Comments	Remove logs/debris from ditch/culvert catch basins. Will need excavator/grader to re-establish ditch line where danger trees where felled/pushed into by dozer - 9/28 RB Blade/roll on Task order.
L039	Completed - Inspected	This is stored dozer line. Leave berm and slash on the sides, install water bars where necessary, seed line with grass seed. Leave in condition where minimal work is needed to reopen in the future.
L040	In Progress	This is stored hand line. Leave slash on the sides, install water bars where necessary, pull berm, seed line with grass seed. Leave in condition where minimal work is needed to reopen in the future.
L111	In Progress	Road needs to be bladed and rolled, remove logs from ditch and slope bank, designate a disposal area to move suitable disposal area. Chip brushed material to downhill side 9/18 RB
L130	Completed - Inspected	This is stored dozer line. Leave berm and slash on the sides, install water bars where necessary, seed line with grass seed. Leave in condition where minimal work is needed to reopen in the future.
L131	Completed - Inspected	This is stored dozer line. Leave berm and slash on the sides, install water bars where necessary, seed line with grass seed. Leave in condition where minimal work is needed to reopen in the future.
L132	Completed - Inspected	This is stored hand line. Leave slash on the sides, install water bars where necessary, pull berm, seed line with grass seed. Leave in condition where minimal work is needed to reopen in the future. Complete 10/3 LM
L133	Other - See Comments	Private land turn back standards need to be discussed with ODF. Berms and slash present. 9/16/18 DM No repairs on private land as per AA.
L134	Other - See Comments	Need to see if we are repairing private land. 9/16/18 DM No repairs on private land as per AA.
L135	Other - See Comments	Speak with ODF on turn back standards.
L136	Other - See Comments	Contact ODF on turn back standards. 9/16/18 DM No repairs on private land as per AA.
L137	Other - See Comments	No obvious impact observed.
L138	Completed - Inspected	Chipping and even dispersal. Pull special treatment zone flagging across from HC campground entrance.
L139	Completed - Inspected	Chipping and even dispersal.
L140	Completed - Inspected	Chipping and even dispersal.
L141	Completed - Inspected	Basic repairs plus add tank traps up top by 1593 rd
L142	Repair Needed	P line: pull flagging, camo trail by road for 100ft, put cut rounds back in line with logs, scatter debris over trail.
L143	Repair Needed	P line: pull flagging, camo trail by road for 100ft, put cut rounds back in line with logs, scatter debris over trail.
L144	Repair Needed	P line: pull flagging, camo trail by road for 100ft, put cut rounds back in line with logs, scatter debris over trail.
L145	Repair Needed	P line: pull flagging, camo trail by road for 100ft, put cut rounds back in line with logs, scatter debris over trail.
L146	No Repair Needed	P line: pull flagging, camo trail by road for 100ft, put cut rounds back in line with logs, scatter debris over trail. This line saw minimal disturbance and is not obvious from road. Flagging removed.
L152	Repair Needed	P line: pull flagging, camo trail by road for 100ft, put cut rounds back in line with logs, scatter debris over trail.
L153	Repair Needed	P line: pull flagging, camo trail by road for 100ft, put cut rounds back in line with logs, scatter debris over trail.
L157	Repair Needed	P line: pull flagging, camo trail by road for 100ft, put cut rounds back in line with logs, scatter debris over trail.
L158	No Repair Needed	only stretch between dozer line and event point for timber saw foundry impacted. To be Bladed under later is. Culverts/drains will need to be cleared/opened for proper drainage for logging ops. Remove logs from ditch line - 9/16 RB
L165	Repair Needed	Culverts/drains will need to be cleared/opened for proper drainage for logging ops. Remove logs from ditch line - 9/16 RB
L164	Repair Needed	560 road brushed for fireline. Needs to be inspected by an engineer. Gate needs to be locked. Crews scattered debris so no chipping needed.
L184	Repair Needed	
L185	Repair Needed	
L186	In Progress	Remove debris from ditch lines/catch basins/inlets and outlets. Blade shape and roll - 9/28 RB

Terwilliger
OR-WIF-180227

Fire perimeter as of
09/27/2018, 2027 hrs
11,445 acres

Updated:
Oct 04, 2018
@ 0915

- | | | | | |
|------------------------------------|-------------------------|--------------------------|--------------------------|---------------------|
| Repair Status | ▲ Impassable Road | Ⓟ Pump | — Completed Line | ▒ Private Ownership |
| — Completed - Inspected | ✕ Closure | Ⓢ Water Source | ⊘ Completed Dozer Line | ▒ US Forest Service |
| — Completed - Ready for Inspection | ◆ Dip Site | Ⓣ Water Tank | ⋯ Completed Hand Line | ▒ Wilderness |
| — In Progress | ● Drop Point | Ⓤ Value at Risk | ⋯ Road as Completed Line | |
| — No Repair Needed | Ⓛ Helibase | | ⋯ Powerlines | |
| — Other - See Comments | Ⓜ Helispot |) Division Break | — State Highway | |
| — Unknown | Ⓜ Incident Command Post | — Uncontrolled Fire Edge | — Arterial Road | |
| — Repair Needed | | | — Collector Road | |
| | | | — Local Road | |

0 0.5 1 2 Miles

NAD83 UTM10N