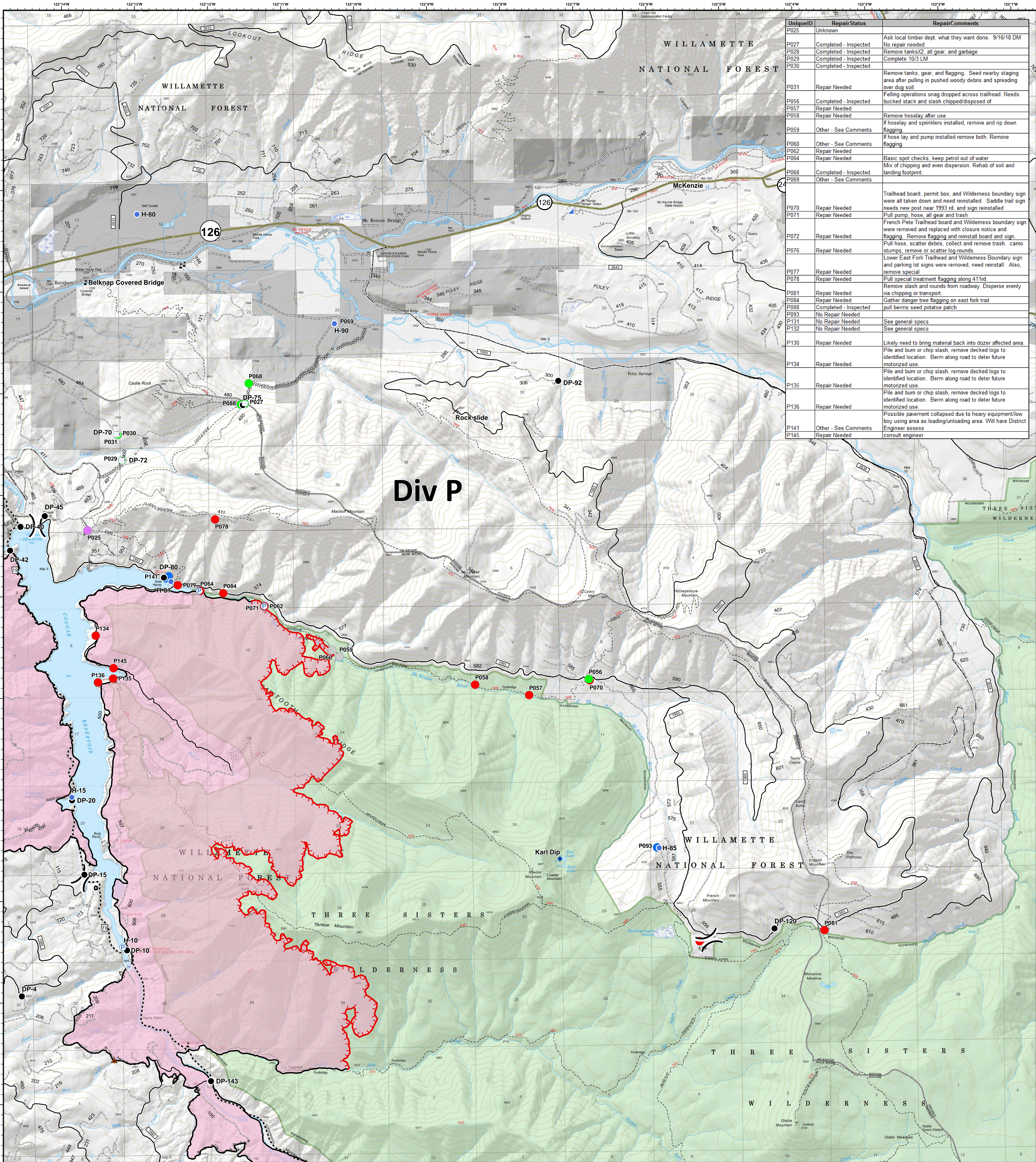


Div P - Point Repair Status



UniqueID	RepairStatus	RepairComments
P025	Unknown	
P027	Completed - Inspected	Ask local timber dept. what they want done. 9/16/18 DM
P028	Completed - Inspected	No repair needed
P029	Completed - Inspected	Remove tanksX2, all gear, and garbage
P030	Completed - Inspected	Complete 10/3 LM
P031	Repair Needed	Remove tanks, gear, and flagging. Seed nearby staging area after pulling in pushed woody debris and spreading over dug soil.
P056	Completed - Inspected	Flagging operations snag dropped across trailhead. Needs bucked stack and slash chipped/disposed of
P058	Repair Needed	Remove hose/lay after use
P059	Other - See Comments	If hose/lay and sprinklers installed, remove and rip down flagging
P060	Other - See Comments	If hose lay and pump installed remove both. Remove flagging
P062	Repair Needed	
P064	Repair Needed	Basic spot checks, keep petrol out of water
P068	Completed - Inspected	Mix of chipping and even dispersion. Rehab of soil and landing footprint.
P069	Other - See Comments	
P070	Repair Needed	Trailhead board, permit box, and Wilderness boundary sign were all taken down and need reinstalled. Saddle trail sign needs new post near 1993 rd. and sign reinstalled
P071	Repair Needed	Pull pump, hose, all gear and trash
P072	Repair Needed	French Pete Trailhead board and Wilderness boundary sign were removed and replaced with closure notice and flagging. Remove flagging and re-install board and sign
P076	Repair Needed	Pull hose, scatter debris, collect and remove trash, camo stumps, remove or scatter log rounds
P077	Repair Needed	Lower East Fork Trailhead and Wilderness Boundary sign and parking lot signs were removed, need re-install. Also, remove special
P078	Repair Needed	Pull special treatment flagging along 411rd.
P081	Repair Needed	Remove slash and rounds from roadway. Disperse evenly via chipping or transport
P084	Repair Needed	Gather danger tree flagging on east fork trail
P088	Completed - Inspected	Pull hose, scatter debris, collect and remove trash
P093	No Repair Needed	pull berms seed potatoe patch
P131	No Repair Needed	See general specs
P132	No Repair Needed	See general specs
P130	Repair Needed	Likely need to bring material back into dozer affected area.
P134	Repair Needed	Pile and burn or chip slash, remove decked logs to identified location. Berm along road to deter future motorized use.
P135	Repair Needed	Pile and burn or chip slash, remove decked logs to identified location. Berm along road to deter future motorized use.
P136	Repair Needed	Pile and burn or chip slash, remove decked logs to identified location. Berm along road to deter future motorized use.
P141	Other - See Comments	Possible pavement collapsed due to heavy equipment/low boy using area as loading/unloading area. Will have District Engineer assess
P145	Repair Needed	consult engineer

Terwilliger OR-WIF-180227

Fire perimeter as of
09/27/2018, 2027 hrs
11,445 acres

Updated:
Oct 04, 2018
@ 0920

- | | | | | |
|------------------------------------|-------------------------|------------------|----------------------------------|---------------------|
| Repair Status | ▲ Impassable Road | Ⓟ Pump | — Completed Line | ▨ Private Ownership |
| ● Completed - Inspected | ✕ Closure | Ⓢ Water Source | ⋯ Completed Dozer Line | ▨ US Forest Service |
| ● Completed - Ready for Inspection | ◆ Dip Site | Ⓣ Water Tank | - - - Completed Hand Line | ▨ Wilderness |
| ● In Progress | ● Drop Point | ⚠ Value at Risk | R - R - R Road as Completed Line | |
| ● No Repair Needed | Ⓜ Helibase |) Division Break | ⋯ Arterial Road | |
| ● Other - See Comments | Ⓜ Helispot | | ⋯ Collector Road | |
| ● Unknown | Ⓜ Incident Command Post | | ⋯ Local Road | |
| ● Repair Needed | | | ⋯ Powerlines | |
| | | | ⋯ State Highway | |

0 0.5 1 2 Miles

NAD83 UTM10N