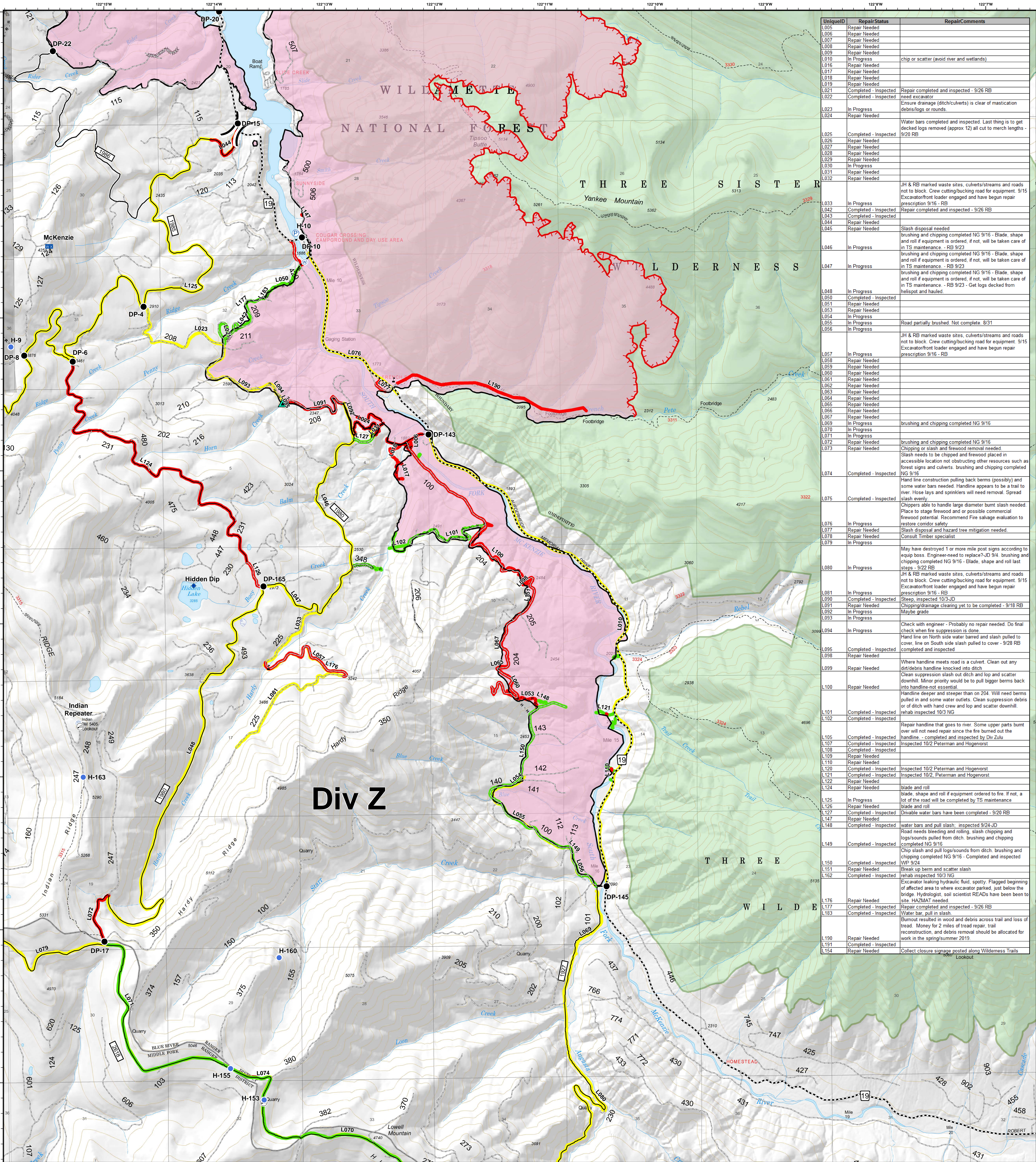


# Div Z - Line Repair Status



UniqueID	RepairStatus	RepairComments
L001	Repair Needed	
L005	Repair Needed	
L006	Repair Needed	
L007	Repair Needed	
L008	Repair Needed	
L009	Repair Needed	
L010	In Progress	chip or scatter (avoid river and wetlands)
L016	Repair Needed	
L017	Repair Needed	
L018	Repair Needed	
L019	Repair Needed	
L021	Completed - Inspected	Repair completed and inspected - 9/26 RB
L022	Completed - Inspected	need excavator
L023	In Progress	Ensure drainage (ditch/culverts) is clear of mastication debris/logs or rounds
L024	Repair Needed	
L025	Completed - Inspected	Water bars completed and inspected. Last thing is to get decked logs removed (approx 12) all cut to merch lengths - 9/20 RB
L026	Repair Needed	
L027	Repair Needed	
L028	Repair Needed	
L029	Repair Needed	
L030	In Progress	
L031	Repair Needed	
L032	Repair Needed	
L033	In Progress	JH & RB marked waste sites, culverts/streams and roads not to block. Crew cutting/bucking road for equipment. 9/15 Excavator/front loader engaged and have begun repair prescription 9/16 - RB
L042	Completed - Inspected	Repair completed and inspected - 9/26 RB
L043	Completed - Inspected	
L044	Repair Needed	
L045	Repair Needed	Slash disposal needed
L046	In Progress	brushing and chipping completed NG 9/16 - Blade, shape and roll if equipment is ordered, if not, will be taken care of in TS maintenance - RB 9/23
L047	In Progress	brushing and chipping completed NG 9/16 - Blade, shape and roll if equipment is ordered, if not, will be taken care of in TS maintenance - RB 9/23
L048	In Progress	brushing and chipping completed NG 9/16 - Blade, shape and roll if equipment is ordered, if not, will be taken care of in TS maintenance - RB 9/23 - Get logs decked from helispot and hauled.
L050	Completed - Inspected	
L051	Repair Needed	
L053	Repair Needed	
L054	In Progress	
L055	In Progress	Road partially brushed. Not complete. 8/31
L056	In Progress	JH & RB marked waste sites, culverts/streams and roads not to block. Crew cutting/bucking road for equipment. 9/15 Excavator/front loader engaged and have begun repair prescription 9/16 - RB
L057	In Progress	
L058	Repair Needed	
L059	Repair Needed	
L060	Repair Needed	
L061	Repair Needed	
L062	Repair Needed	
L063	Repair Needed	
L064	Repair Needed	
L065	Repair Needed	
L066	Repair Needed	
L067	Repair Needed	
L069	In Progress	brushing and chipping completed NG 9/16
L070	In Progress	
L071	In Progress	
L072	Repair Needed	brushing and chipping completed NG 9/16
L073	Repair Needed	Chipping or slash and firewood removal needed.
L074	Completed - Inspected	Slash needs to be chipped and firewood placed in accessible location not obstructing other resources such as forest signs and culverts. brushing and chipping completed NG 9/16
L075	Completed - Inspected	Hand line construction pulling back berms (possibly) and some water bars needed. Handline appears to be a trail to river. Hose lays and sprinklers will need removal. Spread slash evenly.
L076	In Progress	Chippers able to handle large diameter burnt slash evaluation. Place to stage firewood and/or possible commercial firewood potential. Recommend Fire salvage evaluation to restore corridor safety
L077	Repair Needed	Slash disposal and hazard tree mitigation needed.
L078	Repair Needed	Consult Timber specialist
L079	In Progress	May have destroyed 1 or more mile post signs according to equip boss. Engineer-need to replace 7-JD 9/4. brushing and chipping completed NG 9/16 - Blade, shape and roll last steps - 9/22 RB
L080	In Progress	JH & RB marked waste sites, culverts/streams and roads not to block. Crew cutting/bucking road for equipment. 9/15 Excavator/front loader engaged and have begun repair prescription 9/16 - RB
L081	In Progress	
L090	Completed - Inspected	Sleep, inspected 10/3-JD
L091	Repair Needed	Chipping/damage cleaning yet to be completed - 9/18 RB
L092	In Progress	Maybe grade
L093	In Progress	
L094	In Progress	Check with engineer - Probably no repair needed. Do final check when fire suppression is done
L095	Completed - Inspected	Hand line on north side water barred and slash pulled to cover, line on South side slash pulled to cover - 9/28 RB completed and inspected
L098	Repair Needed	
L099	Repair Needed	Where handline meets road is a culvert. Clean out any debris handline locked into ditch
L100	Repair Needed	Clean suppression slash out ditch and lop and scatter downhill. Minor priority would be to pull bigger berms back into handline-not essential
L101	Completed - Inspected	Handline deeper and steeper than on 204. Will need berms pulled in and some water outlets. Clean suppression debris or of ditch with hand crew and lop and scatter downhill, rehab inspected 10/3 NG
L102	Completed - Inspected	
L105	Completed - Inspected	Repair handline that goes to river. Some upper parts burnt over will not need repair since the fire burned out the handline. - completed and inspected by Div Zulu inspected 10/2 Peterman and Hogenvorst
L107	Completed - Inspected	
L108	Completed - Inspected	
L109	Repair Needed	
L110	Repair Needed	
L120	Completed - Inspected	inspected 10/2 Peterman and Hogenvorst
L121	Completed - Inspected	inspected 10/2 Peterman and Hogenvorst
L122	Repair Needed	
L124	Repair Needed	blade and roll
L125	In Progress	blade, shape and roll if equipment ordered to fire. If not, a lot of the road will be completed by TS maintenance
L126	Repair Needed	blade and roll
L127	Completed - Inspected	Drivable water bars have been completed - 9/20 RB
L147	Repair Needed	
L148	Completed - Inspected	water bars and pull slash; inspected 9/24-JD
L149	Completed - Inspected	Road needs bleeding and rolling, slash chipping and logs/sounds pulled from ditch. brushing and chipping completed NG 9/16
L150	Completed - Inspected	Chp slash and pull logs/sounds from ditch. brushing and chipping completed NG 9/16 - Completed and inspected
L151	Repair Needed	WP 9/24
L162	Completed - Inspected	Break up berm and scatter slash
L176	Repair Needed	Excavator leaking hydraulic fluid. spotty. Flagged beginning of affected area to where excavator parked, just below the bridge. Hydrologist, soil scientist READS have been to site. HAZMAT needed
L177	Completed - Inspected	Repair completed and inspected - 9/26 RB
L183	Completed - Inspected	Water bar, pull in slash
L190	Repair Needed	Emount resulted in wood and debris across trail and loss of tread. Money for 2 miles of tread repair, trail reconstruction, and debris removal should be allocated for work in the spring/summer 2019
L191	Completed - Inspected	
L154	Repair Needed	Collect closure signage posted along Wilderness Trails

**Terwilliger**  
OR-WIF-180227

Fire perimeter as of  
09/27/2018, 2027 hrs  
11,445 acres

Updated:  
Oct 04, 2018  
0921

- Completed - Inspected
- In Progress
- Repair Needed
- ▲ Impassable Road
- ◆ Dip Site
- Drop Point
- Helispot
- Internet Access
- Mobile Weather Unit
- P Pump
- ⊕ Repeater
- ⊗ Water Source
- ⊖ Value at Risk
- Uncontrolled Fire Edge
- Completed Line
- - - Completed Dozer Line
- Completed Hand Line
- - - Road as Completed Line
- Arterial Road
- Collector Road
- Local Road
- Private Ownership
- US Forest Service
- Wilderness
- ( ) Division Break

FOREST SERVICE  
U.S. DEPARTMENT OF AGRICULTURE

**SOUTHERN CASCADES**  
TYPE 3 INTERAGENCY IMT

N  
W E  
S

0 0.25 0.5 1 Miles

NAD83 UTM10N