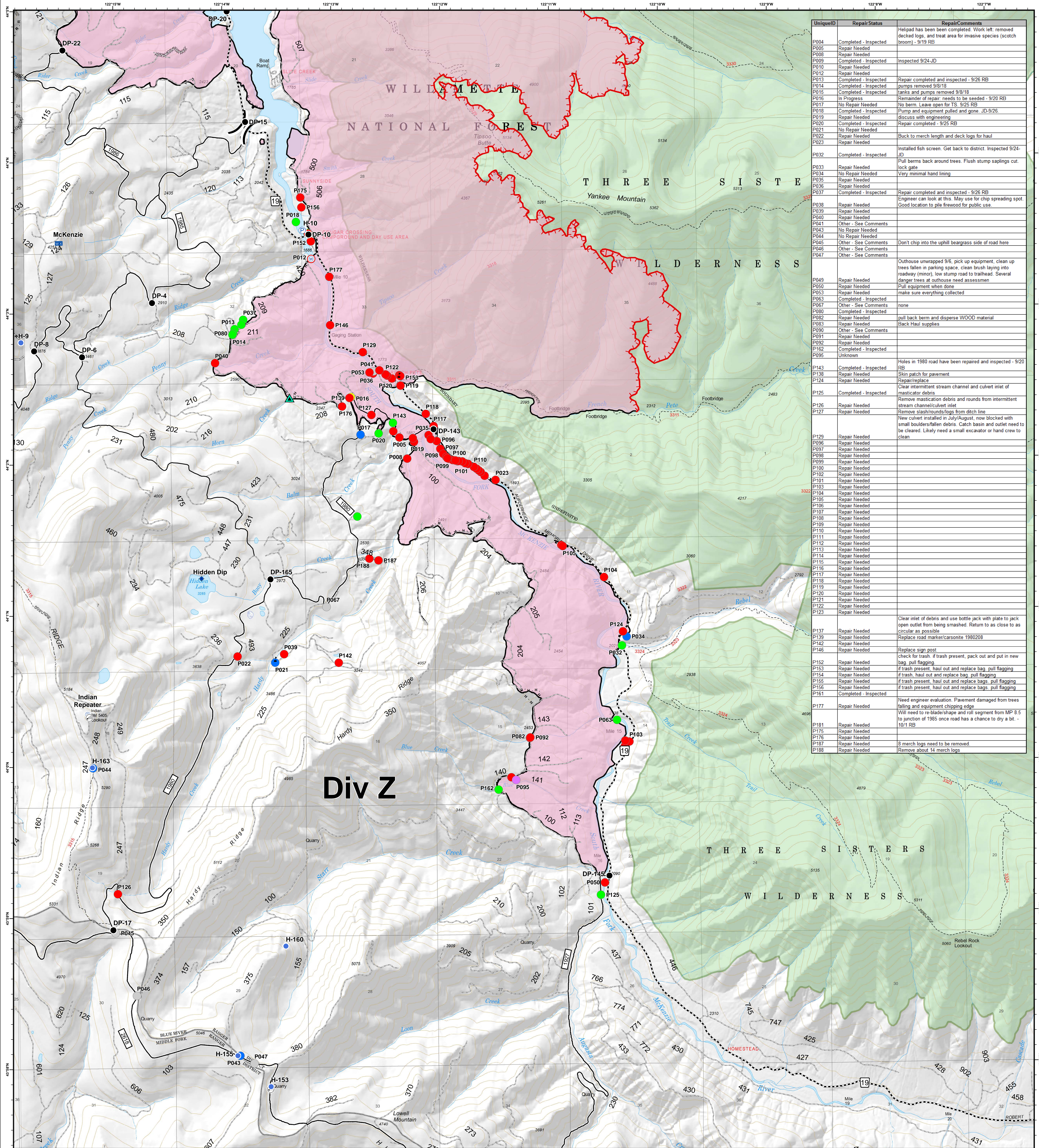


Div Z - Point Repair Status



UniqueID	RepairStatus	RepairComments
P004	Completed - Inspected	Helped has been completed. Work left: removed decked logs, and treat area for invasive species (scotch broom) - 9/19 RB
P005	Repair Needed	
P006	Completed - Inspected	Inspected 9/24-JD
P010	Repair Needed	
P012	Repair Needed	
P013	Completed - Inspected	Repair completed and inspected - 9/26 RB
P014	Completed - Inspected	pumps removed 9/8/18
P015	Completed - Inspected	tanks and pumps removed 9/8/18
P016	In Progress	Remainder of repair: needs to be seeded - 9/20 RB
P017	No Repair Needed	No berm. Leave open for TS. 9/25 RB
P018	Completed - Inspected	Pump and equipment pulled and gone. JD-9/26
P019	Repair Needed	discuss with engineering
P020	Completed - Inspected	Repair completed - 9/25 RB
P021	No Repair Needed	
P022	Repair Needed	Back to merch length and deck logs for haul
P023	Repair Needed	
P032	Completed - Inspected	Installed fish screen. Get back to district. Inspected 9/24-JD
P033	Repair Needed	Pull berms back around trees. Flush stump saplings cut lock gate
P034	No Repair Needed	Very minimal hand lining
P035	Repair Needed	
P036	Repair Needed	
P037	Completed - Inspected	Repair completed and inspected - 9/26 RB
P038	Repair Needed	Engineer can look at this. May use for chip spreading spot. Good location to pile firewood for public use.
P039	Repair Needed	
P040	Repair Needed	
P041	Other - See Comments	
P043	No Repair Needed	
P044	No Repair Needed	
P045	Other - See Comments	Don't chip into the uphill beargrass side of road here
P046	Other - See Comments	
P047	Other - See Comments	
P049	Repair Needed	Outhouse unwrapped 9/6, pick up equipment, clean up trees fallen in parking space, clean brush laying into roadway (minor), low stump road to trailhead. Several danger trees at outhouse need assessment
P050	Repair Needed	Pull equipment when done
P053	Repair Needed	make sure everything collected
P063	Completed - Inspected	
P067	Other - See Comments	none
P080	Completed - Inspected	
P082	Repair Needed	pull back berm and disperse WOOD material
P083	Repair Needed	Back Haul supplies
P090	Other - See Comments	
P091	Repair Needed	
P092	Repair Needed	
P122	Completed - Inspected	
P095	Unknown	
P143	Completed - Inspected	Holes in 1980 road have been repaired and inspected - 9/20 RB
P138	Repair Needed	Skid patch for pavement
P124	Repair Needed	Clear intermittent stream channel and culvert inlet of masticator debris
P125	Completed - Inspected	
P126	Repair Needed	Remove mastication debris and rounds from intermittent stream channel/culvert inlet
P127	Repair Needed	Remove slash/rounds/logs from ditch line
P129	Repair Needed	New culvert installed in July/August, now blocked with small boulders/fallen debris. Catch basin and outlet need to be cleared. Likely need a small excavator or hand crew to clean
P096	Repair Needed	
P097	Repair Needed	
P098	Repair Needed	
P099	Repair Needed	
P100	Repair Needed	
P102	Repair Needed	
P101	Repair Needed	
P103	Repair Needed	
P104	Repair Needed	
P105	Repair Needed	
P106	Repair Needed	
P107	Repair Needed	
P108	Repair Needed	
P109	Repair Needed	
P110	Repair Needed	
P111	Repair Needed	
P112	Repair Needed	
P113	Repair Needed	
P114	Repair Needed	
P115	Repair Needed	
P116	Repair Needed	
P117	Repair Needed	
P118	Repair Needed	
P119	Repair Needed	
P120	Repair Needed	
P121	Repair Needed	
P122	Repair Needed	
P123	Repair Needed	
P137	Repair Needed	Clear inlet of debris and use bottle jack with plate to jack open outlet from being smashed. Return to as close to as circular as possible
P139	Repair Needed	Replace road marker/carsonte 1980208
P142	Repair Needed	
P146	Repair Needed	Replace sign post
P152	Repair Needed	check for trash. if trash present, pack out and put in new bag, pull flagging
P153	Repair Needed	if trash present, haul out and replace bag, pull flagging
P154	Repair Needed	if trash, haul out and replace bag, pull flagging
P155	Repair Needed	if trash present, haul out and replace bags, pull flagging
P156	Repair Needed	if trash present, haul out and replace bags, pull flagging
P161	Completed - Inspected	
P177	Repair Needed	Need engineer evaluation. Pavement damaged from trees falling and equipment chipping edge
P181	Repair Needed	Will need to re-blade/shape and roll segment from MP 8.5 to junction of 1985 once road has a chance to dry a bit. - 10/1 RB
P175	Repair Needed	
P176	Repair Needed	
P178	Repair Needed	
P187	Repair Needed	8 merch logs need to be removed
P188	Repair Needed	Remove about 14 merch logs

Terwilliger
OR-WIF-180227

Fire perimeter as of
09/27/2018, 2027 hrs
11,445 acres

Updated:
Oct 04, 2018
@ 0925

- Repair Status**
- Completed - Inspected
 - In Progress
 - No Repair Needed
 - Other - See Comments
 - Unknown
 - Repair Needed
- Legend**
- ▲ Impassable Road
 - ◆ Dip Site
 - Drop Point
 - Helispot
 - Internet Access
 - Mobile Weather Unit
 - Pump
 - Repeater
 - Water Source
 - Value at Risk
 - Uncontrolled Fire Edge
 - Completed Line
 - Completed Dozer Line
 - Completed Hand Line
 - Road as Completed Line
 - Arterial Road
 - Collector Road
 - Local Road
 - Private Ownership
 - US Forest Service
 - Wilderness
 - Division Break

SOUTHERN CASCADES
TYPE 3 INTERAGENCY IMT

0 0.25 0.5 1 Miles

NAD83 UTM10N