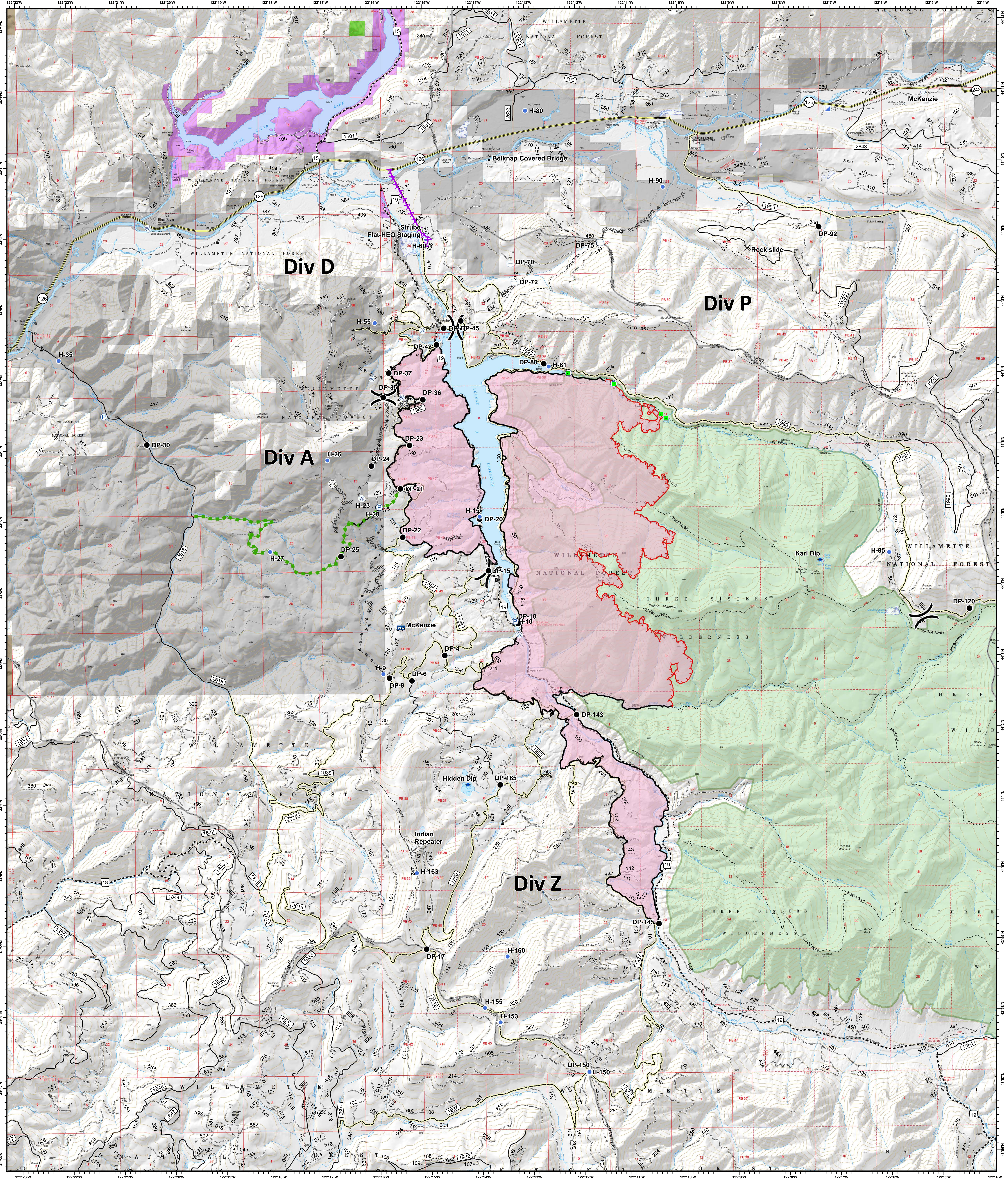


Briefing

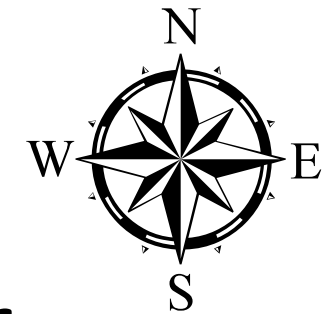


Terwilliger

OR-WIF-180227

10/5/2018

Fire perimeter as of
09/27/2018, 2027 hrs
11,445 acres



- | | | | | | |
|--|---|--|---|---|---|
| ■ Footbridges | ■ Incident Command Post | ● Water Source | Completed Dozer Line | — Powerlines | Oregon Department of Forestry |
| × Closure | Ⓜ Internet Access | ● Water Tank | Completed Hand Line | State Highway | Oregon Department of State Lands |
| + Dip Site | Ⓜ Mobile Weather Unit | Ⓜ Value at Risk | Road as Completed Line | Emphasized Routes | Private Industrial Ownership |
| ● Drop Point | Ⓜ Pump |) Division Break | Completed Burnout | Arterial Road | Private Ownership |
| Ⓜ Helibase | Ⓜ Repeater | Uncontrolled Fire Edge | Planned Fire Line | Collector Road | US Army Corps of Engineers |
| ● Helispot | Ⓜ Staging Area | Escape Route | Local Road | Local Road | US Forest Service |
| | | Completed Line | | | Wilderness |



SOUTHERN CASCADES
TYPE 3 INTERAGENCY IMT



0 0.5 1 2 Miles

NAD83 UTM10N