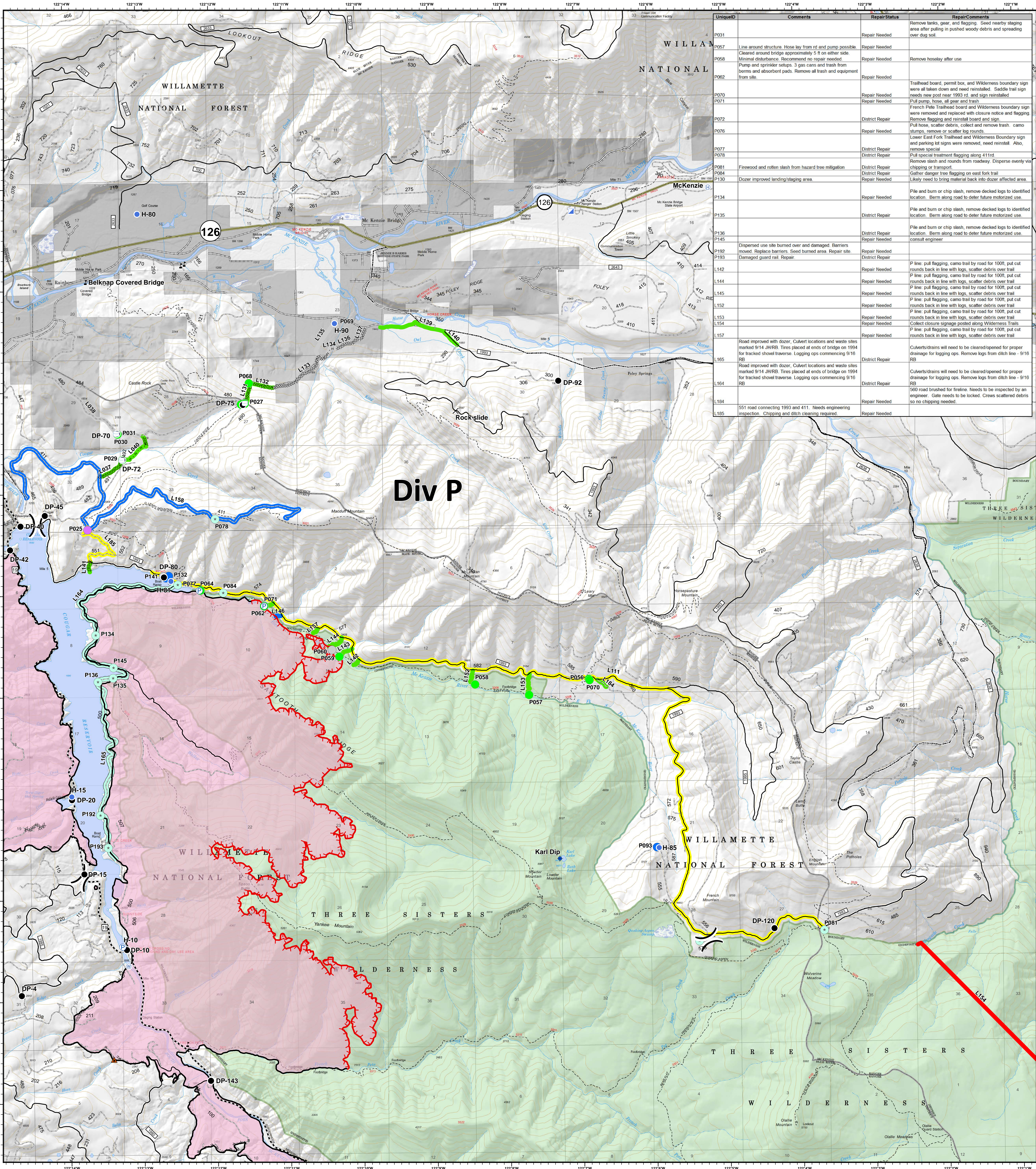


Div P - Repair Status




UniqueID	Comments	RepairStatus	RepairComments
P031		Repair Needed	Remove tanks, gear and flagging. Seed nearby staging area after pulling in pushed woody debris and spreading over dug soil.
P057	Line around structure. Hose lay from rd and pump possible.	Repair Needed	
P058	Cleared around bridge approximately 5 ft on either side. Minimal disturbance. Recommend no repair needed.	Repair Needed	Remove hoses after use.
P062	Pump and sprinkler setups. 3 gas cans and trash from berms and absorbent pads. Remove all trash and equipment from site.	Repair Needed	
P070		Repair Needed	Trailhead board, permit box, and Wilderness boundary sign were all taken down and need reinstalled. Saddle trail sign needs new post near 1993 rd and sign reinstalled.
P071		Repair Needed	Pull pump, hose, all gear and trash.
P072		District Repair	French Pole Trailhead board and Wilderness boundary sign were removed and replaced with closure notice and flagging. Remove flagging and reinstall board and sign.
P076		Repair Needed	Pull hose, scatter debris, collect and remove trash: camo stumps, remove or scatter log rounds.
P077		District Repair	Lower East Fork Trailhead and Wilderness Boundary sign and parking lot signs were removed, need reinstalled. Also, remove special.
P078		District Repair	Pull special treatment flagging along 411rd.
P081	Firewood and rotten slash from hazard tree mitigation.	District Repair	Remove slash and rounds from roadway. Disperse evenly via chipping or transport.
P084		District Repair	Collect danger tree flagging on east fork trail.
P130	Dozer improved landing/staging area.	Repair Needed	Likely need to bring material back into dozer affected area.
P134		Repair Needed	Pile and burn or chip slash, remove decked logs to identified location. Berm along road to deter future motorized use.
P135		District Repair	Pile and burn or chip slash, remove decked logs to identified location. Berm along road to deter future motorized use.
P136		District Repair	Pile and burn or chip slash, remove decked logs to identified location. Berm along road to deter future motorized use.
P138		District Repair	Pile and burn or chip slash, remove decked logs to identified location. Berm along road to deter future motorized use.
P145		Repair Needed	Dispersed use site burned over and damaged. Barriers moved. Replace barriers. Seed burned area. Repair site.
P192		Repair Needed	Damaged guard rail. Repair.
P193		District Repair	
L142		Repair Needed	P line: pull flagging, camo trail by road for 100ft, put cut rounds back in line with logs, scatter debris over trail.
L144		Repair Needed	P line: pull flagging, camo trail by road for 100ft, put cut rounds back in line with logs, scatter debris over trail.
L145		Repair Needed	P line: pull flagging, camo trail by road for 100ft, put cut rounds back in line with logs, scatter debris over trail.
L152		Repair Needed	P line: pull flagging, camo trail by road for 100ft, put cut rounds back in line with logs, scatter debris over trail.
L153		Repair Needed	P line: pull flagging, camo trail by road for 100ft, put cut rounds back in line with logs, scatter debris over trail.
L154		Repair Needed	Collect closure signage posted along Wilderness Trails.
L157		Repair Needed	P line: pull flagging, camo trail by road for 100ft, put cut rounds back in line with logs, scatter debris over trail.
L165	Road improved with dozer. Culvert locations and waste sites marked 9/14 JHRB. Tires placed at ends of bridge on 1994 for tracked shovel traverse. Logging ops commencing 9/16 RB.	District Repair	Culverts/drains will need to be cleared/opened for proper drainage for logging ops. Remove logs from ditch line - 9/16 RB.
L164	Road improved with dozer. Culvert locations and waste sites marked 9/14 JHRB. Tires placed at ends of bridge on 1994 for tracked shovel traverse. Logging ops commencing 9/16 RB.	District Repair	Culverts/drains will need to be cleared/opened for proper drainage for logging ops. Remove logs from ditch line - 9/16 RB.
L184	551 road connecting 1993 and 411. Needs engineering inspection. Chipping and ditch cleaning required.	Repair Needed	560 road brushed for fireline. Needs to be inspected by an engineer. Gate needs to be locked. Crews scattered debris so no chipping needed.
L185		Repair Needed	

Terwilliger
OR-WIF-180227

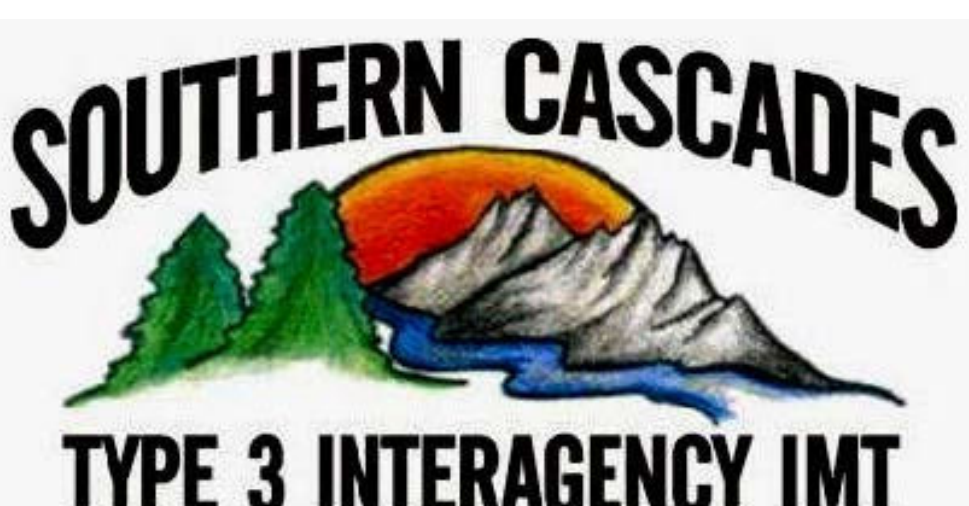
Fire perimeter as of
10/04/2018, 2227 hrs
11,555 acres

Updated:
Oct 09, 2018
@ 2241


- Repair Status**
- District Repair
 - Completed - Inspected
 - Repair Needed
 - No Repair Needed
 - Other - See Comments
 - Unknown
 - Completed - Inspected
 - In Progress
 - Repair Needed
 - No Repair Needed
 - Other - See Comments
- Other Symbols**
- ▲ Impassable Road
 - X Closure
 - + Dip Site
 - Drop Point
 - ⊕ Helibase
 - Helispot
 - ⬮ Incident Command Post
 - ⊕ Pump
 - ⊕ Water Source
 - ⊕ Water Tank
 - ⊕ Value at Risk
 -) Division Break
 - Uncontrolled Fire Edge
 - Completed Line
 - - - Completed Dozer Line
 - - - Completed Hand Line
 - - - Road as Completed Line
 - - - Arterial Road
 - - - Collector Road
 - - - Local Road
 - - - State Highway
 - Private Ownership
 - US Forest Service




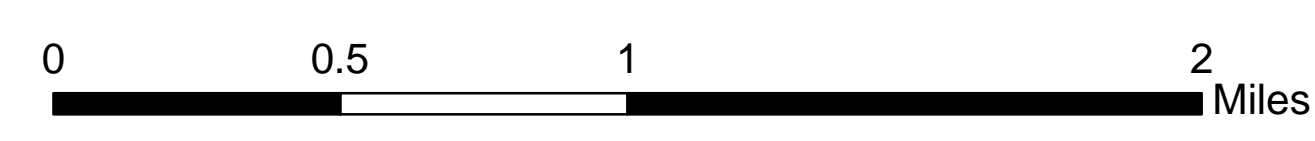
FOREST SERVICE
U.S. DEPARTMENT OF AGRICULTURE



SOUTHERN CASCADES
TYPE 3 INTERAGENCY IMT







0 0.5 1 2 Miles

NAD83 UTM10N