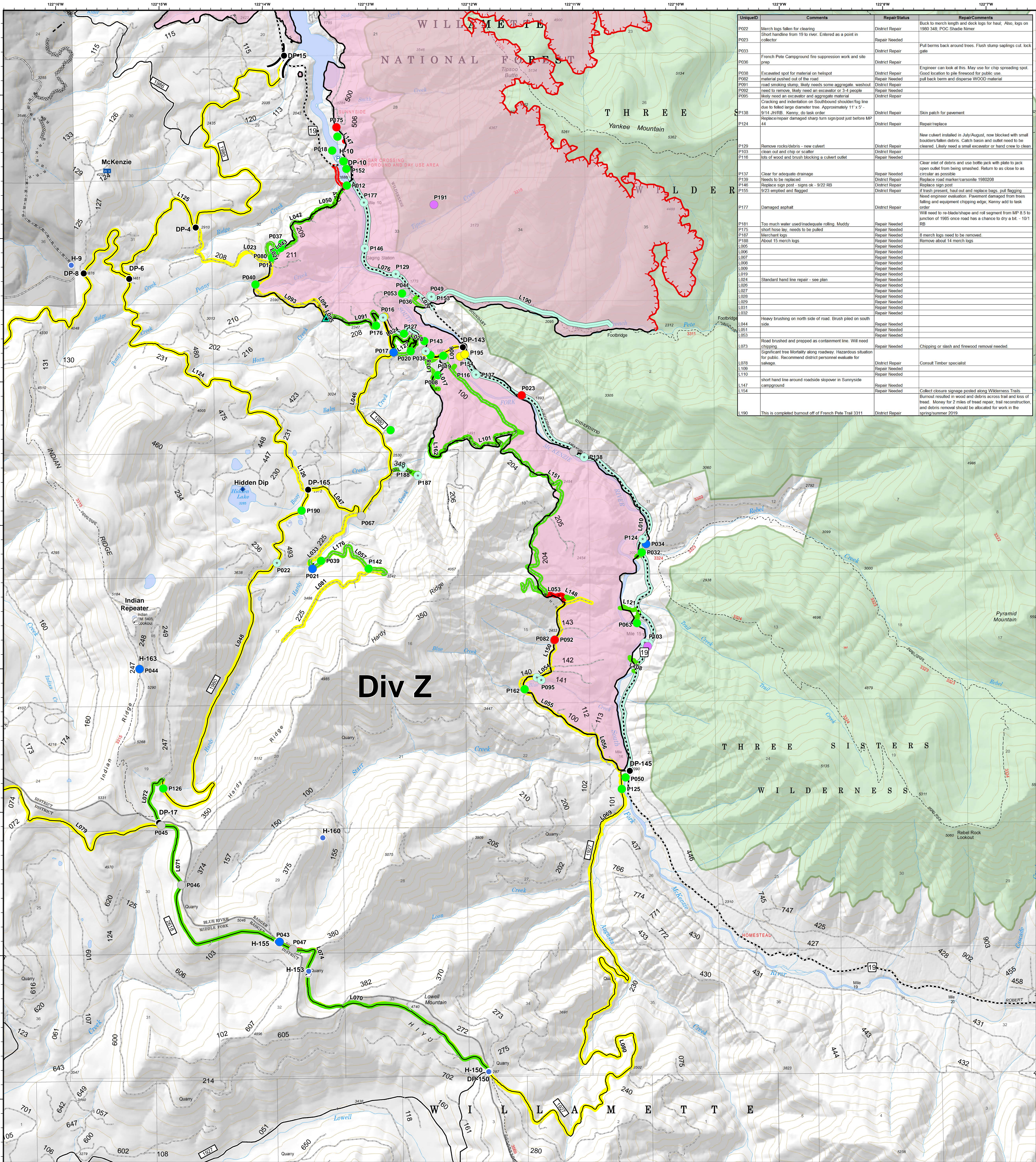


# Div Z - Repair Status



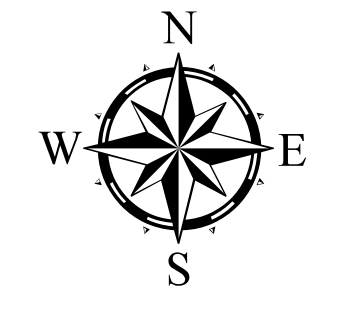
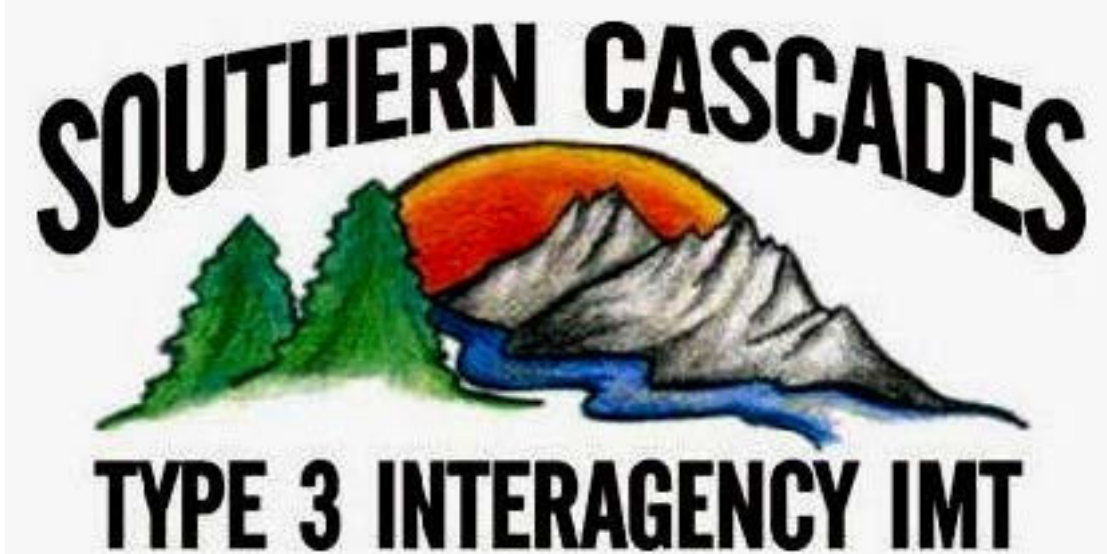
UniqueID	Comments	Repair Status	RepairComments
P022	Merch logs fallen for clearing	District Repair	Back to merch length and dock logs for haul. Also, logs on 1980 348. POC Shadie Nimer
P023	Short handline from 19 to river. Entered as a point in collector	Repair Needed	
P036	French Pete Campground fire suppression work and site prep	District Repair	
P038	Excavated spot for material on helispot	District Repair	Engineer can look at this. May use for chip spreading spot. Good location to pile firewood for public use
P092	material pushed out of the road	District Repair	pull back berm and disperse WOOD material
P091	road smoking stump. likely needs some aggregate washout	Repair Needed	
P092	likely need an excavator and aggregate material	District Repair	
P095	Cracking and indentation on Southbound shoulder/fog line due to failed large diameter tree. Approximately 11' x 5' - 9'14 JH RB. Kenny, do task order	District Repair	Skin patch for pavement
P138	Replace repaired damaged sharp turn sign post just before MP 44	District Repair	Repair/replace
P124		District Repair	New culvert installed in July/August, now blocked with small loadiers/fallen debris. Catch basin and outlet need to be cleared. Likely need a small excavator or hand crew to clean
P129	Remove rocks/debris - new culvert	District Repair	
P103	clean out and chip or scatter	District Repair	
P116	lots of wood and brush blocking a culvert outlet	Repair Needed	
P137	Clear for adequate drainage	Repair Needed	Clear inlet of debris and use bottle jack with plate to jack open outlet from being smashed. Return to as close to as circular as possible
P139	Needs to be replaced	District Repair	Replace road marker/carsonne 1980208
P146	Replace sign post - signs ok - 9/22 RB	District Repair	Replace sign post
P155	9/23 emptied and flagged	District Repair	if brush present, haul out and replace bags, put flagging. Need engineer evaluation. Pavement damaged from trees falling and equipment chipping edge, Kenny add to task order
P177	Damaged asphalt	District Repair	Will need to re-landscape and roll segment from MP 8.5 to junction of 1985 once road has a chance to dry a bit - 10/1 RB
P181	Too much water used/inadequate rolling. Muddy	Repair Needed	
P175	short hose lay, needs to be pulled	Repair Needed	
P187	Merch logs	Repair Needed	8 merch logs need to be removed
P188	About 15 merch logs	Repair Needed	Remove about 14 merch logs
L005		Repair Needed	
L006		Repair Needed	
L007		Repair Needed	
L008		Repair Needed	
L009		Repair Needed	
L019		Repair Needed	
L024	Standard hand line repair - see plan	Repair Needed	
L026		Repair Needed	
L027		Repair Needed	
L028		Repair Needed	
L029		Repair Needed	
L031		Repair Needed	
L032		Repair Needed	
L044	Heavy brushing on north side of road. Brush piled on south side	Repair Needed	
L051		Repair Needed	
L053		Repair Needed	
L073	Road brushed and prepped as containment line. Will need chipping	Repair Needed	Chipping or slash and firewood removal needed
L078	Significant tree mortality along roadway. Hazardous situation for public. Recommend district personnel evaluate for salvage.	District Repair	Consult Timber specialist
L108		District Repair	
L110		Repair Needed	
L147	short hand line around roadside slopeover in Sunnyside campground	Repair Needed	
L154		Repair Needed	
L190	This is completely burnt out of French Pete Trail 3311	District Repair	Collect closure signage posted along Wilderness Trails. Burnout resulted in wood and debris across trail and loss of tread. Money for 2 miles of tread repair, trail reconstruction, and debris removal should be allocated for work in the spring/summer 2019

## Terwilliger OR-WIF-180227

Fire perimeter as of 10/04/2018, 2227 hrs  
11,555 acres

Updated: Oct 09, 2018 @ 2245

- |                       |                     |                |                        |                        |
|-----------------------|---------------------|----------------|------------------------|------------------------|
| <b>Repair Status</b>  | Impassable Road     | Repeater       | Uncontrolled Fire Edge | Completed Hand Line    |
| District Repair       | Dip Site            | Water Source   | Completed Line         | Road as Completed Line |
| Completed - Inspected | Drop Point          | Value at Risk  | Completed Dozer Line   | Planned Fire Line      |
| In Progress           | Helispot            | Division Break |                        | Arterial Road          |
| Repair Needed         | Internet Access     |                |                        | Collector Road         |
| No Repair Needed      | Mobile Weather Unit |                |                        | Local Road             |
| Other - See Comments  | Pump                |                |                        | Private Ownership      |
| Unknown               |                     |                |                        | US Forest Service      |
| Completed - Inspected |                     |                |                        | Wilderness             |
| District Repair       |                     |                |                        |                        |
| In Progress           |                     |                |                        |                        |
| Repair Needed         |                     |                |                        |                        |



0 0.25 0.5 1 Miles

NAD83 UTM10N