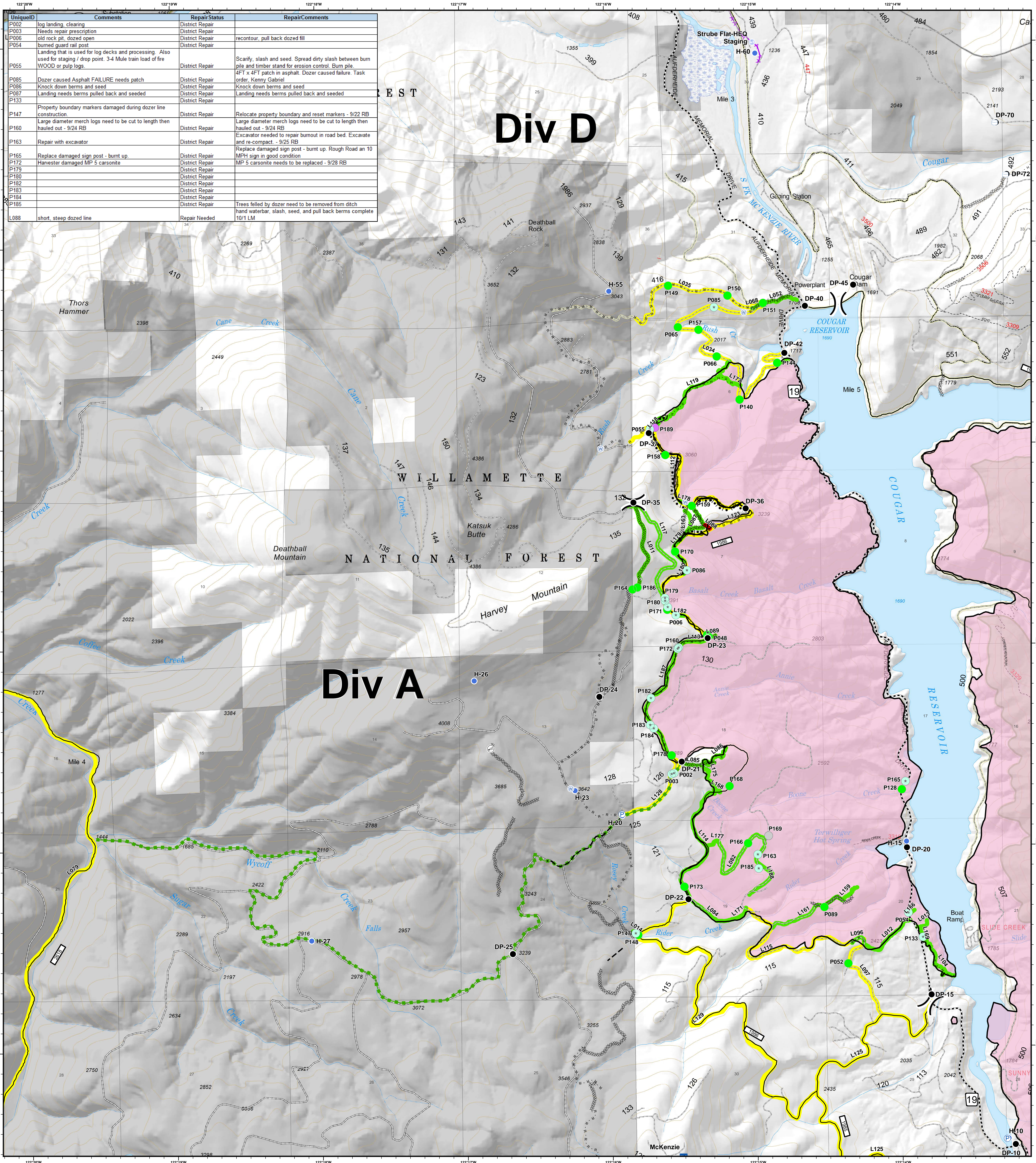


Div A/D - Repair Status



UniqueID	Comments	Repair Status	RepairComments
P002	log landing, clearing	District Repair	
P003	Needs repair prescription	District Repair	
P006	old rock pit, dozed open	District Repair	recontour, pull back dozed fill
P054	burned guard rail post	District Repair	
P055	Landing that is used for log decks and processing. Also used for staging / drop point. 3-4 Mule train load of fire WOOD or pulp logs.	District Repair	Scarify, slash and seed. Spread dirty slash between burn pile and timber stand for erosion control. Burn pile. 4FT x 4FT patch in asphalt. Dozer caused failure. Task order, Kenny Gabriel
P085	Dozer caused Asphalt FAILURE needs patch	District Repair	Knock down berms and seed
P086	Knock down berms and seed	District Repair	Knock down berms and seed
P087	Landing needs berms pulled back and seeded	District Repair	Landing needs berms pulled back and seeded
P133		District Repair	
P147	Property boundary markers damaged during dozer line construction.	District Repair	Relocate property boundary and reset markers - 9/22 RB
P160	Large diameter merch logs need to be cut to length then hauled out - 9/24 RB	District Repair	Large diameter merch logs need to be cut to length then hauled out - 9/24 RB
P163	Repair with excavator	District Repair	Excavator needed to repair burnout in road bed. Excavate and re-compact - 9/25 RB
P165	Replace damaged sign post - burnt up.	District Repair	Replace damaged sign post - burnt up. Rough Road an 10 MPH sign in good condition
P172	Harvester damaged MP 5 carsonite	District Repair	MP 5 carsonite needs to be replaced - 9/28 RB
P179		District Repair	
P180		District Repair	
P182		District Repair	
P183		District Repair	
P184		District Repair	
P185		District Repair	
L088	short, steep dozed line	Repair Needed	Trees felled by dozer need to be removed from ditch hand waterbar, slash, seed, and pull back berms complete 10/1 LM

Terwilliger OR-WIF-180227

Fire perimeter as of 10/04/2018, 2227 hrs
11,555 acres

Updated: Oct 10, 2018 @ 2216

Repair Status <ul style="list-style-type: none"> ● District Repair ● Completed - Inspected ● Other - See Comments ● Unknown — Repair Needed — Completed - Inspected — In Progress — Other - See Comments 	<ul style="list-style-type: none"> ● Drop Point ● Helispot ● Internet Access ● Mobile Weather Unit ● Pump ● Staging Area 	<ul style="list-style-type: none"> ● Water Source ● Water Tank ● Value at Risk 	<ul style="list-style-type: none"> — Completed Line — Completed Dozer Line — Completed Hand Line — Road as Completed Line — Completed Burnout — Planned Fire Line — Escape Route — Powerlines 	<ul style="list-style-type: none"> — State Highway — Arterial Road — Collector Road — Local Road — Private Ownership — US Forest Service — Wilderness
--	--	---	---	--

SOUTHERN CASCADES

TYPE 3 INTERAGENCY IMT

