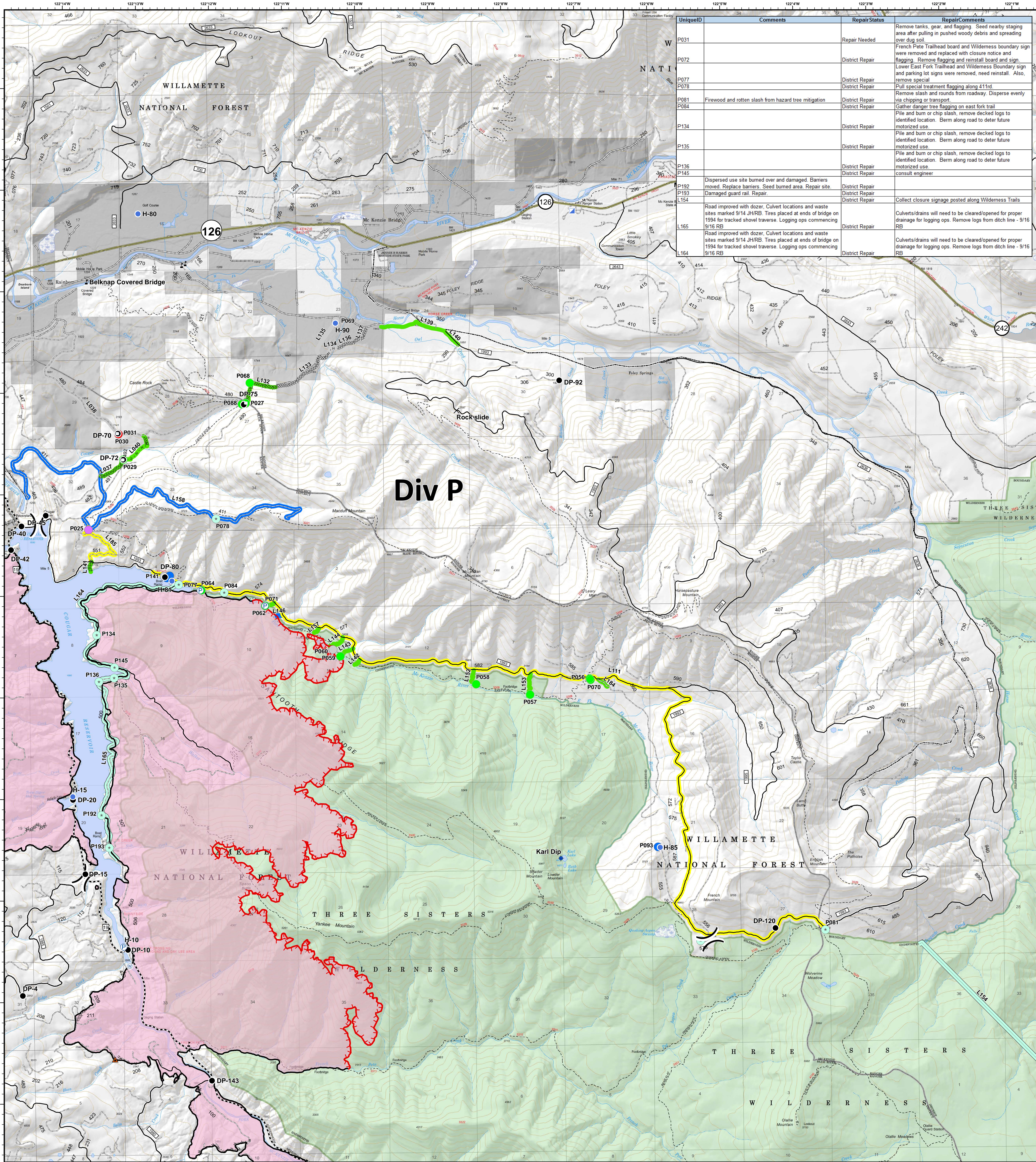


Div P - Repair Status



UniqueID	Comments	RepairStatus	RepairComments
P031		Repair Needed	Remove tanks, gear, and flagging. Seed nearby staging area after pulling in pushed woody debris and spreading over dug soil.
P072		District Repair	French Pate Trailhead board and Wilderness boundary sign were removed and replaced with closure notice and flagging. Remove flagging and reinstall board and sign.
P077		District Repair	Lower East Fork Trailhead and Wilderness Boundary sign and parking lot signs were removed, need reinstall. Also, remove special.
P078		District Repair	Pull special treatment flagging along 411 rd.
P081	Firewood and rotten slash from hazard tree mitigation	District Repair	Remove slash and rounds from roadway. Disperse evenly via chipping or transport.
P084		District Repair	Gather danger tree flagging on east fork trail.
P134		District Repair	Pile and burn or chip slash, remove decked logs to identified location. Berm along road to deter future motorized use.
P135		District Repair	Pile and burn or chip slash, remove decked logs to identified location. Berm along road to deter future motorized use.
P136		District Repair	Pile and burn or chip slash, remove decked logs to identified location. Berm along road to deter future motorized use.
P145	Dispersed use site burned over and damaged. Barriers moved. Replace barriers. Seed burned area. Repair site.	District Repair	consult engineer
P192	Damaged guard rail. Repair.	District Repair	
P193		District Repair	Collect closure signage posted along Wilderness Trails
L154		District Repair	
L165	Road improved with dozer. Culvert locations and waste sites marked 9/14 JH/RB. Tires placed at ends of bridge on 1994 for tracked shovel traverse. Logging ops commencing 9/16 RB	District Repair	Culverts/drains will need to be cleared/opened for proper drainage for logging ops. Remove logs from ditch line - 9/16 RB
L164	Road improved with dozer. Culvert locations and waste sites marked 9/14 JH/RB. Tires placed at ends of bridge on 1994 for tracked shovel traverse. Logging ops commencing 9/16 RB	District Repair	Culverts/drains will need to be cleared/opened for proper drainage for logging ops. Remove logs from ditch line - 9/16 RB

Terwilliger OR-WIF-180227

Fire perimeter as of
10/04/2018, 2227 hrs
11,555 acres

Updated:
Oct 10, 2018
@ 2219

- | | | | | |
|-----------------------|-----------------------|------------------------|-------------------|------------------------|
| Repair Status | Completed - Inspected | Impassable Road | Pump | Completed Line |
| Repair Needed | District Repair | Closure | Water Source | Completed Dozer Line |
| District Repair | In Progress | Dip Site | Water Tank | Completed Hand Line |
| Completed - Inspected | No Repair Needed | Drop Point | Value at Risk | Road as Completed Line |
| No Repair Needed | Other - See Comments | Helibase | Arterial Road | Collector Road |
| Other - See Comments | | Helispot | Local Road | State Highway |
| Unknown | | Incident Command Post | Private Ownership | US Forest Service |
| | | Uncontrolled Fire Edge | Division Break | |

0 0.5 1 2 Miles

NAD83 UTM10N