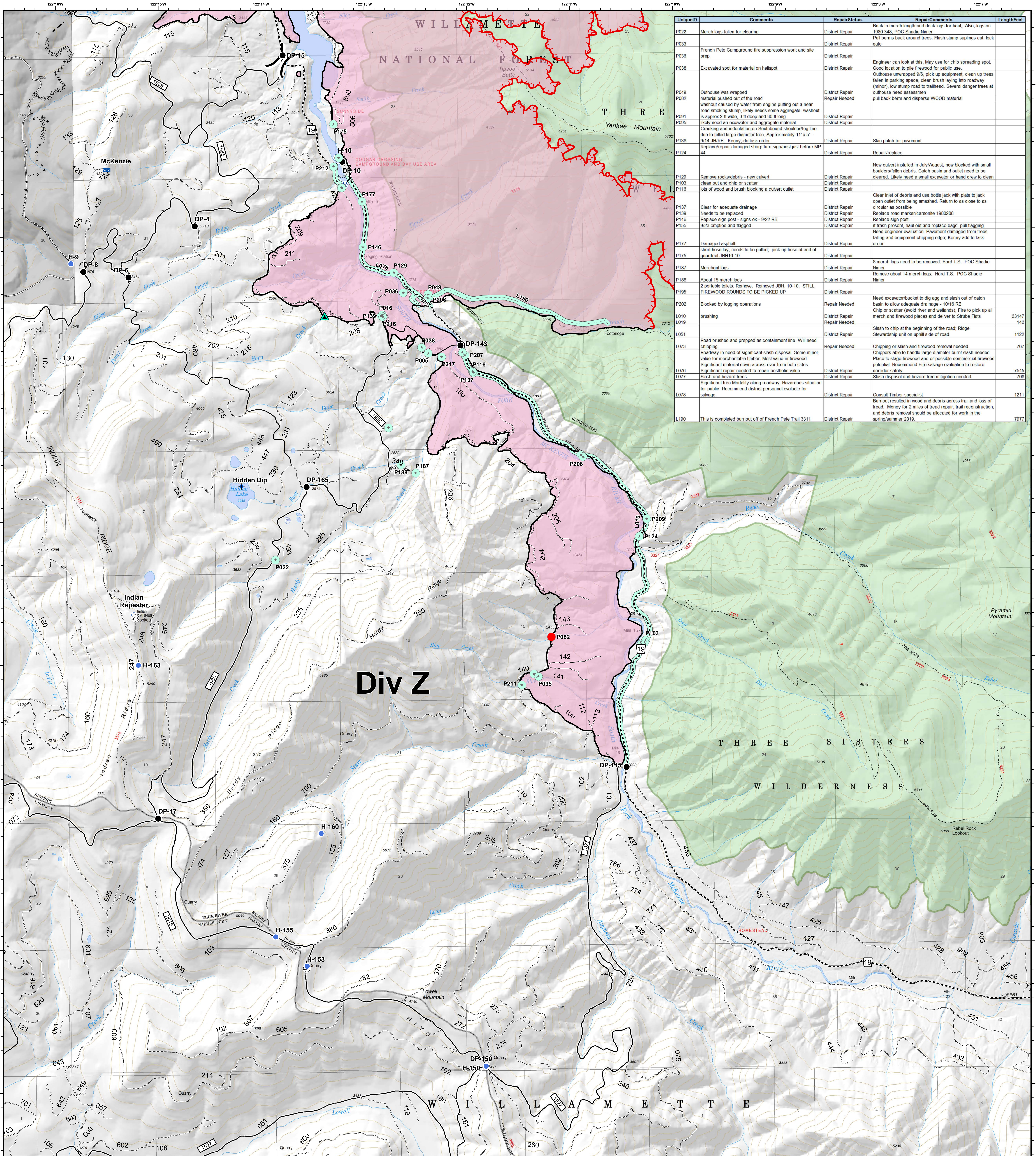


# Div Z - Repair Needed



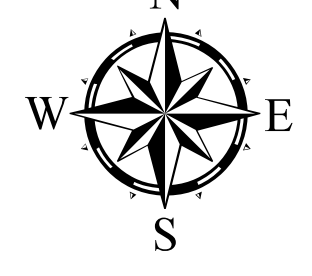
UniqueID	Comments	RepairStatus	RepairComments	LengthFeet
P022	Merch logs fallen for clearing	District Repair	Back to merch length and deck logs for haul. Also, logs on 1980 348, POC Shade Nimer	
P033		District Repair	Pull berms back around trees. Flush stump saplings cut, lock gate	
P036	French Pete Campground fire suppression work and site prep	District Repair		
P038	Excavated spot for material on helispot	District Repair	Engineer can look at this. May use for chip spreading spot. Good location to pile firewood for public use.	
P049	Outhouse was wrapped	District Repair	Outhouse unwrapped 9/6, pick up equipment, clean up trees fallen in parking space, clean brush laying into roadway (minor), low stump road to trailhead. Several danger trees at outhouse need assessment	
P082	material pushed out of the road	Repair Needed	pull back berm and disperse WOOD material	
P091	washout caused by water from engine putting out a near road smoking stump, likely needs some aggregate washout is approx 2 ft wide, 3 ft deep and 30 ft long	District Repair		
P095	likely need an excavator and aggregate material	District Repair		
P138	Cracking and indentation on Southbound shoulder/fog line due to felled large diameter tree. Approximately 11' x 5' - 8' x 14' JHRB. Kenny, do task order	District Repair	Skin patch for pavement	
P124	Replace/repair damaged sharp turn sign/post just before MP 44	District Repair	Repair/replace	
P129	Remove rocks/debris - new culvert	District Repair	New culvert installed in July/August, now blocked with small boulders/fallen debris. Catch basin and outlet need to be cleared. Likely need a small excavator or hand crew to clean	
P103	clean out and chip or scatter	District Repair		
P116	lots of wood and brush blocking a culvert outlet	District Repair	Clear mix of debris and use bottle jack with plate to jack open outlet from being smashed. Return to as close to as circular as possible	
P137	Clear for adequate drainage	District Repair	Replace road marker/corsonite 1980/208	
P139	Needs to be replaced	District Repair	Replace sign post	
P146	Replace sign post - signs ok - 9/22 RB	District Repair	Replace sign post	
P155	9/23 emptied and flagged	District Repair	If trash present, haul out and replace bags, pull flagging	
P177	Damaged asphalt	District Repair	Need engineer evaluation. Pavement damaged from trees falling and equipment chipping edge, Kenny add to task order	
P175	short hose lay, needs to be pulled, pick up hose at end of guardrail JH10-10	District Repair		
P187	Merchant logs	District Repair	8 merch logs need to be removed. Hard T.S. POC Shade Nimer	
P188	About 15 merch logs	District Repair	Remove about 14 merch logs, Hard T.S. POC Shade Nimer	
P195	2 portable toilets. Remove. Removed JH, 10-10. STILL FIREWOOD ROUNDS TO BE PICKED UP	District Repair		
P202	Blocked by logging operations	Repair Needed	Need excavator/bucket to dig egg and slash out of catch basin to allow adequate drainage - 10/16 RB	
L010	brushing	District Repair	Chip or scatter (avoid river and wetlands); Fire to pick up all merch and firewood pieces and deliver to Strube Flats	23147
L019		Repair Needed		142
L051		District Repair	Slash to chip at the beginning of the road; Ridge Stewardship unit on uphill side of road.	1122
L073	Road brushed and prepped as containment line. Will need chipping	Repair Needed	Chipping or slash and firewood removal needed	767
L076	Roadway in need of significant slash disposal. Some minor value for merchantable timber. Most value in firewood. Significant material down across river from both sides. Significant repair needed to repair aesthetic value	District Repair	Chippers able to handle large diameter burnt slash needed. Place to stage firewood and/or possible commercial firewood potential. Recommend Fire salvage evaluation to restore corridor safety	7545
L077	Slash and hazard trees	District Repair	Slash disposal and hazard tree mitigation needed.	708
L078	Significant tree Mortality along roadway. Hazardous situation for public. Recommend district personnel evaluate for salvage.	District Repair	Consult Timber specialist	1211
L190	This is completed burnout off of French Pete Trail 3311	District Repair	Burnout resulted in wood and debris across trail and loss of tread. Money for 2 miles of tread repair, trail reconstruction, and debris removal should be allocated for work in the spring/summer 2019	7977

## Terwilliger OR-WIF-180227

Fire perimeter as of  
10/09/2018, 2354 hrs  
11,555 acres

Updated:  
Oct 22, 2018  
@ 2103

- Repair Needed
  - District Repair
  - District Repair
- ▲ Impassable Road
  - ◆ Dip Site
  - Drop Point
  - Helispot
  - Ⓜ Internet Access
  - Ⓜ Mobile Weather Unit
  - Ⓜ Pump
- Ⓜ Repeater
  - Ⓜ Water Source
  - Ⓜ Value at Risk
- Uncontrolled Fire Edge
  - Completed Line
  - Completed Dozer Line
  - Completed Hand Line
  - Road as Completed Line
  - Planned Fire Line
- Arterial Road
  - Collector Road
  - Local Road
  - Private Ownership
  - US Forest Service
  - Wilderness



0 0.25 0.5 1 Miles

NAD83 UTM10N