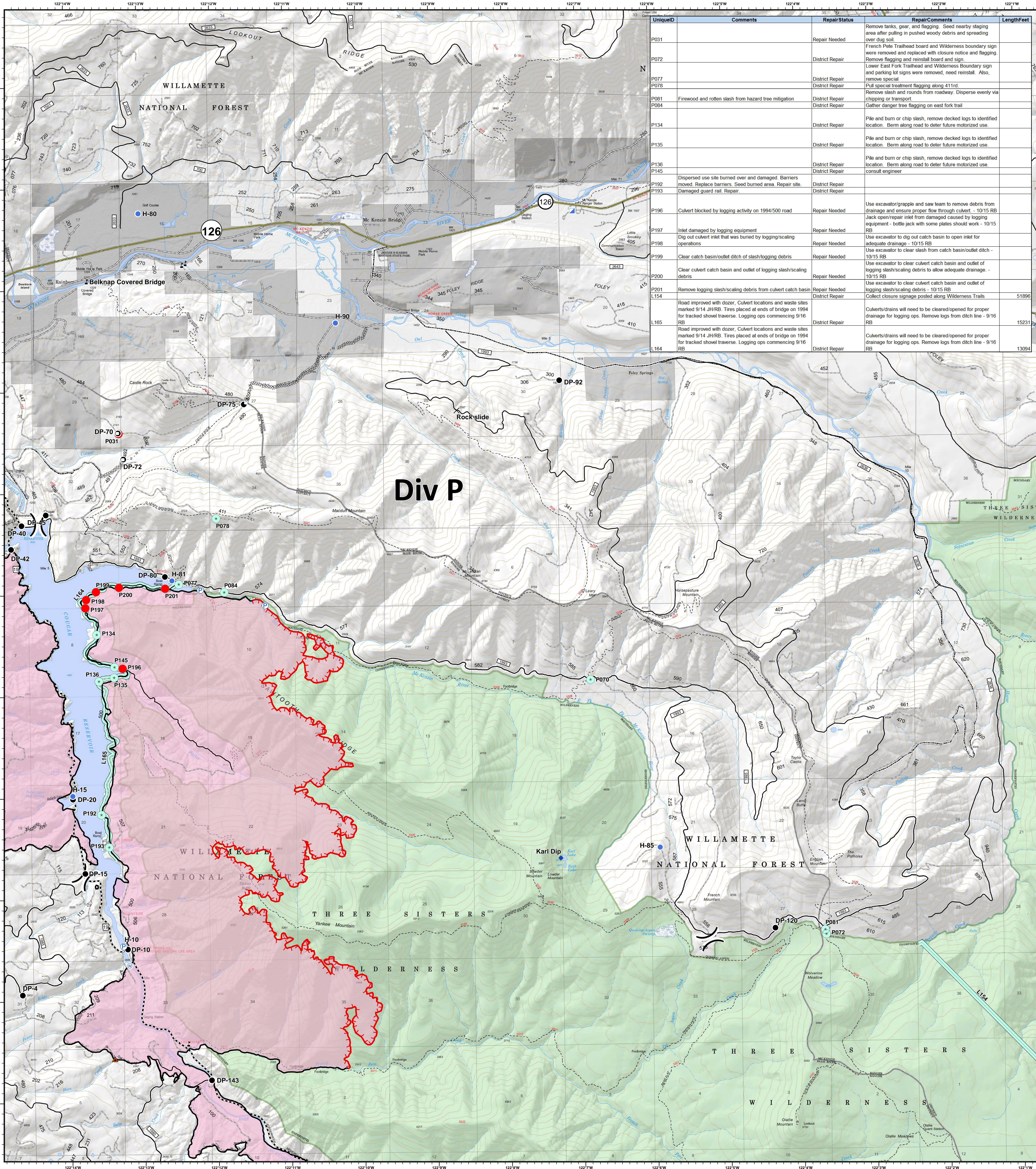


Div P - Repair Needed



UniqueID	Comments	RepairStatus	RepairComments	LengthFeet
P031		Repair Needed	Remove tanks, gear, and flagging. Seed nearby staging area after pulling in pushed woody debris and spreading over dry soil	
P072		District Repair	French Fork Trailhead board and Wilderness boundary sign were removed and replaced with closure notice and flagging. Remove flagging and reinstall board and sign.	
P077		District Repair	Lower East Fork Trailhead and Wilderness Boundary sign and parking lot signs were removed, need reinstal. Also, remove special	
P078		District Repair	Pull special treatment flagging along 411rd	
P081	Firewood and rotten slash from hazard tree mitigation	District Repair	Remove slash and rounds from roadway. Disperse evenly via chipping or transport	
P084		District Repair	Gather danger tree flagging on east fork trail	
P134		District Repair	Pile and burn or chip slash, remove decked logs to identified location. Berm along road to defer future motorized use.	
P135		District Repair	Pile and burn or chip slash, remove decked logs to identified location. Berm along road to defer future motorized use.	
P136		District Repair	Pile and burn or chip slash, remove decked logs to identified location. Berm along road to defer future motorized use.	
P137		District Repair	Pile and burn or chip slash, remove decked logs to identified location. Berm along road to defer future motorized use.	
P138		District Repair	Pile and burn or chip slash, remove decked logs to identified location. Berm along road to defer future motorized use.	
P139		District Repair	Pile and burn or chip slash, remove decked logs to identified location. Berm along road to defer future motorized use.	
P192	Dispersed use site burned over and damaged. Barriers moved. Replace barriers. Seed burned area	District Repair		
P193	Damaged guard rail. Repair.	District Repair		
P196	Culvert blocked by logging activity on 1994/500 road	Repair Needed	Use excavator/grapple and saw team to remove debris from drainage and ensure proper flow through culvert. - 10/15 RB	
P197	Inlet damaged by logging equipment	Repair Needed	Jack open/repair inlet from damaged caused by logging equipment - bottle jack with some plates should work - 10/15 RB	
P198	Dig out culvert inlet that was burned by logging/scaling operations	Repair Needed	Use excavator to dig out catch basin to open inlet for adequate drainage - 10/15 RB	
P199	Clear catch basin/outlet ditch of slash/logging debris	Repair Needed	Use excavator to clear slash from catch basin/outlet ditch - 10/15 RB	
P200	Clear culvert catch basin and outlet of logging slash/scaling debris	Repair Needed	Use excavator to clear culvert catch basin and outlet of logging slash/scaling debris to allow adequate drainage. - 10/15 RB	
P201	Remove logging slash/scaling debris from culvert catch basin	Repair Needed	Use excavator to clear culvert catch basin and outlet of logging slash/scaling debris - 10/15 RB	
L154	Road improved with dozer. Culvert locations and waste sites marked 9/14 JH/RB. Tires placed at ends of bridge on 1994 for tracked shovel traverse. Logging ops commencing 9/16 RB	District Repair	Culverts/drains will need to be cleared/opened for proper drainage for logging ops. Remove logs from ditch line - 9/16 RB	51896
L165	Road improved with dozer. Culvert locations and waste sites marked 9/14 JH/RB. Tires placed at ends of bridge on 1994 for tracked shovel traverse. Logging ops commencing 9/16 RB	District Repair	Culverts/drains will need to be cleared/opened for proper drainage for logging ops. Remove logs from ditch line - 9/16 RB	15231
L164	Road improved with dozer. Culvert locations and waste sites marked 9/14 JH/RB. Tires placed at ends of bridge on 1994 for tracked shovel traverse. Logging ops commencing 9/16 RB	District Repair	Culverts/drains will need to be cleared/opened for proper drainage for logging ops. Remove logs from ditch line - 9/16 RB	13094

Terwilliger OR-WIF-180227

Fire perimeter as of
10/09/2018, 2354 hrs
11,555 acres

Updated:
Oct 22, 2018
@ 2114

- | | | | | |
|----------------------|-------------------------|------------------|----------------------------------|---------------------|
| Repair Status | ▲ Impassable Road | Ⓟ Pump | — Completed Line | ▒ Private Ownership |
| ● Repair Needed | × Closure | Ⓢ Water Source | ⊘ Completed Dozer Line | ▒ US Forest Service |
| ● District Repair | ◆ Dip Site | Ⓣ Water Tank | - - - Completed Hand Line | ▒ Wilderness |
| ● District Repair | ● Drop Point | Ⓝ Value at Risk | R - R - R Road as Completed Line | |
| | ● Helibase |) Division Break | — Arterial Road | |
| | ● Helispot | | — Collector Road | |
| | ■ Incident Command Post | | — Local Road | |
| | | | — State Highway | |
| | | | — Uncontrolled Fire Edge | |

NAD83 UTM10N