

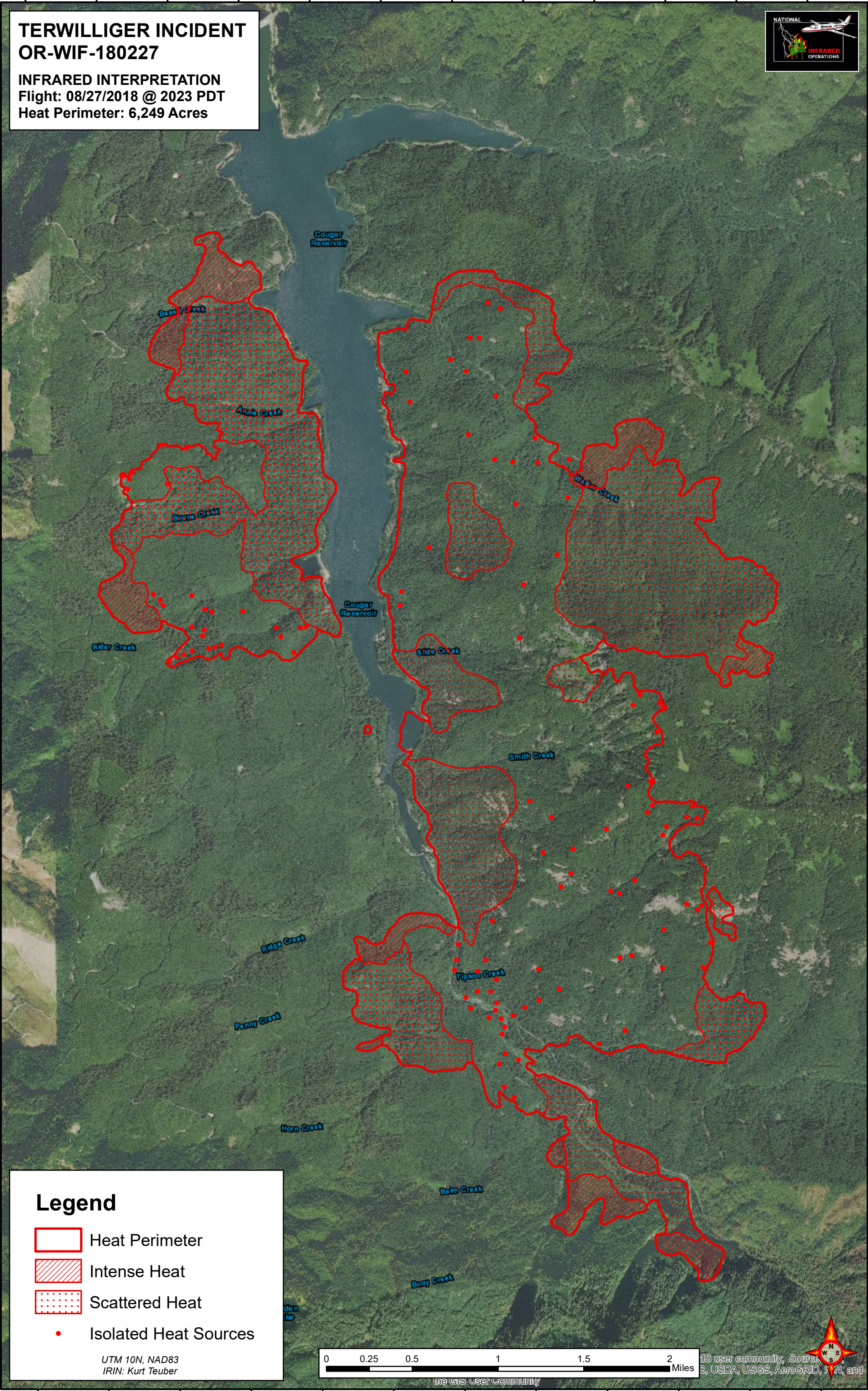
122°16'0"W 122°15'30"W 122°15'0"W 122°14'30"W 122°14'0"W 122°13'30"W 122°13'0"W 122°12'30"W 122°12'0"W 122°11'30"W 122°11'0"W 122°10'30"W

TERWILLIGER INCIDENT
OR-WIF-180227
INFRARED INTERPRETATION
Flight: 08/27/2018 @ 2023 PDT
Heat Perimeter: 6,249 Acres







44°7'30"N
44°7'0"N
44°6'30"N
44°6'0"N
44°5'30"N
44°5'0"N
44°4'30"N
44°4'0"N
44°3'30"N
44°3'0"N
44°2'30"N
44°2'0"N
44°1'30"N
44°1'0"N

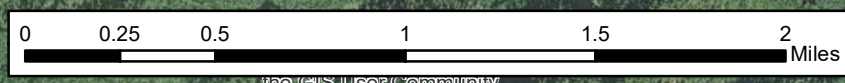
44°7'30"N
44°7'0"N
44°6'30"N
44°6'0"N
44°5'30"N
44°5'0"N
44°4'30"N
44°4'0"N
44°3'30"N
44°3'0"N
44°2'30"N
44°2'0"N
44°1'30"N
44°1'0"N



Legend

-  Heat Perimeter
-  Intense Heat
-  Scattered Heat
-  Isolated Heat Sources

UTM 10N, NAD83
IRIN: Kurt Teuber



GIS user community, Source S, USDA, USGS, AeroGRID, IGN, and the GIS User Community



122°16'0"W 122°15'30"W 122°15'0"W 122°14'30"W 122°14'0"W 122°13'30"W 122°13'0"W 122°12'30"W 122°12'0"W 122°11'30"W 122°11'0"W 122°10'30"W