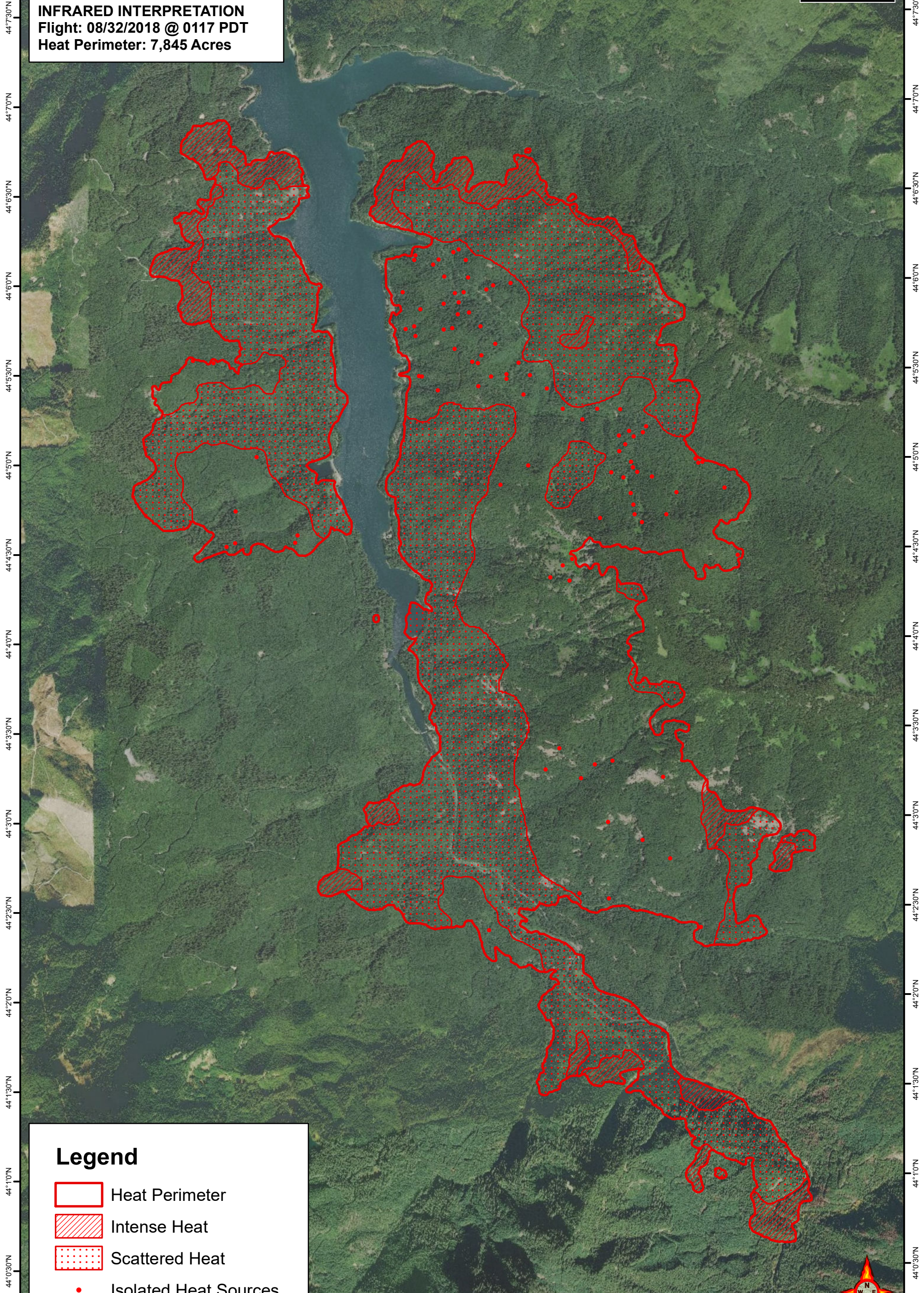






122°16'0"W 122°15'30"W 122°15'0"W 122°14'30"W 122°14'0"W 122°13'30"W 122°13'0"W 122°12'30"W 122°12'0"W 122°11'30"W 122°11'0"W 122°10'30"W 122°10'0"W 122°9'30"W

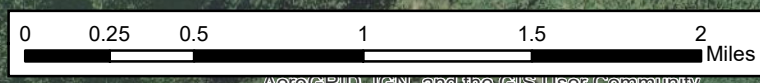
**TERWILLIGER INCIDENT**  
**OR-WIF-180227**  
**INFRARED INTERPRETATION**  
**Flight: 08/32/2018 @ 0117 PDT**  
**Heat Perimeter: 7,845 Acres**



**Legend**

-  Heat Perimeter
-  Intense Heat
-  Scattered Heat
-  Isolated Heat Sources

UTM 10N, NAD83  
IRIN: Kurt Teuber



AerogRID, IGN, and the GIS User Community | Imagery: CNES/Airbus DS, USDA, USGS

122°16'0"W 122°15'30"W 122°15'0"W 122°14'30"W 122°14'0"W 122°13'30"W 122°13'0"W 122°12'30"W 122°12'0"W 122°11'30"W 122°11'0"W 122°10'30"W 122°10'0"W