

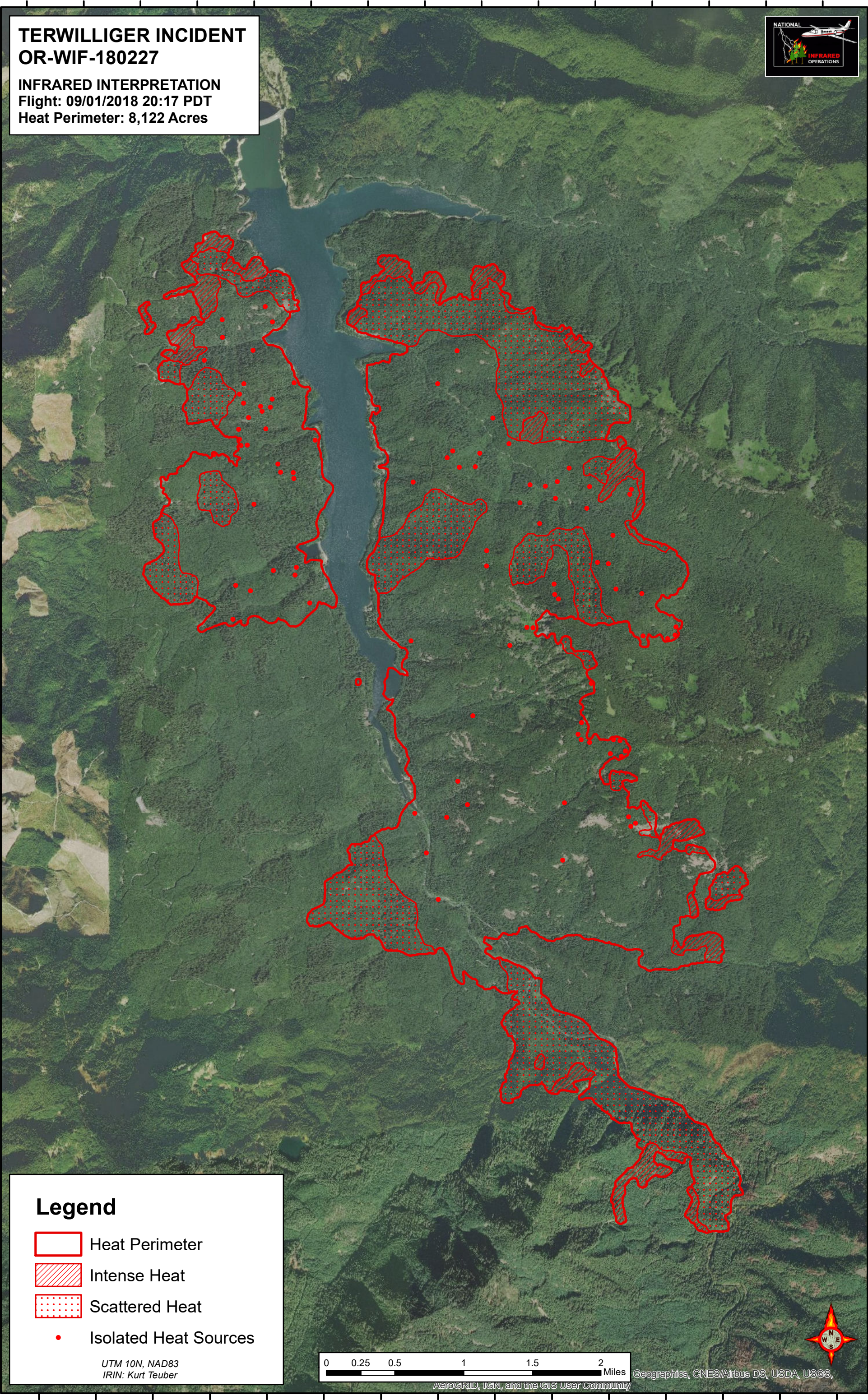
122°16'30"W 122°16'0"W 122°15'30"W 122°15'0"W 122°14'30"W 122°14'0"W 122°13'30"W 122°13'0"W 122°12'30"W 122°12'0"W 122°11'30"W 122°11'0"W 122°10'30"W 122°10'0"W 122°9'30"W

**TERWILLIGER INCIDENT**  
**OR-WIF-180227**  
INFRARED INTERPRETATION  
Flight: 09/01/2018 20:17 PDT  
Heat Perimeter: 8,122 Acres







44°8'0"N  
44°7'30"N  
44°7'0"N  
44°6'30"N  
44°6'0"N  
44°5'30"N  
44°5'0"N  
44°4'30"N  
44°4'0"N  
44°3'30"N  
44°3'0"N  
44°2'30"N  
44°2'0"N  
44°1'30"N  
44°1'0"N  
44°0'30"N  
44°0'0"N

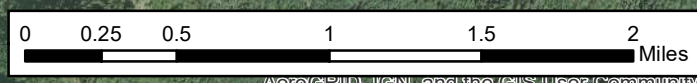
44°8'0"N  
44°7'30"N  
44°7'0"N  
44°6'30"N  
44°6'0"N  
44°5'30"N  
44°5'0"N  
44°4'30"N  
44°4'0"N  
44°3'30"N  
44°3'0"N  
44°2'30"N  
44°2'0"N  
44°1'30"N  
44°1'0"N  
44°0'30"N  
44°0'0"N



**Legend**

-  Heat Perimeter
-  Intense Heat
-  Scattered Heat
-  Isolated Heat Sources

UTM 10N, NAD83  
IRIN: Kurt Teuber



Geographics, CNES/Airbus DS, USDA, USGS, AeroGRID, IGN, and the GIS User Community

122°16'30"W 122°16'0"W 122°15'30"W 122°15'0"W 122°14'30"W 122°14'0"W 122°13'30"W 122°13'0"W 122°12'30"W 122°12'0"W 122°11'30"W 122°11'0"W 122°10'30"W 122°10'0"W 122°9'30"W