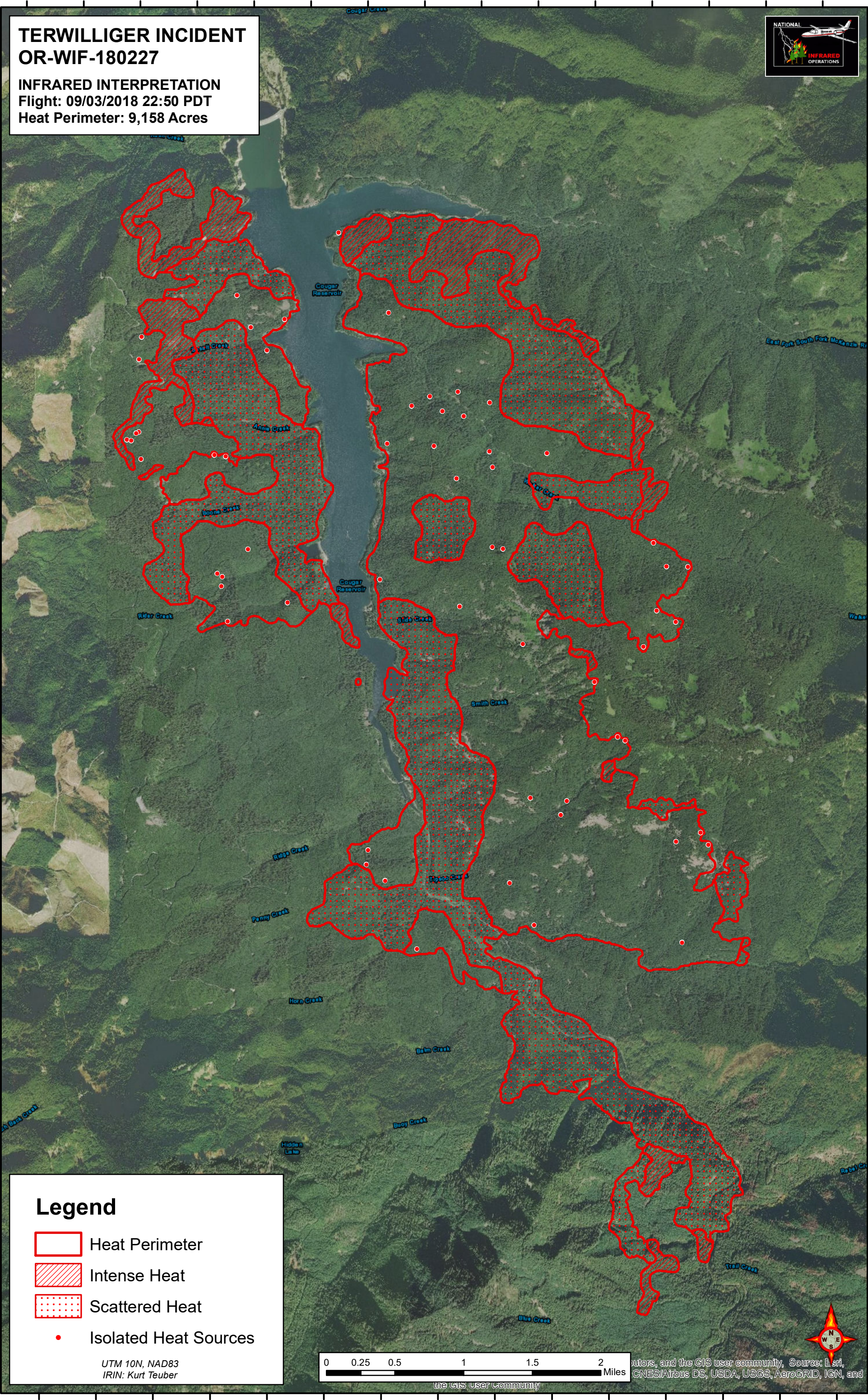






122°16'30"W 122°16'0"W 122°15'30"W 122°15'0"W 122°14'30"W 122°14'0"W 122°13'30"W 122°13'0"W 122°12'30"W 122°12'0"W 122°11'30"W 122°11'0"W 122°10'30"W 122°10'0"W 122°9'30"W

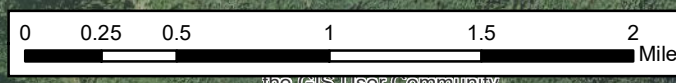
TERWILLIGER INCIDENT
OR-WIF-180227
INFRARED INTERPRETATION
Flight: 09/03/2018 22:50 PDT
Heat Perimeter: 9,158 Acres



Legend

-  Heat Perimeter
-  Intense Heat
-  Scattered Heat
-  Isolated Heat Sources

UTM 10N, NAD83
IRIN: Kurt Teuber



Source: Esri, CNES/Airbus DS, USDA, USGS, AeroGRID, IGN, and the GIS user community

122°16'30"W 122°16'0"W 122°15'30"W 122°15'0"W 122°14'30"W 122°14'0"W 122°13'30"W 122°13'0"W 122°12'30"W 122°12'0"W 122°11'30"W 122°11'0"W 122°10'30"W 122°10'0"W 122°9'30"W