

Timber Crater 6 Fire

OR-CLP-000248

July 27, 2018

NAD 83

Aviation Map

3125 Ac. as of

July 26, 2151



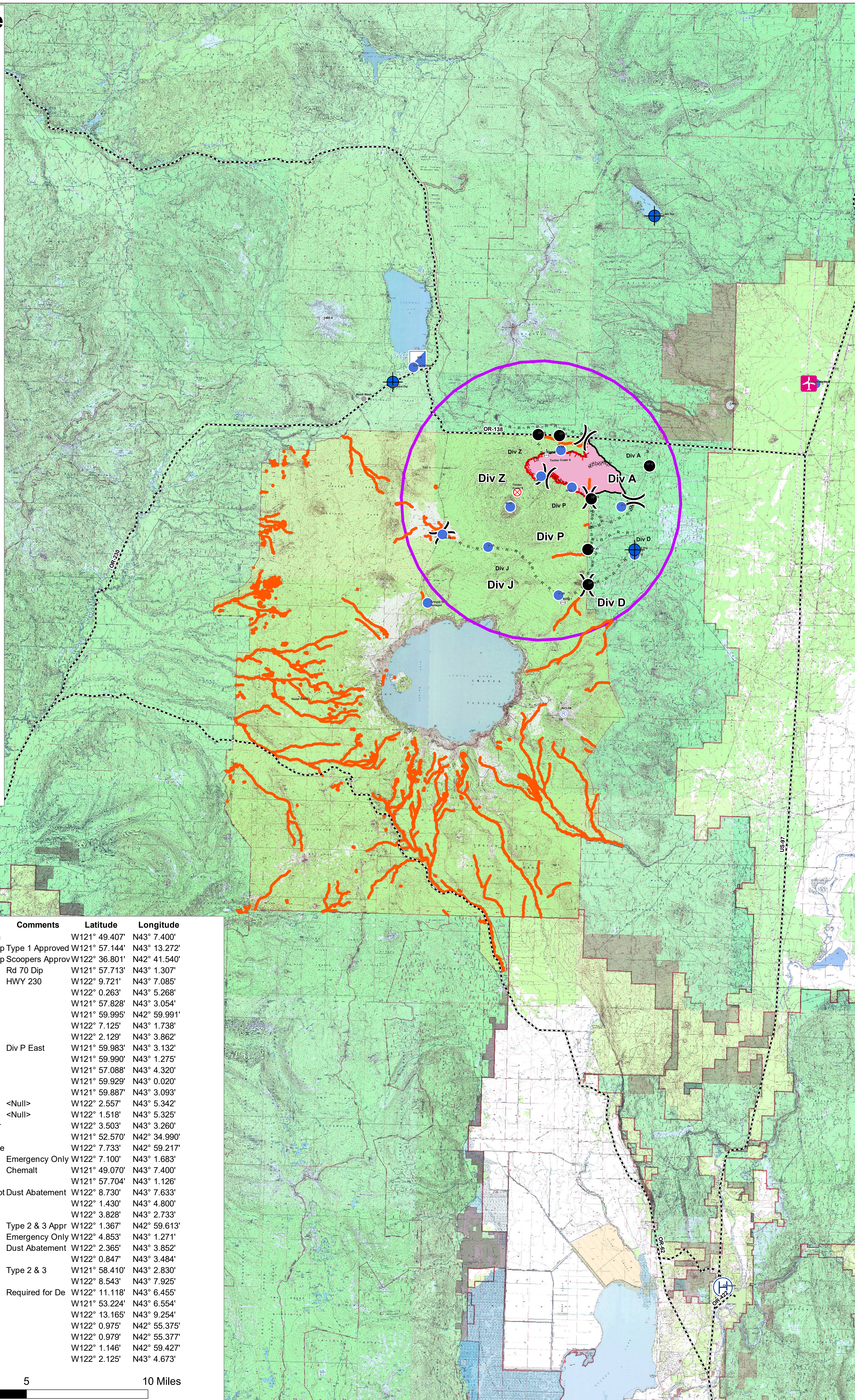
Legend

- Airstrip or Airport
- Dip Site
- Drop Point
- Fire Origin
- Helibase
- Helispot
- Incident Command Post
- Repeater
- Sling Site
- Other
- Division Break

- Hwys
- citylim
- RetardentAvoid
- TFR

Ownership

- BLM
- National Park Service
- Private
- USFS



Feature Cate	Label	Comments	Latitude	Longitude
Airstrip or Airp	Beaver Marsh		W121° 49.407'	N43° 7.400'
Dip Site	Miller Lake Dip	Type 1 Approved	W121° 57.144'	N43° 13.272'
Dip Site	Lost Creek Dip	Scoopers Approv	W122° 36.801'	N42° 41.540'
Dip Site	Rd 70 Dip	Rd 70 Dip	W121° 57.713'	N43° 1.307'
Dip Site	Diamond Dip	HWY 230	W122° 9.721'	N43° 7.085'
Division Break	Div Z		W122° 0.263'	N43° 5.268'
Division Break	Div A		W121° 57.828'	N43° 3.054'
Division Break	Div D		W121° 59.995'	N42° 59.991'
Division Break	Div M		W122° 7.125'	N43° 1.738'
Division Break	Div P		W122° 2.129'	N43° 3.862'
Division Break		Div P East	W121° 59.983'	N43° 3.132'
Drop Point	DP 41		W121° 59.990'	N43° 1.275'
Drop Point	DP 8		W121° 57.088'	N43° 4.320'
Drop Point	DP 64		W121° 59.929'	N43° 0.020'
Drop Point	DP 22		W121° 59.887'	N43° 3.093'
Drop Point	DP 60	<Null>	W122° 2.557'	N43° 5.342'
Drop Point	DP 62	<Null>	W122° 1.518'	N43° 5.325'
Fire Origin	Timber Crater		W122° 3.503'	N43° 3.260'
Helibase	Chiloquin		W121° 52.570'	N42° 34.990'
Helispot	Grouse Hill He		W122° 7.733'	N42° 59.217'
Helispot	H-39	Emergency Only	W122° 7.100'	N43° 1.683'
Helispot	Snow Park	Chemalt	W121° 49.070'	N43° 7.400'
Helispot	H-15		W121° 57.704'	N43° 1.126'
Helispot	Camp Helispot	Dust Abatement	W122° 8.730'	N43° 7.633'
Helispot	H-68		W122° 1.430'	N43° 4.800'
Helispot	H-45		W122° 3.828'	N43° 2.733'
Helispot	H-25	Type 2 & 3 Appr	W122° 1.367'	N42° 59.613'
Helispot	H-35	Emergency Only	W122° 4.853'	N43° 1.271'
Helispot	H-61	Dust Abatement	W122° 2.365'	N43° 3.852'
Helispot	H-55		W122° 0.847'	N43° 3.484'
Helispot	H-21	Type 2 & 3	W121° 58.410'	N43° 2.830'
Incident Com	ICP		W122° 8.543'	N43° 7.925'
Other	Weed Wash	Required for De	W122° 11.118'	N43° 6.455'
Repeater	CMD 7		W121° 53.224'	N43° 6.554'
Repeater	CMD 8		W122° 13.165'	N43° 9.254'
Repeater	Air Link		W122° 0.975'	N42° 55.375'
Repeater	L6		W122° 0.979'	N42° 55.377'
Sling Site	Sling 1		W122° 1.146'	N42° 59.427'
Sling Site	Sling 2		W122° 2.125'	N43° 4.673'

0 5 10 Miles

