

Legend

- Dip Site
- Drop Point
- Helispot
- ICP
- Repeater
- Sling Site
- Weed Wash
- Division Break
- Major Roads
- Completed Line
- Completed Dozer Line
- Completed Hand Line
- R - R - Road as Completed Line
- Zulu Access
- Road
- Trail

Transport Time

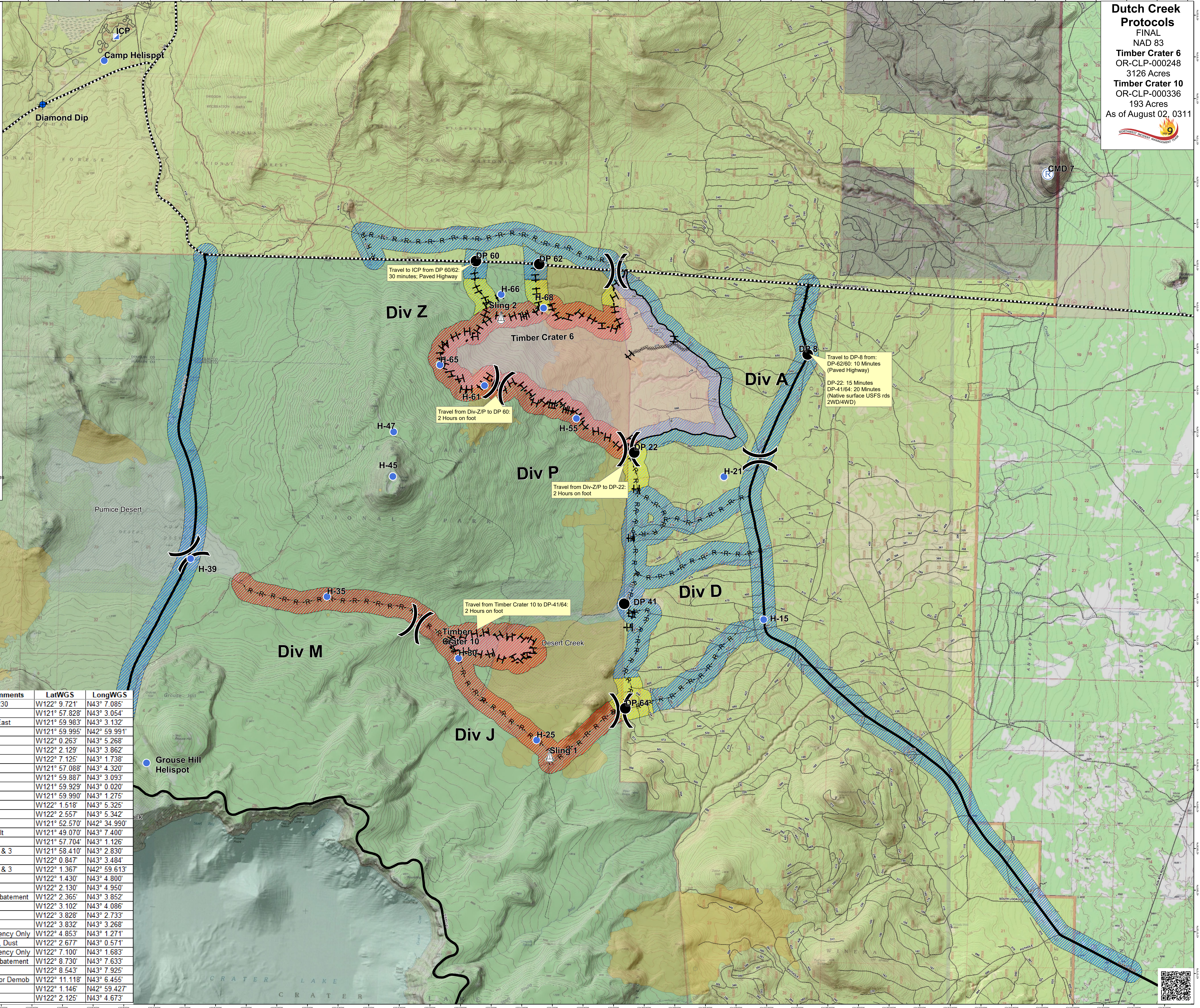
- >2 Hours
- 1 - 2 Hours
- <1 Hour
- Historic Fires

Ownership

- National Park Service
- Oregon Department of Forestry
- USFS
- Resource Natural Area

0 0.45 0.9 1.8 Miles

**Dutch Creek
Protocols**
FINAL
NAD 83
Timber Crater 6
OR-CLP-000248
3126 Acres
Timber Crater 10
OR-CLP-000336
193 Acres
As of August 02, 0311



FeatureCategory	Label	Comments	LatWGS	LongWGS
Dip Site	Diamond Dip	HWY 230	W122° 9.721'	N43° 7.085'
Division Break	Div A		W121° 57.828'	N43° 3.054'
Division Break	Div Z	Div P East	W121° 59.983'	N43° 3.132'
Division Break	Div D		W121° 59.995'	N42° 59.991'
Division Break	Div Z		W122° 0.263'	N43° 5.268'
Division Break	Div P		W122° 2.129'	N43° 3.862'
Division Break	Div M		W122° 7.125'	N43° 1.738'
Drop Point	DP 8		W121° 57.088'	N43° 4.320'
Drop Point	DP 22		W121° 59.887'	N43° 3.093'
Drop Point	DP 64		W121° 59.929'	N43° 0.020'
Drop Point	DP 41		W121° 59.990'	N43° 1.275'
Drop Point	DP 62		W122° 1.518'	N43° 5.325'
Drop Point	DP 60		W122° 2.557'	N43° 5.342'
Helibase	Chiloquin		W121° 52.570'	N42° 34.990'
Helispot	Snow Park	Chemalt	W121° 49.070'	N43° 7.400'
Helispot	H-15		W121° 57.704'	N43° 1.126'
Helispot	H-21	Type 2 & 3	W121° 58.410'	N43° 2.830'
Helispot	H-55		W122° 0.847'	N43° 3.484'
Helispot	H-25	Type 2 & 3	W122° 1.367'	N42° 59.613'
Helispot	H-68		W122° 1.430'	N43° 4.800'
Helispot	H-66	Type 3	W122° 2.130'	N43° 4.950'
Helispot	H-61	Dust Abatement	W122° 2.365'	N43° 3.852'
Helispot	H-65		W122° 3.102'	N43° 4.086'
Helispot	H-45		W122° 3.828'	N43° 2.733'
Helispot	H-47	Type 3	W122° 3.832'	N43° 3.268'
Helispot	H-35	Emergency Only	W122° 4.853'	N43° 1.271'
Helispot	H-30	Type 3, Dust	W122° 2.677'	N43° 0.571'
Helispot	H-39	Emergency Only	W122° 7.100'	N43° 1.683'
Helispot	Camp H-spot	Dust Abatement	W122° 8.730'	N43° 7.633'
Incident Cmd Post	ICP		W122° 8.543'	N43° 7.925'
Other	Weed Wash	Req'd for Demob	W122° 11.118'	N43° 6.455'
Sling Site	Sling 1		W122° 1.146'	N42° 59.427'
Sling Site	Sling 2		W122° 2.125'	N43° 4.673'

