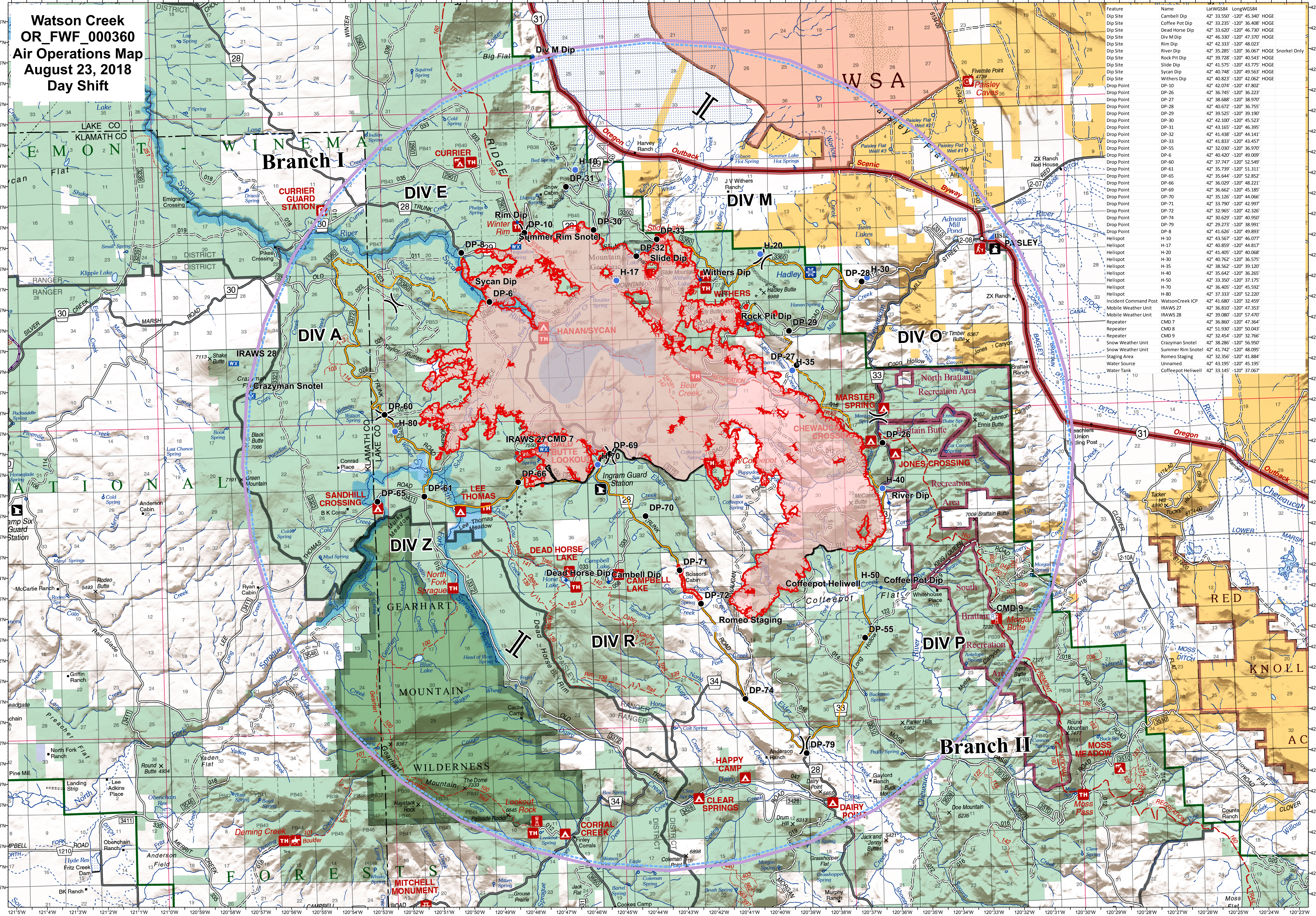


**Watson Creek
OR_FW_000360
Air Operations Map
August 23, 2018
Day Shift**



Feature	Name	Lat/Long	Long/WGS84
Dip Site	Cambell Dip	42° 33.55'	120° 35.30'
Dip Site	Coffee Pot Dip	42° 33.35'	120° 36.00'
Dip Site	Dead Horse Dip	42° 33.60'	120° 46.70'
Dip Site	Div M Dip	42° 46.30'	120° 47.70'
Dip Site	Div Dip	42° 42.33'	120° 48.02'
Dip Site	Rim Dip	42° 46.30'	120° 47.70'
Dip Site	River Dip	42° 35.28'	120° 36.06'
Dip Site	Rock Pit Dip	42° 39.72'	120° 40.54'
Dip Site	Slide Dip	42° 41.57'	120° 43.77'
Dip Site	Sycan Dip	42° 40.78'	120° 49.56'
Dip Site	Withers Dip	42° 40.82'	120° 42.06'
Drop Point	DP-10	42° 42.07'	120° 47.80'
Drop Point	DP-26	42° 36.74'	120° 36.22'
Drop Point	DP-27	42° 36.08'	120° 38.70'
Drop Point	DP-28	42° 40.67'	120° 36.75'
Drop Point	DP-29	42° 39.52'	120° 39.19'
Drop Point	DP-30	42° 42.10'	120° 45.52'
Drop Point	DP-31	42° 41.16'	120° 46.39'
Drop Point	DP-32	42° 41.43'	120° 44.14'
Drop Point	DP-33	42° 41.83'	120° 43.45'
Drop Point	DP-55	42° 42.00'	120° 36.97'
Drop Point	DP-6	42° 40.40'	120° 49.09'
Drop Point	DP-60	42° 37.74'	120° 52.54'
Drop Point	DP-61	42° 35.73'	120° 51.31'
Drop Point	DP-65	42° 35.64'	120° 52.85'
Drop Point	DP-69	42° 36.02'	120° 38.70'
Drop Point	DP-70	42° 36.66'	120° 45.18'
Drop Point	DP-71	42° 35.12'	120° 44.06'
Drop Point	DP-72	42° 33.70'	120° 42.99'
Drop Point	DP-74	42° 32.96'	120° 42.32'
Drop Point	DP-74	42° 30.62'	120° 40.95'
Drop Point	DP-79	42° 29.27'	120° 38.91'
Drop Point	H-10	42° 41.62'	120° 48.93'
Helispot	H-18	42° 43.56'	120° 46.07'
Helispot	H-17	42° 40.85'	120° 44.81'
Helispot	H-20	42° 41.40'	120° 40.68'
Helispot	H-30	42° 40.76'	120° 36.57'
Helispot	H-35	42° 38.52'	120° 39.20'
Helispot	H-40	42° 35.64'	120° 36.26'
Helispot	H-50	42° 33.50'	120° 37.17'
Helispot	H-70	42° 36.40'	120° 45.59'
Helispot	H-80	42° 37.33'	120° 52.20'
Incident Command Post	WatsonCreek ICP	42° 41.68'	120° 32.45'
Mobile Weather Unit	IRAWS 27	42° 36.81'	120° 47.35'
Mobile Weather Unit	IRAWS 28	42° 39.08'	120° 57.47'
Repeater	CMD 7	42° 36.60'	120° 47.34'
Repeater	CMD 8	42° 51.93'	120° 50.04'
Repeater	CMD 9	42° 32.45'	120° 32.76'
Snow Weather Unit	Summer Rim Snotel	42° 38.28'	120° 56.95'
Snow Weather Unit	Summer Rim Snotel	42° 41.74'	120° 48.95'
Staging Area	Romeo Staging	42° 32.35'	120° 41.88'
Water Source	Unnamed	42° 43.19'	120° 45.19'
Water Tank	Coffeepot Well	42° 33.14'	120° 37.06'

Dip Site	Mobile Weather Unit	Division Break	Uncontrolled Fire Edge	Completed Hand Line	TFR 8_3065
Water Source	Repeater	Completed Line	Completed Dozer Line	Road as Completed Line	
Drop Point	Staging Area	Branch Break	Fire Spread Prediction		
Helispot	Heliwell				
Incident Command Post					

0 0.5 1 2 3 4 Miles

NW INT 6
8/22/2018 11:04:36 PM