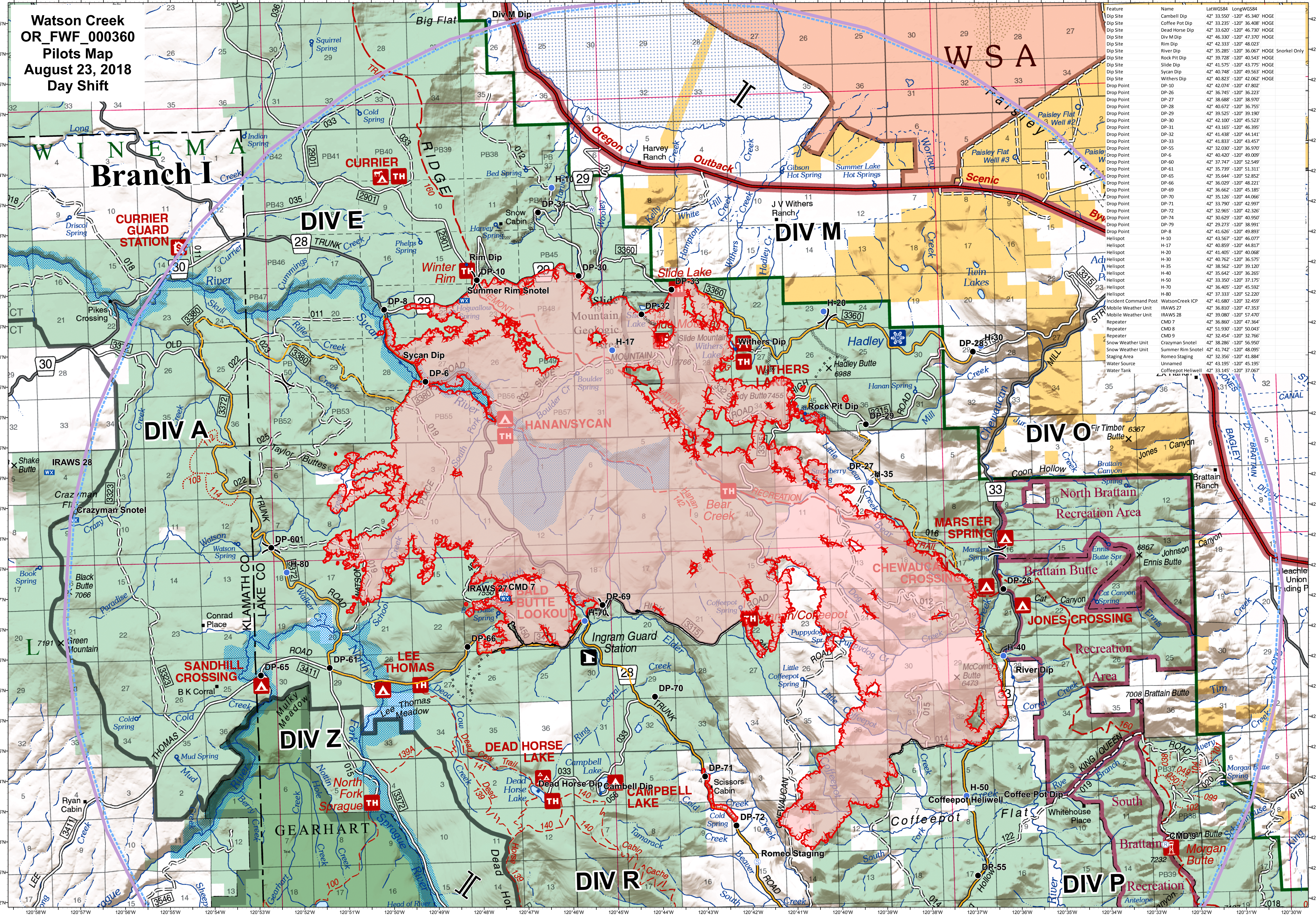


**Watson Creek
OR_FW_000360
Pilots Map
August 23, 2018
Day Shift**



Feature	Name	LatWGS84	LongWGS84
Dip Site	Cambell Dip	42° 33.535'	120° 36.308'
Dip Site	Coffee Pot Dip	42° 33.620'	120° 46.730'
Dip Site	Dead Horse Dip	42° 33.620'	120° 46.730'
Dip Site	Div M Dip	42° 46.330'	120° 47.370'
Dip Site	Rim Dip	42° 42.333'	120° 48.023'
Dip Site	River Dip	42° 35.285'	120° 36.067'
Dip Site	Rock Pit Dip	42° 39.728'	120° 40.543'
Dip Site	Slide Dip	42° 41.575'	120° 43.775'
Dip Site	Sycan Dip	42° 40.748'	120° 49.563'
Dip Site	Withers Dip	42° 40.823'	120° 42.062'
Drop Point	DP-10	42° 42.074'	120° 47.802'
Drop Point	DP-26	42° 36.745'	120° 36.223'
Drop Point	DP-27	42° 38.688'	120° 38.700'
Drop Point	DP-28	42° 40.672'	120° 36.755'
Drop Point	DP-29	42° 39.525'	120° 39.190'
Drop Point	DP-30	42° 42.100'	120° 45.523'
Drop Point	DP-31	42° 43.165'	120° 46.395'
Drop Point	DP-32	42° 41.438'	120° 44.141'
Drop Point	DP-33	42° 41.833'	120° 43.457'
Drop Point	DP-55	42° 32.030'	120° 36.970'
Drop Point	DP-6	42° 40.420'	120° 49.009'
Drop Point	DP-60	42° 37.747'	120° 52.549'
Drop Point	DP-61	42° 35.739'	120° 51.311'
Drop Point	DP-65	42° 35.644'	120° 52.852'
Drop Point	DP-66	42° 36.029'	120° 48.221'
Drop Point	DP-69	42° 35.662'	120° 45.185'
Drop Point	DP-70	42° 35.126'	120° 44.066'
Drop Point	DP-71	42° 33.790'	120° 42.997'
Drop Point	DP-72	42° 32.965'	120° 42.326'
Drop Point	DP-74	42° 30.629'	120° 40.950'
Drop Point	DP-79	42° 29.273'	120° 38.991'
Drop Point	DP-8	42° 41.626'	120° 48.893'
Helispot	H-10	42° 43.567'	120° 46.077'
Helispot	H-17	42° 40.859'	120° 44.817'
Helispot	H-20	42° 41.405'	120° 40.688'
Helispot	H-30	42° 40.762'	120° 36.575'
Helispot	H-35	42° 38.522'	120° 39.120'
Helispot	H-40	42° 35.642'	120° 36.265'
Helispot	H-50	42° 33.507'	120° 37.175'
Helispot	H-70	42° 36.405'	120° 45.592'
Helispot	H-80	42° 37.333'	120° 52.220'
Incident Command Post	WatsonCreek ICP	42° 41.680'	120° 32.459'
Mobile Weather Unit	IRAWS 27	42° 36.810'	120° 47.353'
Mobile Weather Unit	IRAWS 28	42° 39.080'	120° 57.470'
Repeater	CMD 7	42° 36.860'	120° 47.364'
Repeater	CMD 8	42° 51.930'	120° 50.043'
Repeater	CMD 9	42° 32.454'	120° 32.766'
Snow Weather Unit	Summer Rim Snotel	42° 38.286'	120° 36.950'
Snow Weather Unit	Summer Rim Snotel	42° 41.742'	120° 48.985'
Staging Area	Romeo Staging	42° 32.356'	120° 41.884'
Water Source	Unnamed	42° 43.195'	120° 45.195'
Water Tank	Coffeepot Hellwell	42° 33.145'	120° 37.067'

◆ Dip Site	Ⓜ Mobile Weather Unit	⎓ Division Break	— Uncontrolled Fire Edge	· · · · · Completed Hand Line	Ⓜ TFR 8_3065
Ⓜ Water Source	Ⓜ Repeater	⎓ Branch Break	— Completed Line	· · · · · Road as Completed Line	
● Drop Point	Ⓜ Staging Area		Ⓜ Completed Dozer Line	— Fire Spread Prediction	
● Helispot	Ⓜ Heliwell				
Ⓜ Incident Command Post					

0 0.5 1 2 3 4 Miles

NW INT 6
8/22/2018 11:04:36 PM