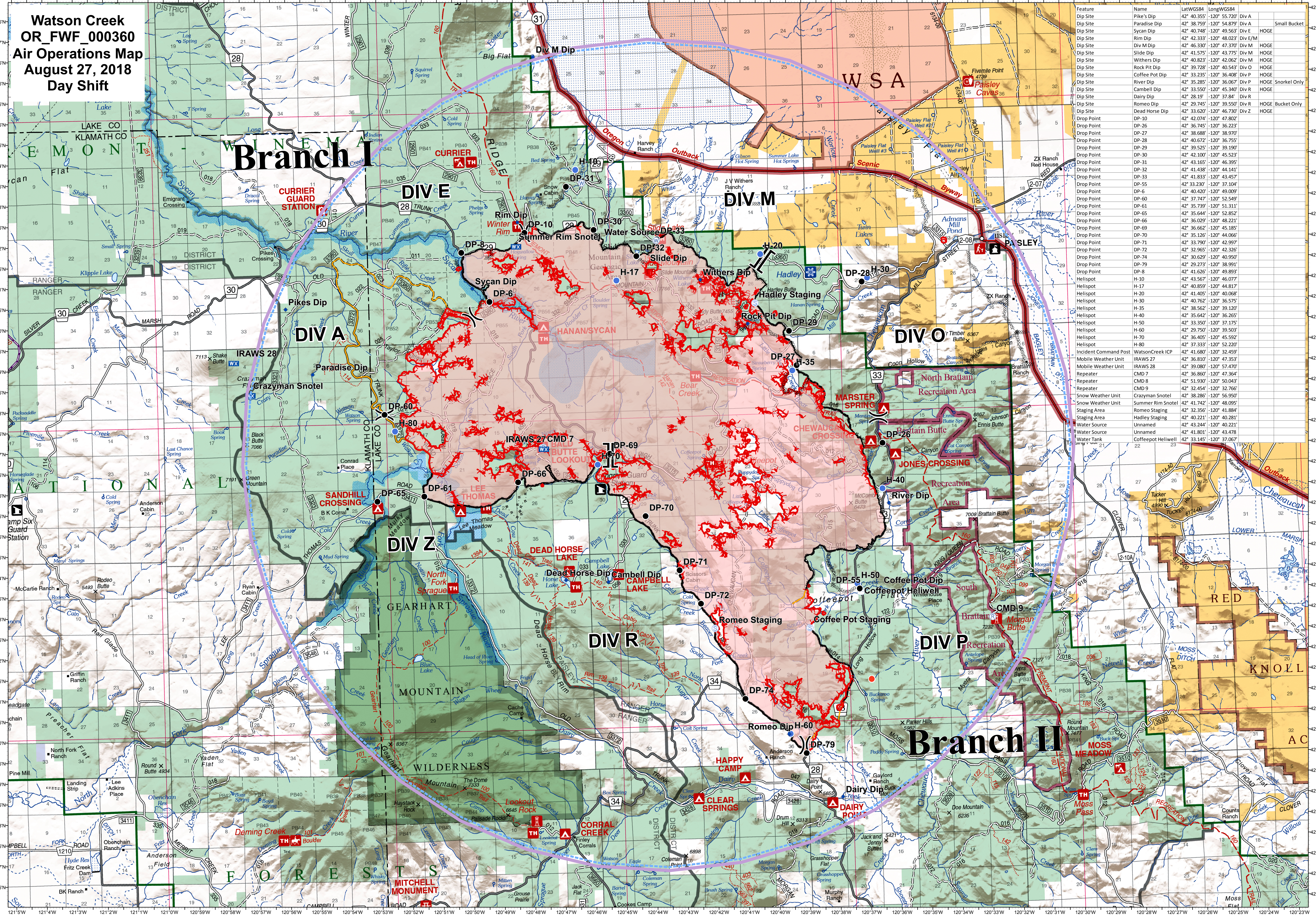


**Watson Creek
OR_FW_000360
Air Operations Map
August 27, 2018
Day Shift**



Feature	Name	Lat	Long	Div	Notes
Dip Site	Pike's Dip	42° 40.355'	-120° 55.720'	Div A	
Dip Site	Paradise Dip	42° 38.739'	-120° 48.879'	Div A	Small Bucket
Dip Site	Sycan Dip	42° 38.748'	-120° 48.533'	Div E	HOGE
Dip Site	Rim Dip	42° 42.333'	-120° 48.023'	Div E/M	
Dip Site	Div M Dip	42° 46.330'	-120° 47.370'	Div M	HOGE
Dip Site	Slide Dip	42° 41.575'	-120° 43.775'	Div M	HOGE
Dip Site	Withers Dip	42° 40.823'	-120° 42.062'	Div M	HOGE
Dip Site	Rock Pit Dip	42° 39.728'	-120° 40.543'	Div O	HOGE
Dip Site	Coffee Pot Dip	42° 33.235'	-120° 36.408'	Div P	HOGE
Dip Site	River Dip	42° 35.285'	-120° 36.067'	Div P	HOGE Snorkel Only
Dip Site	Cambell Dip	42° 33.550'	-120° 45.340'	Div R	HOGE
Dip Site	Dairy Dip	42° 28.19'	-120° 37.84'	Div R	HOGE
Dip Site	Romeo Dip	42° 29.745'	-120° 39.550'	Div R	HOGE Bucket Only
Dip Site	Dead Horse Dip	42° 33.620'	-120° 46.730'	Div Z	HOGE
Drop Point	DP-10	42° 42.074'	-120° 47.802'		
Drop Point	DP-26	42° 36.745'	-120° 36.223'		
Drop Point	DP-27	42° 38.688'	-120° 38.970'		
Drop Point	DP-28	42° 40.672'	-120° 36.755'		
Drop Point	DP-29	42° 39.525'	-120° 39.190'		
Drop Point	DP-30	42° 42.100'	-120° 45.523'		
Drop Point	DP-31	42° 43.165'	-120° 46.395'		
Drop Point	DP-32	42° 41.438'	-120° 44.141'		
Drop Point	DP-33	42° 41.833'	-120° 43.457'		
Drop Point	DP-35	42° 33.230'	-120° 37.104'		
Drop Point	DP-6	42° 40.420'	-120° 49.009'		
Drop Point	DP-60	42° 37.747'	-120° 52.549'		
Drop Point	DP-65	42° 35.739'	-120° 51.311'		
Drop Point	DP-66	42° 36.644'	-120° 52.824'		
Drop Point	DP-69	42° 36.009'	-120° 48.221'		
Drop Point	DP-70	42° 36.662'	-120° 45.185'		
Drop Point	DP-71	42° 35.128'	-120° 44.066'		
Drop Point	DP-72	42° 33.790'	-120° 42.997'		
Drop Point	DP-74	42° 32.965'	-120° 42.326'		
Drop Point	DP-77	42° 30.629'	-120° 40.959'		
Drop Point	DP-79	42° 29.273'	-120° 38.991'		
Drop Point	DP-98	42° 41.626'	-120° 49.893'		
Helispot	H-10	42° 43.567'	-120° 46.077'		
Helispot	H-17	42° 40.859'	-120° 44.817'		
Helispot	H-20	42° 41.405'	-120° 40.068'		
Helispot	H-30	42° 40.762'	-120° 36.575'		
Helispot	H-35	42° 38.562'	-120° 39.120'		
Helispot	H-40	42° 35.642'	-120° 36.265'		
Helispot	H-50	42° 33.350'	-120° 37.175'		
Helispot	H-60	42° 29.750'	-120° 39.503'		
Helispot	H-70	42° 36.405'	-120° 45.592'		
Helispot	H-80	42° 37.333'	-120° 52.220'		
Incident Command Post	WatsonCreek ICP	42° 41.680'	-120° 32.459'		
Mobile Weather Unit	IRAWS 27	42° 36.810'	-120° 47.353'		
Mobile Weather Unit	IRAWS 28	42° 39.080'	-120° 57.470'		
Repeater	CMD 7	42° 36.860'	-120° 47.364'		
Repeater	CMD 8	42° 51.930'	-120° 50.043'		
Repeater	CMD 9	42° 32.454'	-120° 52.766'		
Snow Weather Unit	Crazyman Snotel	42° 38.285'	-120° 56.899'		
Staging Area	Summer Rim Snotel	42° 41.742'	-120° 48.095'		
Staging Area	Romeo Staging	42° 32.356'	-120° 41.894'		
Staging Area	Hadley Staging	42° 40.221'	-120° 40.281'		
Water Source	Unnamed	42° 43.244'	-120° 40.221'		
Water Source	Unnamed	42° 41.801'	-120° 43.478'		
Water Tank	Coffeepot Heliwell	42° 33.145'	-120° 37.067'		

• Dip Site	☒ Incident Command Post	⌋ Division Break	— Uncontrolled Fire Edge	— Completed Hand Line	☒ TFR 8_3065
⊕ Water Source	☒ Mobile Weather Unit	⌋ Branch Break	— Completed Line	— Road as Completed Line	
● Drop Point	⊕ Repeater		⊘ Completed Dozer Line	— Fire Spread Prediction	
⊕ Helispot	⊕ Staging Area				
● Hot Spot	☒ Heliwell				

0 0.5 1 2 3 4 Miles

NW IMT 6
8/26/2018 10:16:52 PM