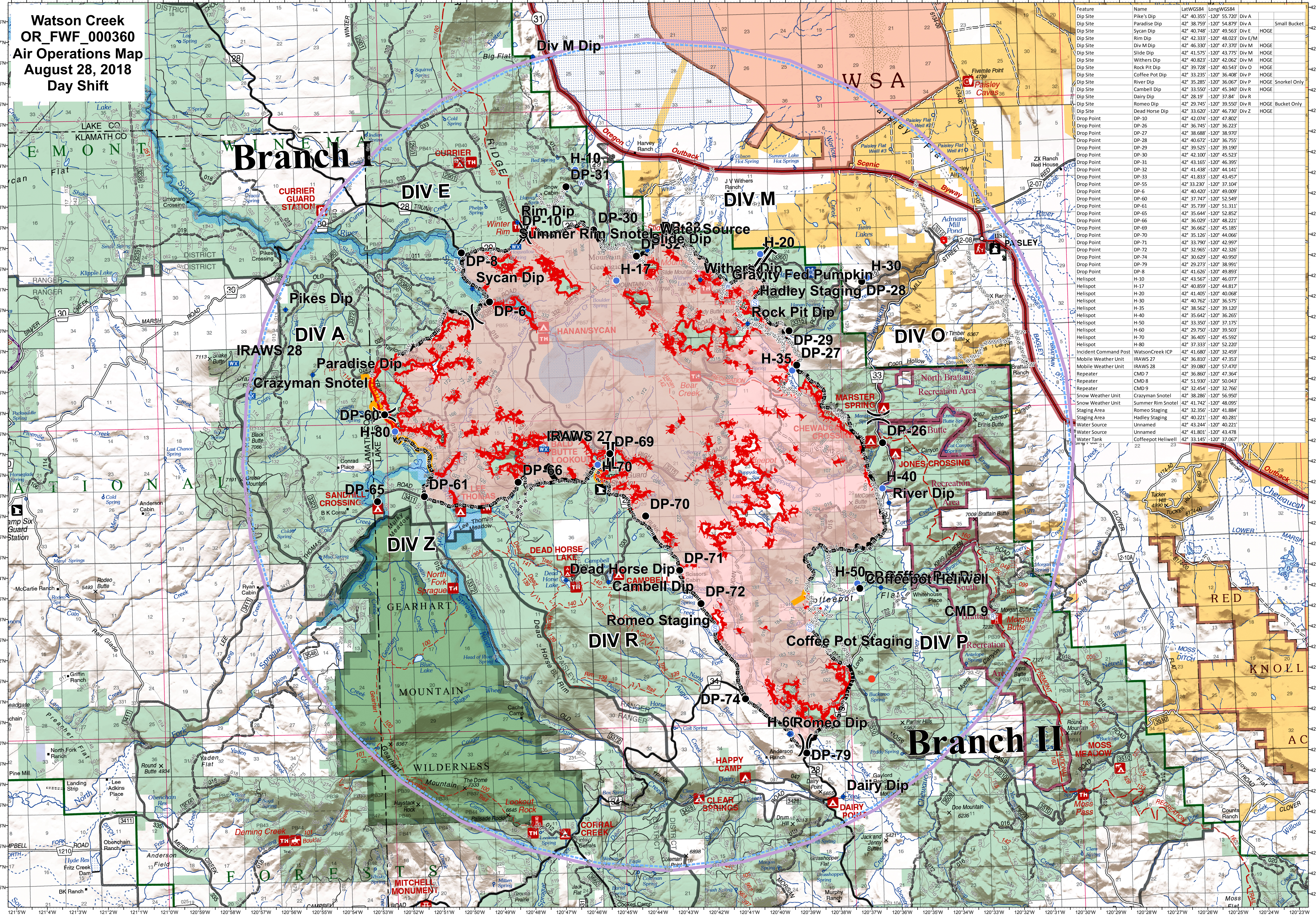



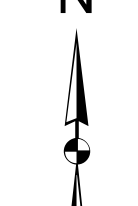

**Watson Creek
OR_FW_000360
Air Operations Map
August 28, 2018
Day Shift**



Feature	Name	Lat	Long	Notes
Dip Site	Pike's Dip	42° 40.355'	-120° 55.720'	Div A
Dip Site	Paradise Dip	42° 38.759'	-120° 54.879'	Div A
Dip Site	Sycan Dip	42° 40.748'	-120° 48.533'	Div E
Dip Site	Rim Dip	42° 42.333'	-120° 48.023'	Div E/M
Dip Site	Div M Dip	42° 46.300'	-120° 47.370'	Div M
Dip Site	Slide Dip	42° 41.575'	-120° 43.775'	Div M
Dip Site	Withers Dip	42° 40.823'	-120° 42.062'	Div M
Dip Site	Rock Pit Dip	42° 39.728'	-120° 40.543'	Div O
Dip Site	Coffee Pot Dip	42° 33.235'	-120° 36.408'	Div P
Dip Site	River Dip	42° 35.285'	-120° 36.067'	Div P
Dip Site	Cambell Dip	42° 28.191'	-120° 37.841'	Div R
Dip Site	Dairy Dip	42° 29.745'	-120° 39.550'	Div R
Dip Site	Romeo Dip	42° 33.620'	-120° 46.730'	Div Z
Dip Site	Dead Horse Dip	42° 42.074'	-120° 47.802'	
Drop Point	DP-10	42° 36.745'	-120° 36.223'	
Drop Point	DP-27	42° 38.688'	-120° 38.970'	
Drop Point	DP-28	42° 40.672'	-120° 36.755'	
Drop Point	DP-29	42° 39.525'	-120° 39.190'	
Drop Point	DP-30	42° 42.100'	-120° 45.523'	
Drop Point	DP-31	42° 43.165'	-120° 46.395'	
Drop Point	DP-32	42° 41.438'	-120° 44.141'	
Drop Point	DP-33	42° 41.833'	-120° 43.457'	
Drop Point	DP-34	42° 33.230'	-120° 37.104'	
Drop Point	DP-6	42° 40.420'	-120° 49.009'	
Drop Point	DP-60	42° 37.747'	-120° 52.549'	
Drop Point	DP-65	42° 35.739'	-120° 51.311'	
Drop Point	DP-66	42° 36.644'	-120° 52.852'	
Drop Point	DP-69	42° 36.009'	-120° 48.221'	
Drop Point	DP-70	42° 36.662'	-120° 45.185'	
Drop Point	DP-71	42° 35.128'	-120° 44.066'	
Drop Point	DP-72	42° 33.790'	-120° 42.997'	
Drop Point	DP-74	42° 32.965'	-120° 42.326'	
Drop Point	DP-77	42° 30.629'	-120° 40.959'	
Drop Point	DP-79	42° 29.273'	-120° 38.991'	
Drop Point	DP-8	42° 41.626'	-120° 49.893'	
Helispot	H-10	42° 43.567'	-120° 46.077'	
Helispot	H-17	42° 40.859'	-120° 44.817'	
Helispot	H-20	42° 41.405'	-120° 40.068'	
Helispot	H-30	42° 40.762'	-120° 36.575'	
Helispot	H-35	42° 38.562'	-120° 39.120'	
Helispot	H-40	42° 35.642'	-120° 36.265'	
Helispot	H-50	42° 33.350'	-120° 37.175'	
Helispot	H-60	42° 29.750'	-120° 39.503'	
Helispot	H-70	42° 36.405'	-120° 45.592'	
Helispot	H-80	42° 37.333'	-120° 52.220'	
Incident Command Post	WatsonCreek ICP	42° 41.680'	-120° 32.459'	
Mobile Weather Unit	IRAWS 27	42° 36.810'	-120° 47.353'	
Mobile Weather Unit	IRAWS 28	42° 39.080'	-120° 57.470'	
Repeater	CMD 7	42° 36.860'	-120° 47.364'	
Repeater	CMD 8	42° 51.930'	-120° 50.043'	
Repeater	CMD 9	42° 32.454'	-120° 52.766'	
Snow Weather Unit	Crazyman Snotel	42° 38.285'	-120° 56.899'	
Snow Weather Unit	Summer Rim Snotel	42° 41.742'	-120° 48.095'	
Staging Area	Romeo Staging	42° 32.356'	-120° 41.894'	
Staging Area	Hadley Staging	42° 40.221'	-120° 40.281'	
Water Source	Unnamed	42° 43.244'	-120° 40.221'	
Water Source	Unnamed	42° 41.801'	-120° 43.478'	
Water Tank	Coffeepot Heliwell	42° 33.145'	-120° 37.067'	



◆ Dip Site	Wx Mobile Weather Unit (Snotel)	⌘ Division Break	— Uncontrolled Fire Edge	— Road as Completed Line	🔴 Wildfire Daily Fire Perimeter
⊕ Water Source	Ⓡ Repeater	⌘ Branch Break	— Completed Line	— Primary Control Line	🔵 TFR 8_3065
● Drop Point	Ⓢ Staging Area		⊘ Completed Dozer Line	— Unknown	
⊙ Helispot	Ⓣ Water Tank		— Completed Hand Line		
● Spot Fire					
📍 Incident Command Post					



NW INT 6
8/27/2018 11:23:46 PM