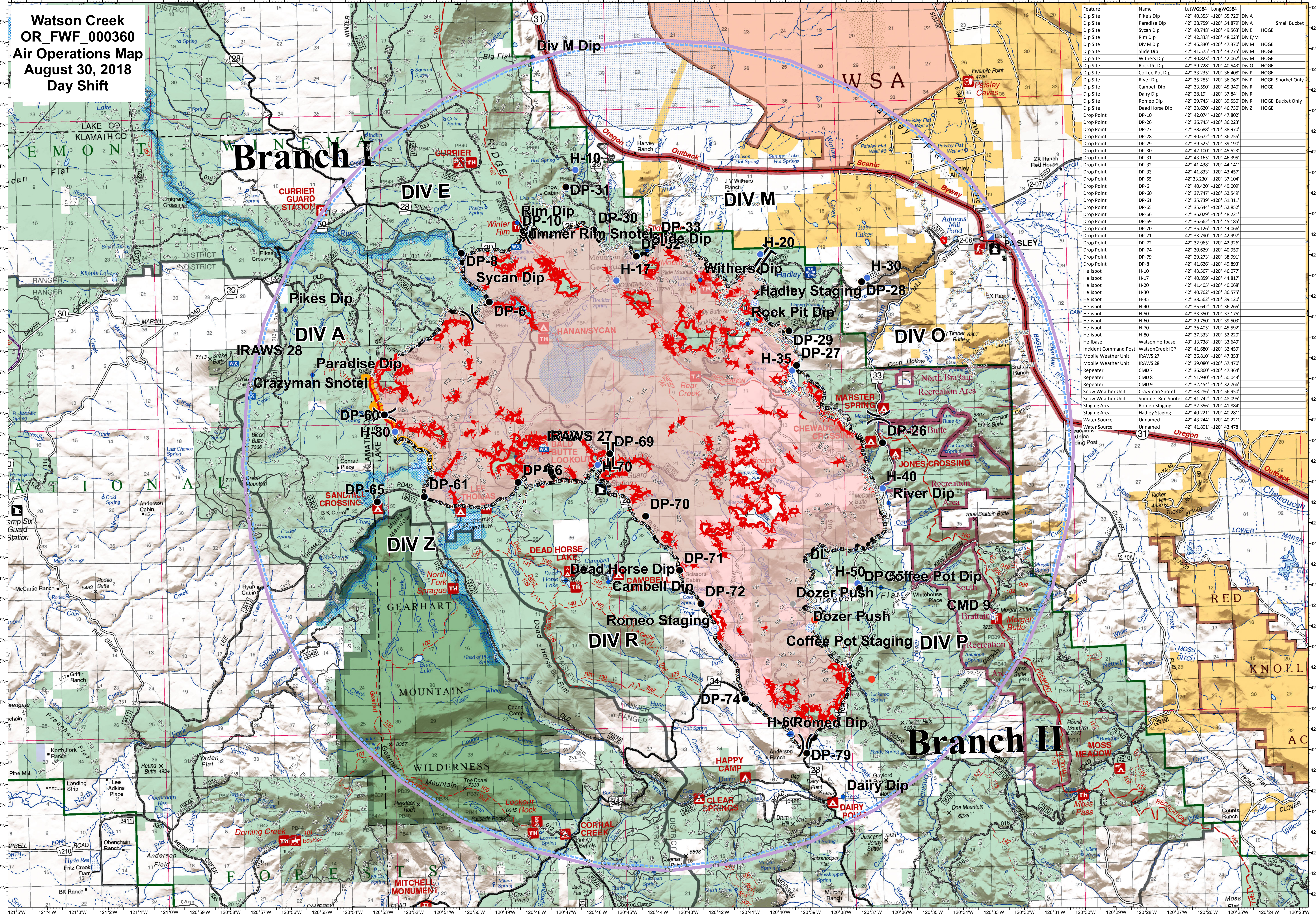


**Watson Creek
OR_FW_000360
Air Operations Map
August 30, 2018
Day Shift**



| Feature | Name | Lat | Long | Notes |
|-----------------------|-------------------|-------------|--------------|-------------------------|
| Dip Site | Pike's Dip | 42° 46.355' | 120° 55.720' | Div A |
| Dip Site | Paradise Dip | 42° 46.755' | 120° 54.875' | Div A |
| Dip Site | Sycan Dip | 42° 40.748' | 120° 49.563' | Div E HOGE |
| Dip Site | Rim Dip | 42° 42.333' | 120° 48.023' | Div E/M |
| Dip Site | Div M Dip | 42° 46.330' | 120° 47.370' | Div M HOGE |
| Dip Site | Slide Dip | 42° 41.575' | 120° 43.775' | Div M HOGE |
| Dip Site | Withers Dip | 42° 40.823' | 120° 42.062' | Div M HOGE |
| Dip Site | Rock Pit Dip | 42° 39.728' | 120° 40.543' | Div O HOGE |
| Dip Site | Coffee Pot Dip | 42° 33.235' | 120° 36.408' | Div P HOGE |
| Dip Site | River Dip | 42° 35.285' | 120° 36.067' | Div P HOGE Snorkel Only |
| Dip Site | Cambell Dip | 42° 33.550' | 120° 45.340' | Div R HOGE |
| Dip Site | Dairy Dip | 42° 28.19' | 120° 37.84' | Div R HOGE |
| Dip Site | Romeo Dip | 42° 29.745' | 120° 39.550' | Div R HOGE Bucket Only |
| Dip Site | Dead Horse Dip | 42° 33.620' | 120° 46.730' | Div Z HOGE |
| Drop Point | DP-10 | 42° 42.074' | 120° 47.802' | |
| Drop Point | DP-26 | 42° 36.745' | 120° 36.223' | |
| Drop Point | DP-27 | 42° 38.888' | 120° 38.970' | |
| Drop Point | DP-28 | 42° 40.672' | 120° 36.755' | |
| Drop Point | DP-29 | 42° 39.525' | 120° 39.190' | |
| Drop Point | DP-30 | 42° 42.100' | 120° 45.523' | |
| Drop Point | DP-31 | 42° 43.165' | 120° 46.935' | |
| Drop Point | DP-32 | 42° 41.438' | 120° 44.141' | |
| Drop Point | DP-33 | 42° 41.833' | 120° 43.457' | |
| Drop Point | DP-55 | 42° 33.230' | 120° 37.104' | |
| Drop Point | DP-6 | 42° 40.420' | 120° 49.009' | |
| Drop Point | DP-60 | 42° 37.747' | 120° 52.549' | |
| Drop Point | DP-61 | 42° 35.739' | 120° 51.311' | |
| Drop Point | DP-65 | 42° 35.644' | 120° 52.852' | |
| Drop Point | DP-66 | 42° 36.029' | 120° 48.221' | |
| Drop Point | DP-69 | 42° 36.662' | 120° 45.185' | |
| Drop Point | DP-70 | 42° 37.125' | 120° 44.065' | |
| Drop Point | DP-71 | 42° 33.790' | 120° 42.907' | |
| Drop Point | DP-72 | 42° 32.965' | 120° 42.326' | |
| Drop Point | DP-74 | 42° 30.629' | 120° 40.950' | |
| Drop Point | DP-79 | 42° 29.273' | 120° 38.991' | |
| Drop Point | DP-8 | 42° 41.626' | 120° 49.893' | |
| Helispot | H-10 | 42° 41.565' | 120° 46.077' | |
| Helispot | H-17 | 42° 40.859' | 120° 44.817' | |
| Helispot | H-20 | 42° 41.405' | 120° 40.068' | |
| Helispot | H-30 | 42° 40.762' | 120° 36.575' | |
| Helispot | H-35 | 42° 38.562' | 120° 39.120' | |
| Helispot | H-40 | 42° 35.642' | 120° 36.265' | |
| Helispot | H-50 | 42° 33.350' | 120° 37.175' | |
| Helispot | H-60 | 42° 29.750' | 120° 39.503' | |
| Helispot | H-70 | 42° 36.405' | 120° 45.592' | |
| Helispot | H-80 | 42° 37.333' | 120° 52.220' | |
| Helibase | Watson Helibase | 43° 13.738' | 120° 33.649' | |
| Incident Command Post | WatsonCreek ICP | 42° 41.680' | 120° 32.459' | |
| Mobile Weather Unit | IRAWS 27 | 42° 36.810' | 120° 47.353' | |
| Mobile Weather Unit | IRAWS 28 | 42° 39.080' | 120° 57.470' | |
| Repeater | CMD 7 | 42° 36.860' | 120° 47.364' | |
| Repeater | CMD 8 | 42° 51.930' | 120° 50.043' | |
| Repeater | CMD 9 | 42° 32.454' | 120° 32.766' | |
| Snow Weather Unit | Crazyman Snotel | 42° 38.286' | 120° 56.950' | |
| Snow Weather Unit | Summer Rim Snotel | 42° 41.742' | 120° 48.095' | |
| Staging Area | Romeo Staging | 42° 32.356' | 120° 41.884' | |
| Staging Area | Hadley Staging | 42° 40.221' | 120° 40.281' | |
| Water Source | Unnamed | 42° 43.244' | 120° 40.221' | |
| Water Source | Unnamed | 42° 41.801' | 120° 43.478' | |

- Dip Site
- Drop Point
- Helispot
- Spot Fire
- Incident Command Post
- Mobile Weather Unit (Snotel)
- Repeater
- Staging Area
- Other
- Division Break
- Uncontrolled Fire Edge
- Completed Line
- Completed Hand Line
- Road as Completed Line
- Primary Control Line
- Unknown
- Wildfire Daily Fire Perimeter
- TFR 8_3065

