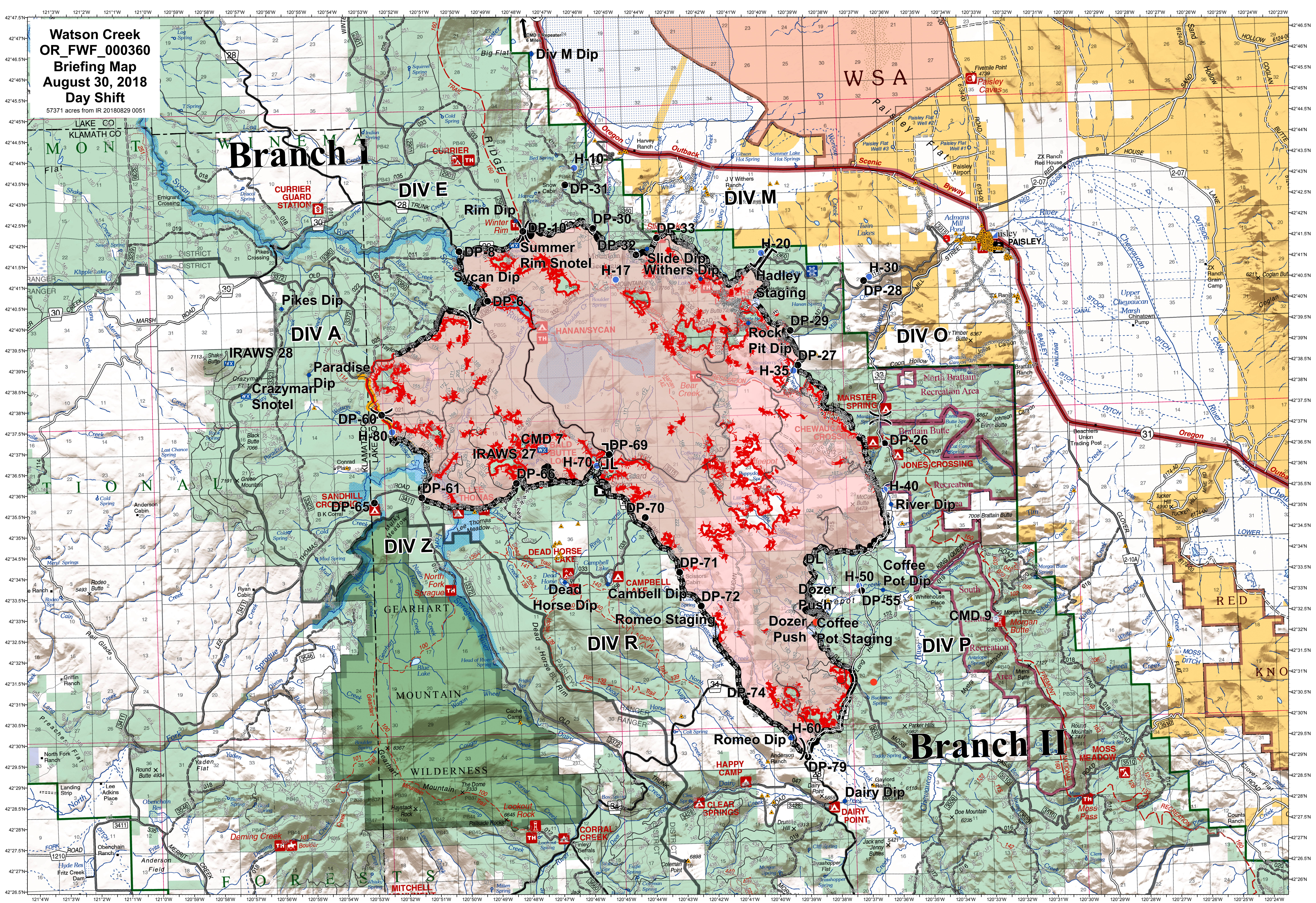


**Watson Creek
OR_FW_000360
Briefing Map
August 30, 2018
Day Shift**
57371 acres from IR 2018029 0051

Branch I

Branch II



- ▲ Structures
- ▲ Dip Site
- Drop Point
- Helispot
- Spot Fire
- Incident Command Post
- Mx Mobile Weather Unit (Snotel)
- R Repeater
- S Staging Area
- Other
- Division Break
- Completed Line
- Completed Dozer Line
- Completed Hand Line
- Uncontrolled Fire Edge
- Road as Completed Line
- Primary Control Line
- Unknown

0 0.5 1 2 3 4 Miles

Datum NAD 83
NW MT 6
8/29/2018 9:41:08 PM