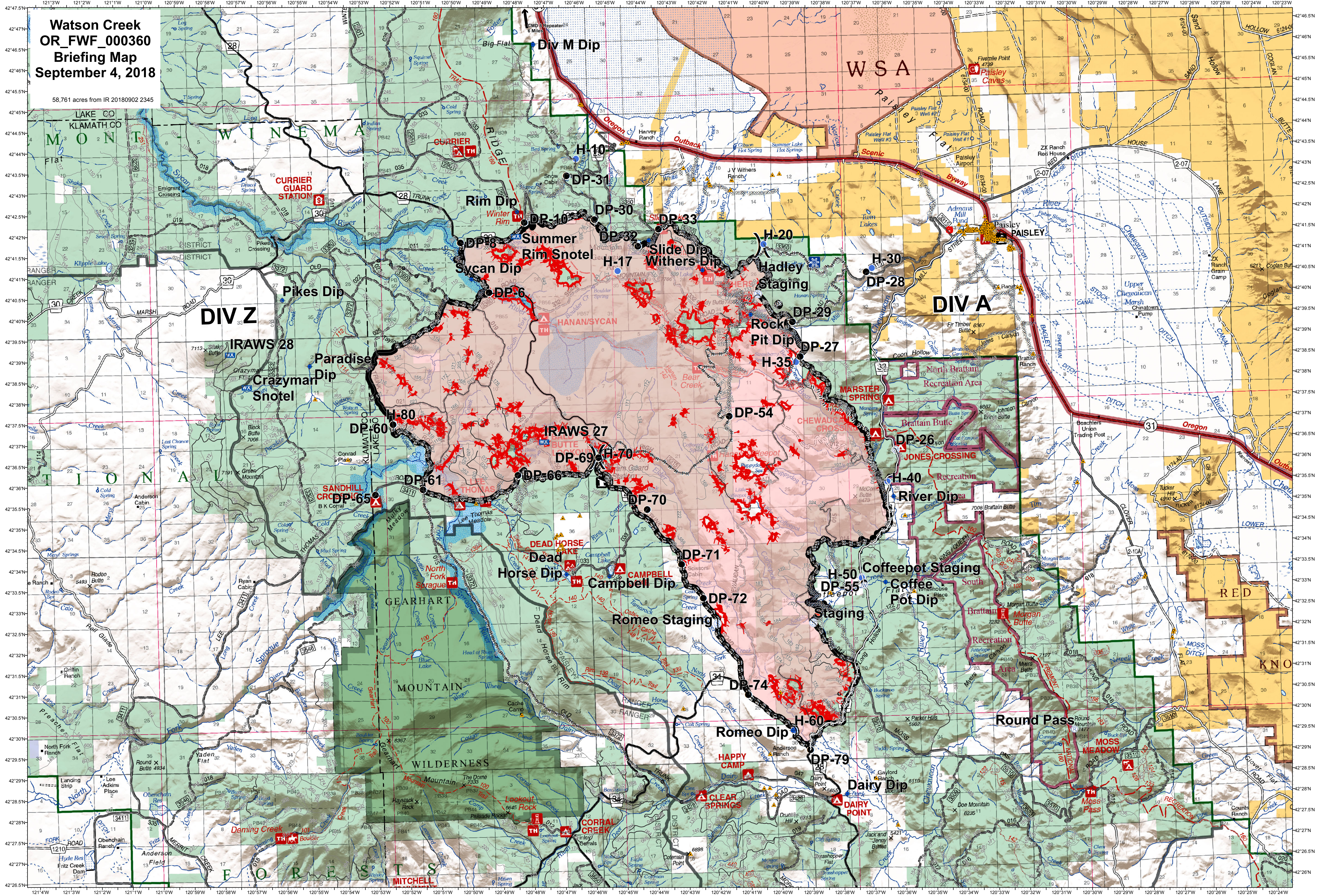
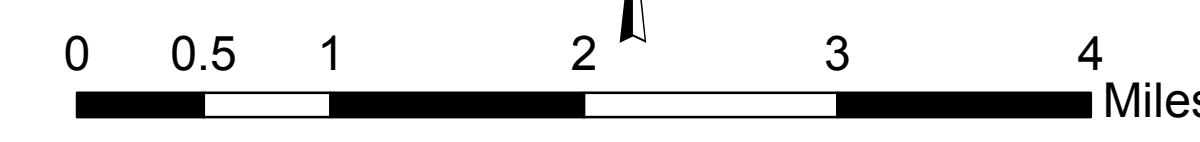


**Watson Creek
OR_FW_000360
Briefing Map
September 4, 2018**

58,761 acres from IR 20180902 2345



- ▲ Structures
- Dip Site
- ⊕ Water Source
- Drop Point
- Helispot
- Spot Fire
- ⊕ Mobile Weather Unit (Snotel)
- ⊕ Repeater
- ⊕ Staging Area
- ⊕ Division Break
- Uncontrolled Fire Edge
- Completed Line
- Completed Dozer Line
- Completed Hand Line
- Road as Completed Line
- Other



Datum NAD 83
NW INT 6
9/3/2018 8:51:59 PM