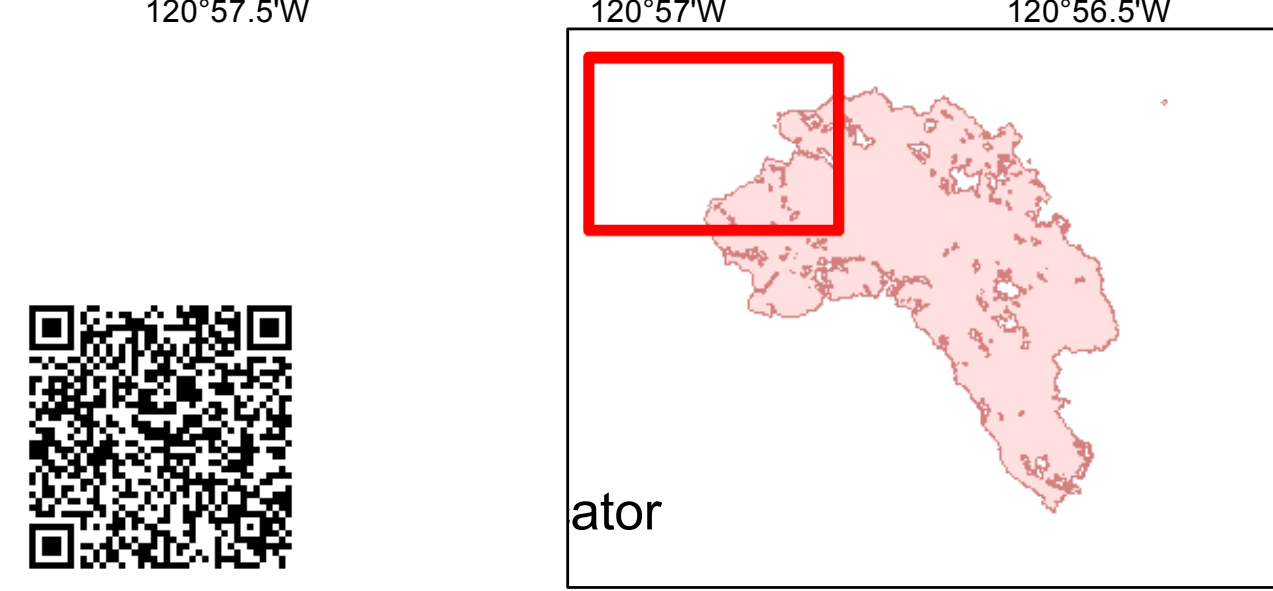
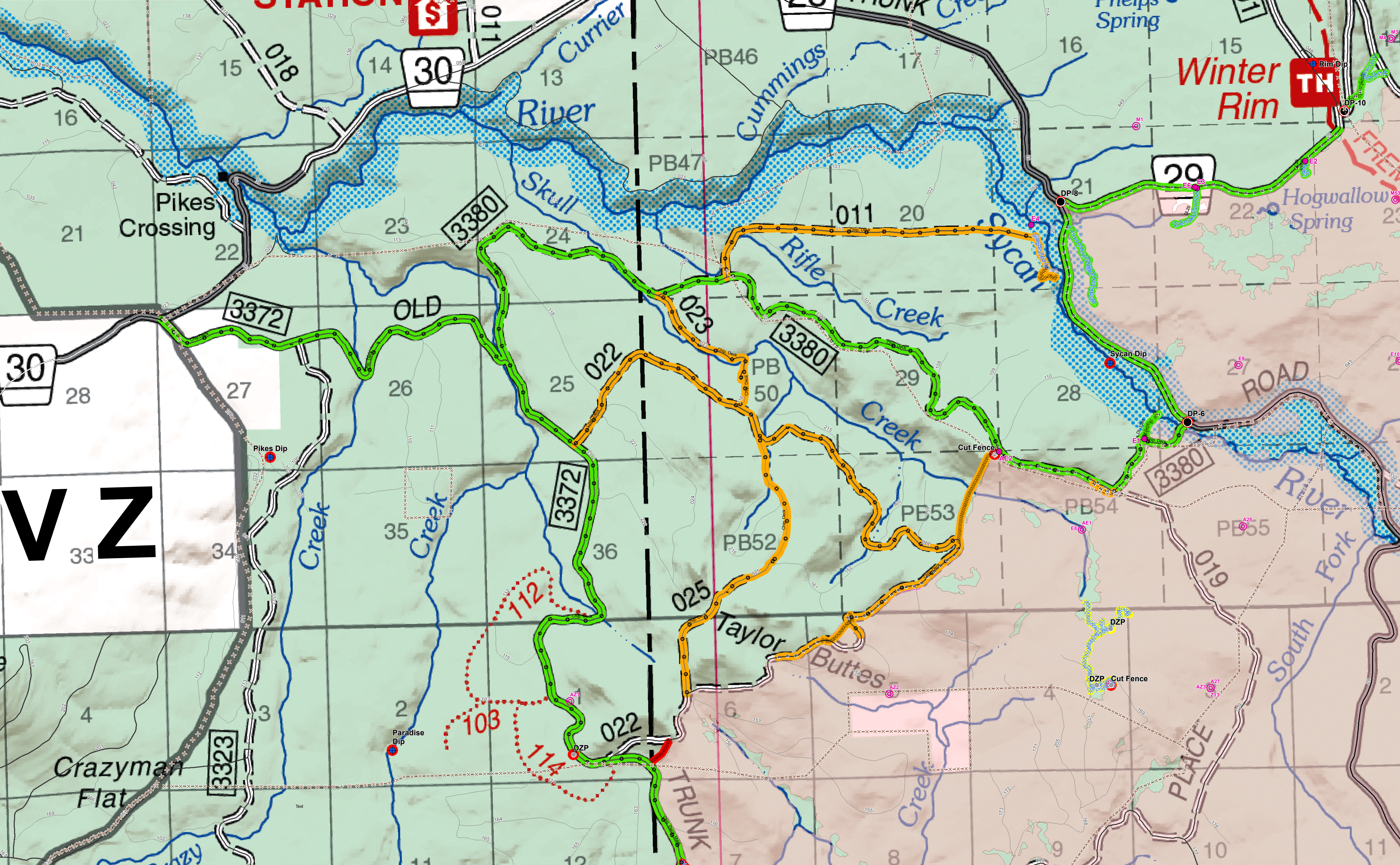


Watson Creek
 OR_FWF_000360
 Suppression Repair Status
 September 6, 2018
 Northwest

CURRIER GUARD STATION



◆ Dip Site	● Drop Point	● Other-Repair Point	--- Completed Hand Line	○ Other	Repair Status Point	Repair Status Line	● READ feature point
			--- Road as Completed Line	--- Dozer Control Line	● In Progress (2)	--- Completed - Inspected	○ READ Approx. feature point
				--- Dozer - Exterior Line	● Repair Needed (11)	--- Completed - Ready for Inspection	
				--- FENCE	● Unknown (1)	--- In Progress	
						--- Repair Needed	
						--- Unknown	

