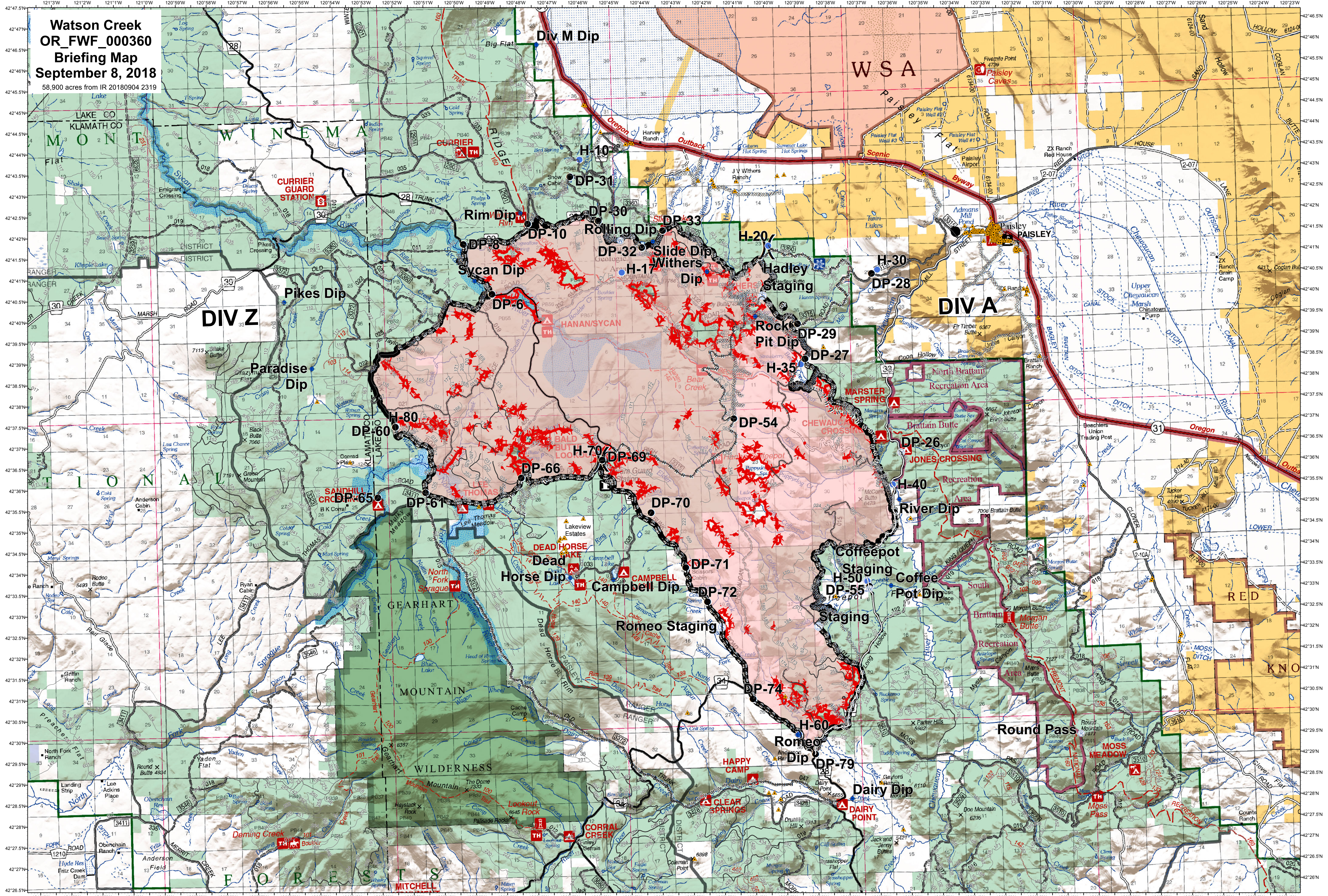


**Watson Creek
OR_FW_000360
Briefing Map
September 8, 2018**
58,900 acres from IR 20180904 2319



- ▲ Structures
- Helispot
- ◆ Dip Site
- ⊕ Water Source
- Drop Point
- Ⓡ Repeater
- Ⓢ Staging Area
- Division Break
- Completed Line
- Completed Dozer Line
- Completed Hand Line
- Road as Completed Line
- Other
- Uncontrolled Fire Edge

