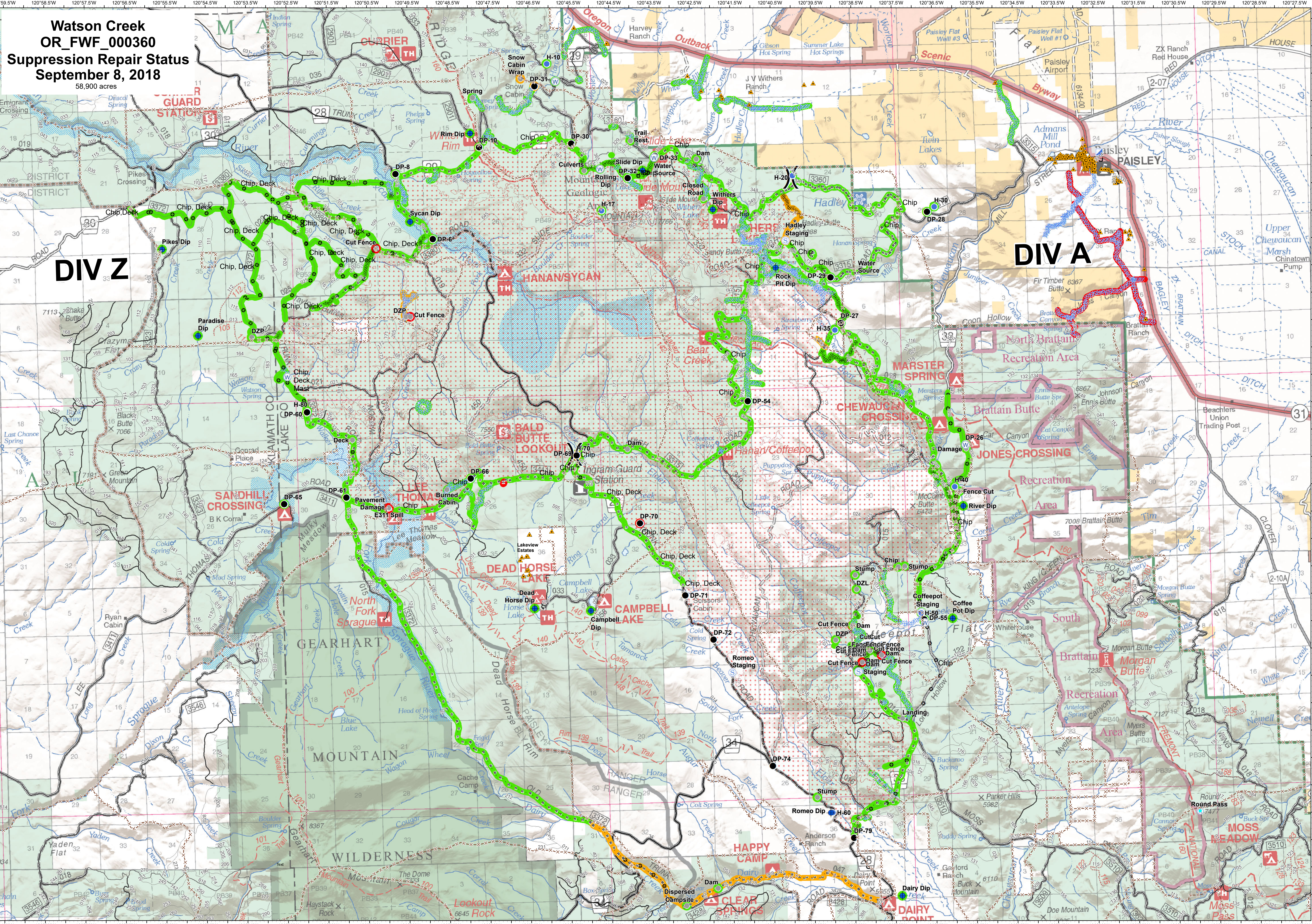


**Watson Creek
OR_FWF_000360
Suppression Repair Status
September 8, 2018**
58,900 acres



▲ Structures	● Helispot	○ Other	— H - H Completed Hand Line	○ Other	▨ Dozer Control Line
◆ Dip Site	● Incident Command Post	⌋ Division Break	— R - R Road as Completed Line	— X - X FENCE	▨ Dozer - Exterior Line
Ⓜ Water Source	Ⓜ Repeater	Ⓜ Staging Area	● Drop Point	● Repair Status Point	● Repair Status Line
● Wildfire Daily Fire Perimeter				● Completed - Inspected	● Completed - Inspected
				● Completed - Ready for Inspection	● Completed - Ready for Inspection
				● Repair Needed	● Repair Needed
				○ No Repair Needed	○ No Repair Needed



Datum NAD 83
NW 1/4 6
9/7/2018 9:57:21 PM