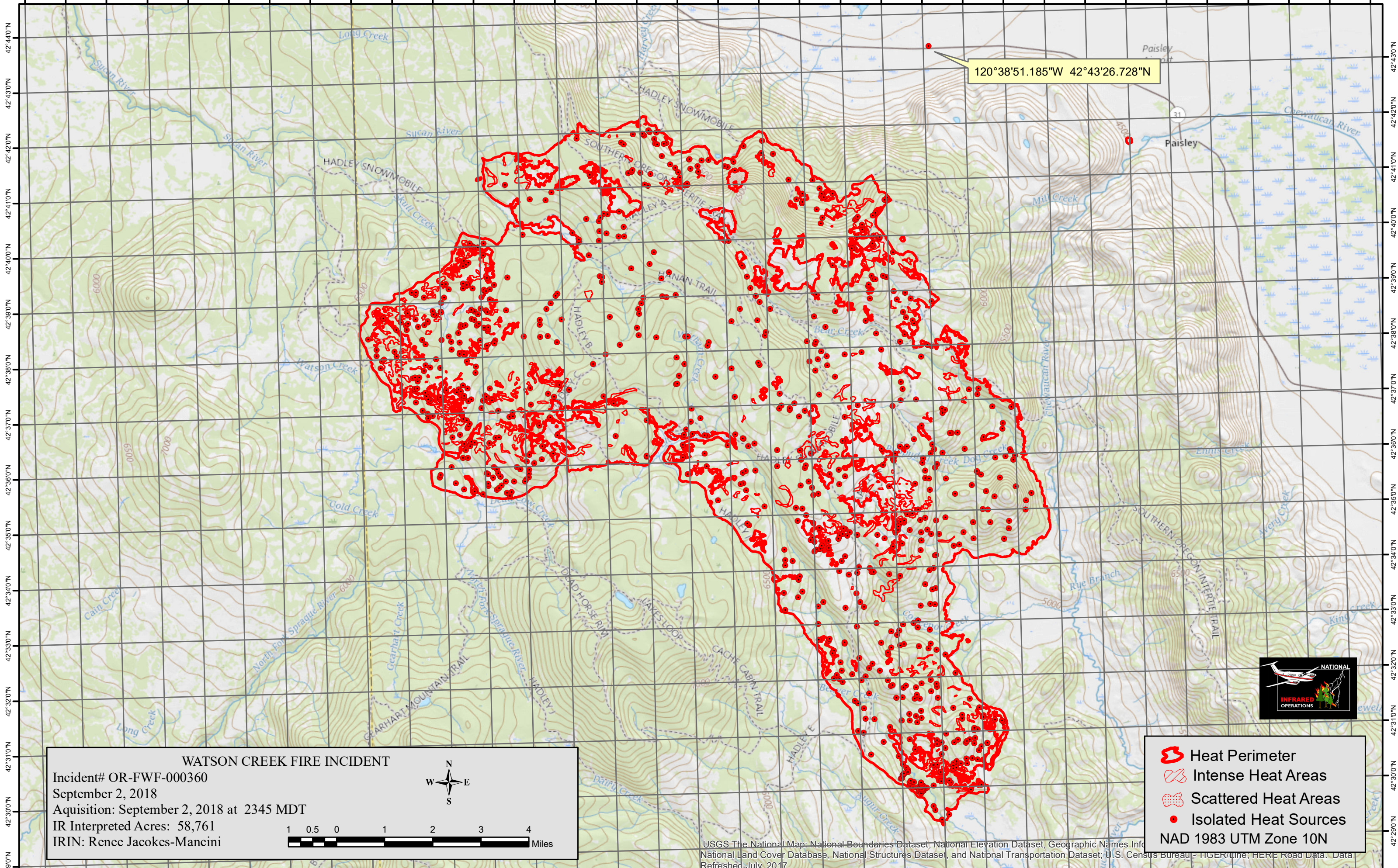
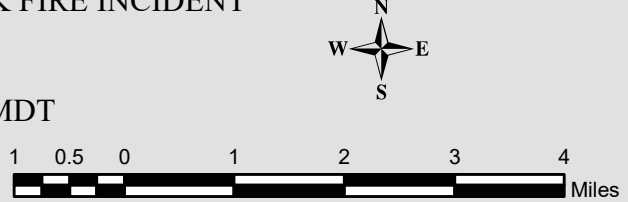






121°10'W 121°00'W 120°59'0"W 120°58'0"W 120°57'0"W 120°56'0"W 120°55'0"W 120°54'0"W 120°53'0"W 120°52'0"W 120°51'0"W 120°50'0"W 120°49'0"W 120°48'0"W 120°47'0"W 120°46'0"W 120°45'0"W 120°44'0"W 120°43'0"W 120°42'0"W 120°41'0"W 120°40'0"W 120°39'0"W 120°38'0"W 120°37'0"W 120°36'0"W 120°35'0"W 120°34'0"W 120°33'0"W 120°32'0"W 120°31'0"W 120°30'0"W 120°29'0"W 120°28'0"W



120°38'51.185"W 42°43'26.728"N

WATSON CREEK FIRE INCIDENT
 Incident# OR-FWF-000360
 September 2, 2018
 Acquisition: September 2, 2018 at 2345 MDT
 IR Interpreted Acres: 58,761
 IRIN: Renee Jacokes-Mancini



-  Heat Perimeter
-  Intense Heat Areas
-  Scattered Heat Areas
-  Isolated Heat Sources

NAD 1983 UTM Zone 10N



USGS The National Map: National Boundaries Dataset, National Elevation Dataset, Geographic Names Information System, National Land Cover Database, National Structures Dataset, and National Transportation Dataset; U.S. Census Bureau - TIGER/Line; HERE Road Data. Data Refreshed July, 2017.

121°10'W 121°00'W 120°59'0"W 120°58'0"W 120°57'0"W 120°56'0"W 120°55'0"W 120°54'0"W 120°53'0"W 120°52'0"W 120°51'0"W 120°50'0"W 120°49'0"W 120°48'0"W 120°47'0"W 120°46'0"W 120°45'0"W 120°44'0"W 120°43'0"W 120°42'0"W 120°41'0"W 120°40'0"W 120°39'0"W 120°38'0"W 120°37'0"W 120°36'0"W 120°35'0"W 120°34'0"W 120°33'0"W 120°32'0"W 120°31'0"W 120°30'0"W 120°29'0"W