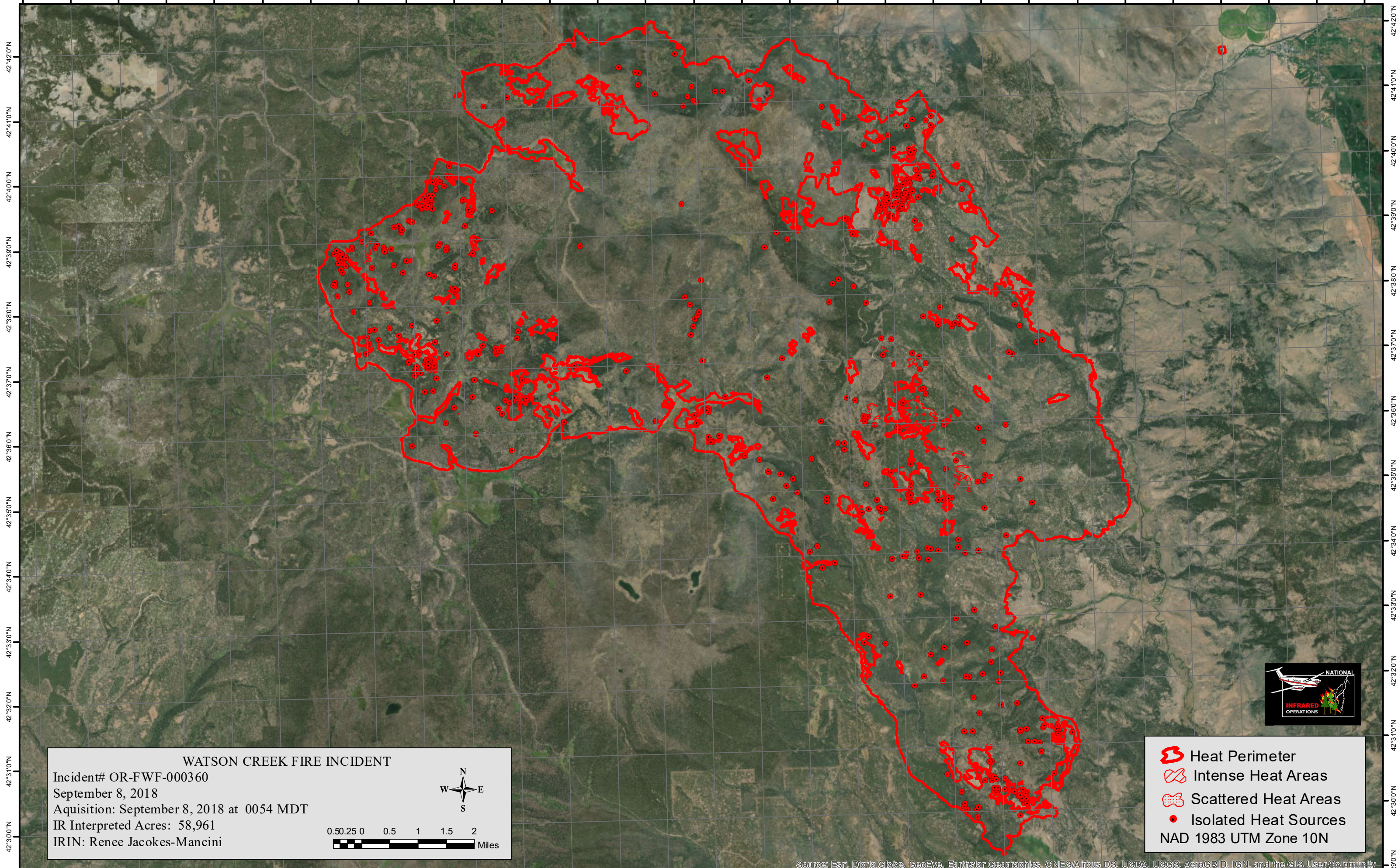


120°59'0"W 120°58'0"W 120°57'0"W 120°56'0"W 120°55'0"W 120°54'0"W 120°53'0"W 120°52'0"W 120°51'0"W 120°50'0"W 120°49'0"W 120°48'0"W 120°47'0"W 120°46'0"W 120°45'0"W 120°44'0"W 120°43'0"W 120°42'0"W 120°41'0"W 120°40'0"W 120°39'0"W 120°38'0"W 120°37'0"W 120°36'0"W 120°35'0"W 120°34'0"W 120°33'0"W 120°32'0"W 120°31'0"W







42°42'0"N
42°41'0"N
42°40'0"N
42°39'0"N
42°38'0"N
42°37'0"N
42°36'0"N
42°35'0"N
42°34'0"N
42°33'0"N
42°32'0"N
42°31'0"N
42°30'0"N

42°42'0"N
42°41'0"N
42°40'0"N
42°39'0"N
42°38'0"N
42°37'0"N
42°36'0"N
42°35'0"N
42°34'0"N
42°33'0"N
42°32'0"N
42°31'0"N
42°30'0"N

WATSON CREEK FIRE INCIDENT
Incident# OR-FWF-000360
September 8, 2018
Acquisition: September 8, 2018 at 0054 MDT
IR Interpreted Acres: 58,961
IRIN: Renee Jacokes-Mancini



-  Heat Perimeter
 -  Intense Heat Areas
 -  Scattered Heat Areas
 -  Isolated Heat Sources
- NAD 1983 UTM Zone 10N



Sources: Esri, DigitalGlobe, GeoEye, Earthstar Geographics, CNES/Airbus DS, USDA, USGS, AeroGRID, IGN, and the GIS User Community