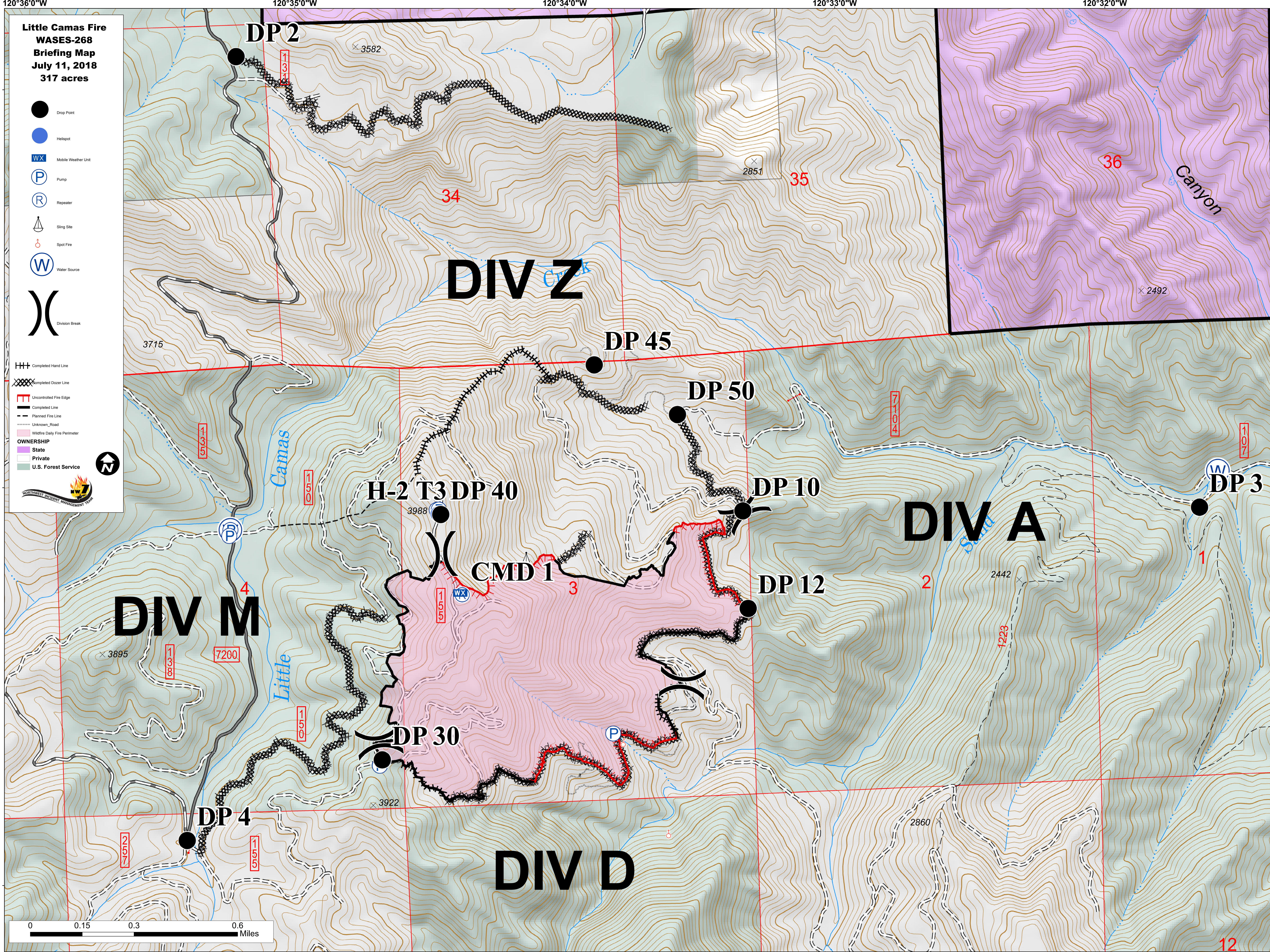
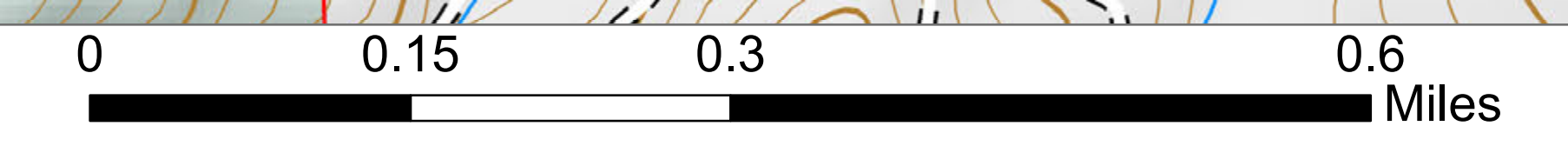
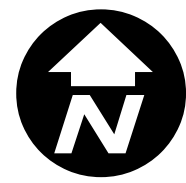


**Little Camas Fire
WASES-268
Briefing Map
July 11, 2018
317 acres**

- Drop Point
- Helispot
- WX Mobile Weather Unit
- P Pump
- R Repeater
- △ Sling Site
- ⊕ Spot Fire
- W Water Source
- () Division Break

- Completed Hand Line
- Completed Dozer Line
- Uncontrolled Fire Edge
- Completed Line
- Planned Fire Line
- Unknown Road
- Wildfire Daily Fire Perimeter

- OWNERSHIP**
- State
 - Private
 - U.S. Forest Service



120°36'0"W

120°35'0"W

120°34'0"W

120°33'0"W

120°32'0"W

47°27'0"N

47°26'0"N

47°25'0"N

120°36'0"W

120°35'0"W

120°34'0"W

120°33'0"W

120°32'0"W

12