

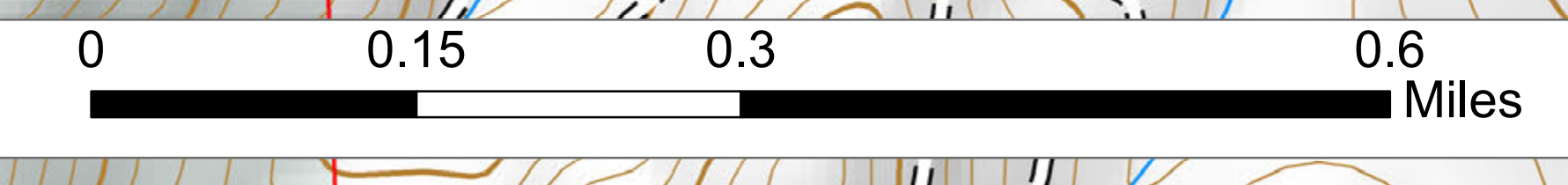
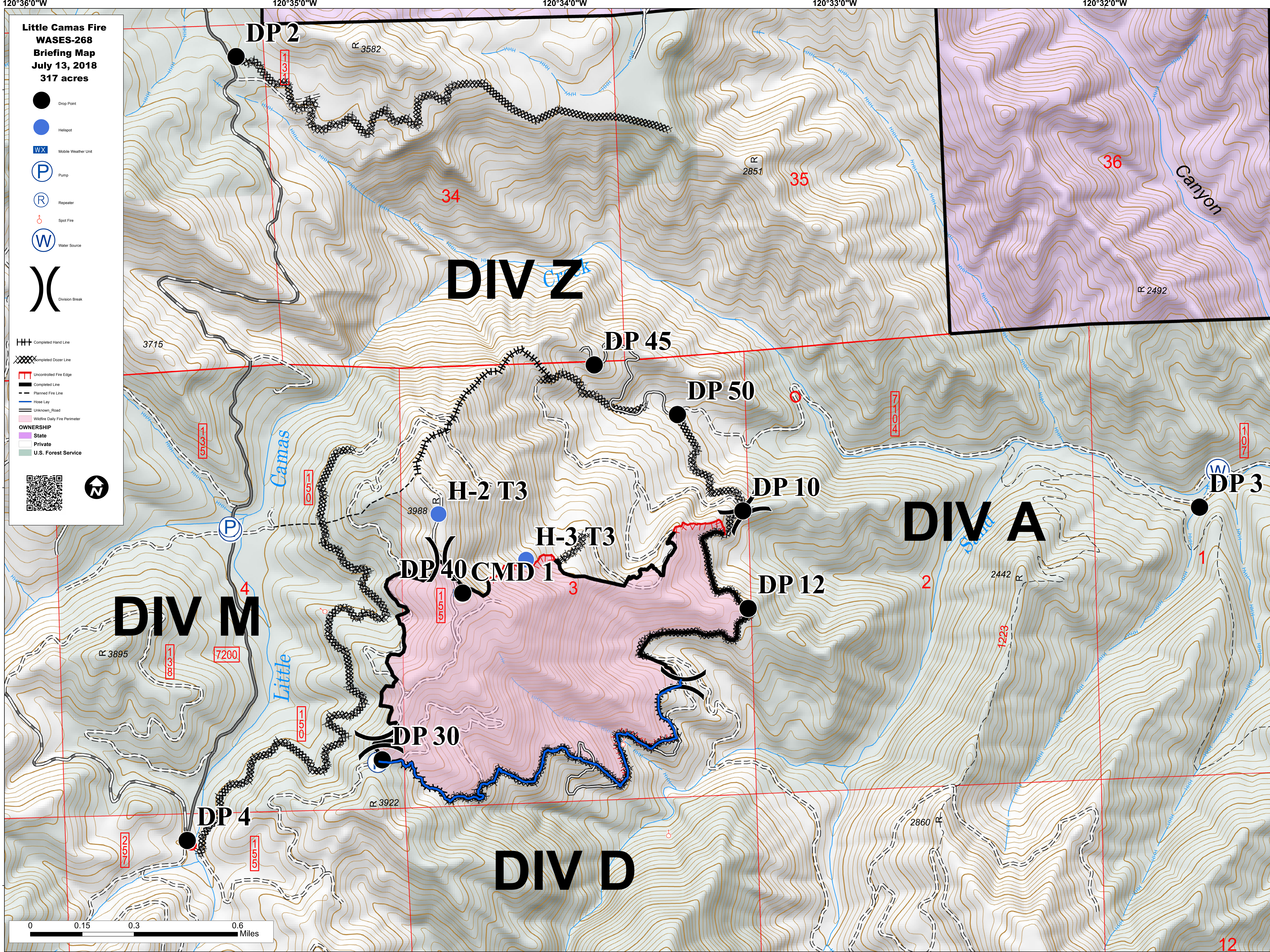
**Little Camas Fire
WASES-268
Briefing Map
July 13, 2018
317 acres**

- Drop Point
- Helispot
- WX Mobile Weather Unit
- P Pump
- R Repeater
- ♂ Spot Fire
- W Water Source
- () Division Break

- HH Completed Hand Line
- XXX Completed Dozer Line
- Uncontrolled Fire Edge
- Completed Line
- Planned Fire Line
- Hose Lay
- Unknown Road
- Wildfire Daily Fire Perimeter

OWNERSHIP

- State
- Private
- U.S. Forest Service



120°36'0"W 120°35'0"W 120°34'0"W 120°33'0"W 120°32'0"W

47°27'0"N 47°26'0"N 47°25'0"N