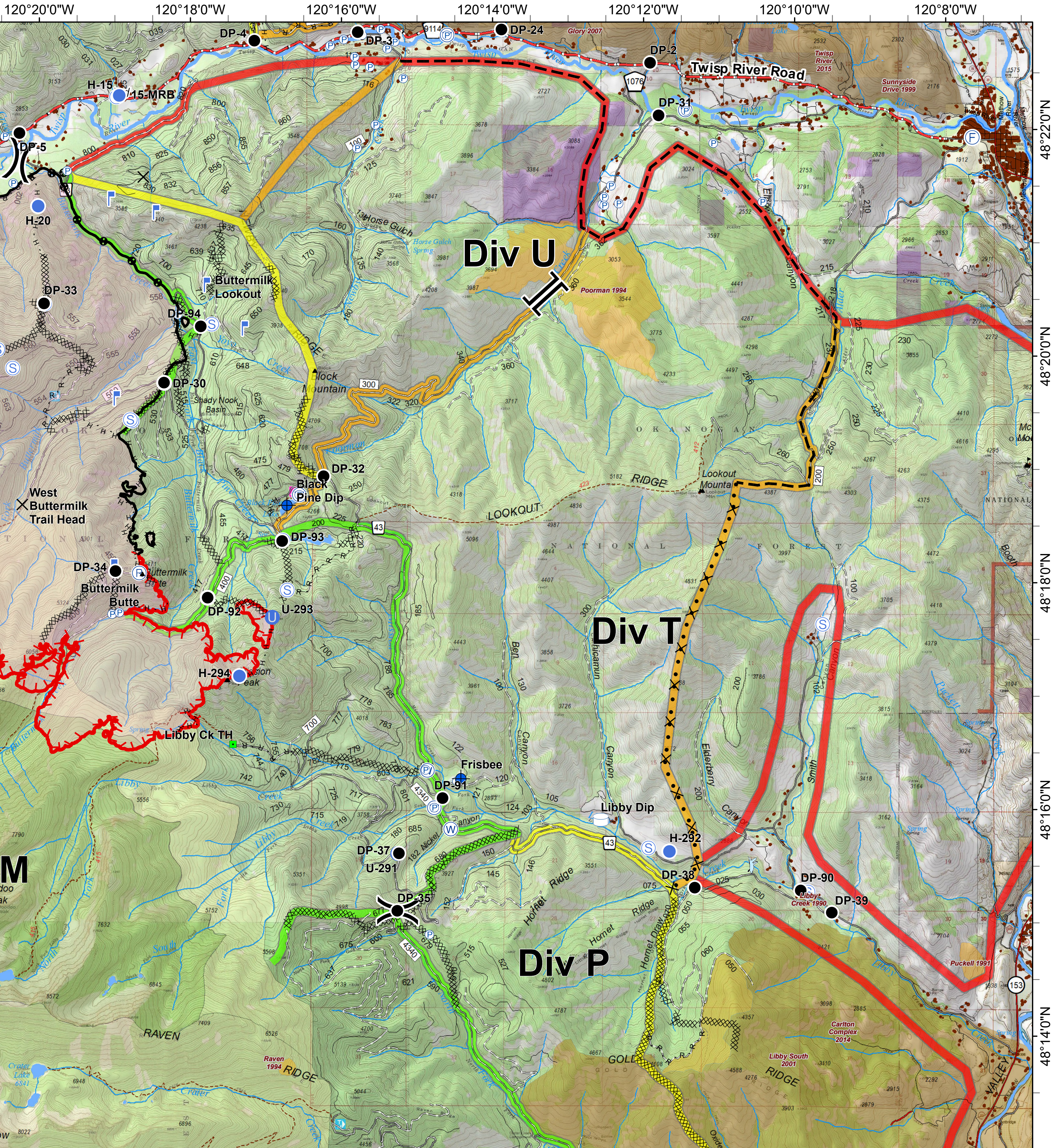
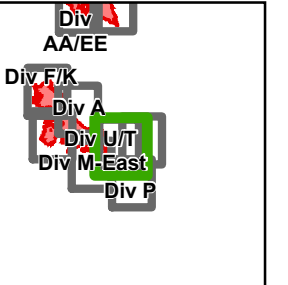




Crescent Mountain

WA-OWF-000422
51,363 Acres



<ul style="list-style-type: none"> ✕ Closure ● Dip Site ● Drop Point ⓕ Fire Station Ⓢ Unimproved Landing Area ● Helispot ■ Landmark 	<ul style="list-style-type: none"> Ⓛ Lookout Ⓟ Pump Ⓡ Repeater Ⓜ Retardant/Mud Pit Ⓢ Staging Area Ⓦ Water Source Ⓢ Water Tank Ⓜ Value at Risk 	<ul style="list-style-type: none"> ⎓ Division Break ⎓ Branch Break — Completed Line ⊗ Completed Dozer Line H - H Completed Hand Line R - R Road as Completed Line ✕ Proposed Dozer Line ⊖ Planned Fire Line ⊕ Other 	<ul style="list-style-type: none"> — Trail — Twisp River Road — Highway — County Roads — Other County Roads — Private/Other Roads — Paved Road — Gravel Road, Suitable for Passenger Car — Dirt Road, Suitable for Passenger Car — Road Not Suitable for Passenger Car — Closed Road — Existing "Unauthorized" Roads — Decommissioned Roads 	<ul style="list-style-type: none"> ■ Structure ■ Wildfire Daily Fire Perimeter ■ PACE: primary ■ PACE: alternate ■ PACE: contingency ■ PACE: emergency 	<p>FIREYEAR</p> <ul style="list-style-type: none"> ■ 1990-1999 ■ 2000-2009 ■ 2010-2014 ■ 2015-2017 ■ Roadless Conservation ■ Wilderness 	<ul style="list-style-type: none"> ■ FS ■ PVT ■ WA Dept of F&W ■ Washington DNR
--	---	--	--	--	--	---

0 0.25 0.5 1 Miles

