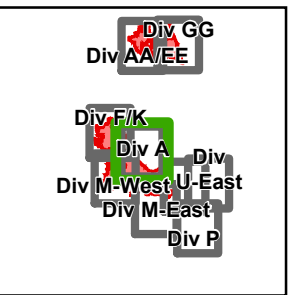


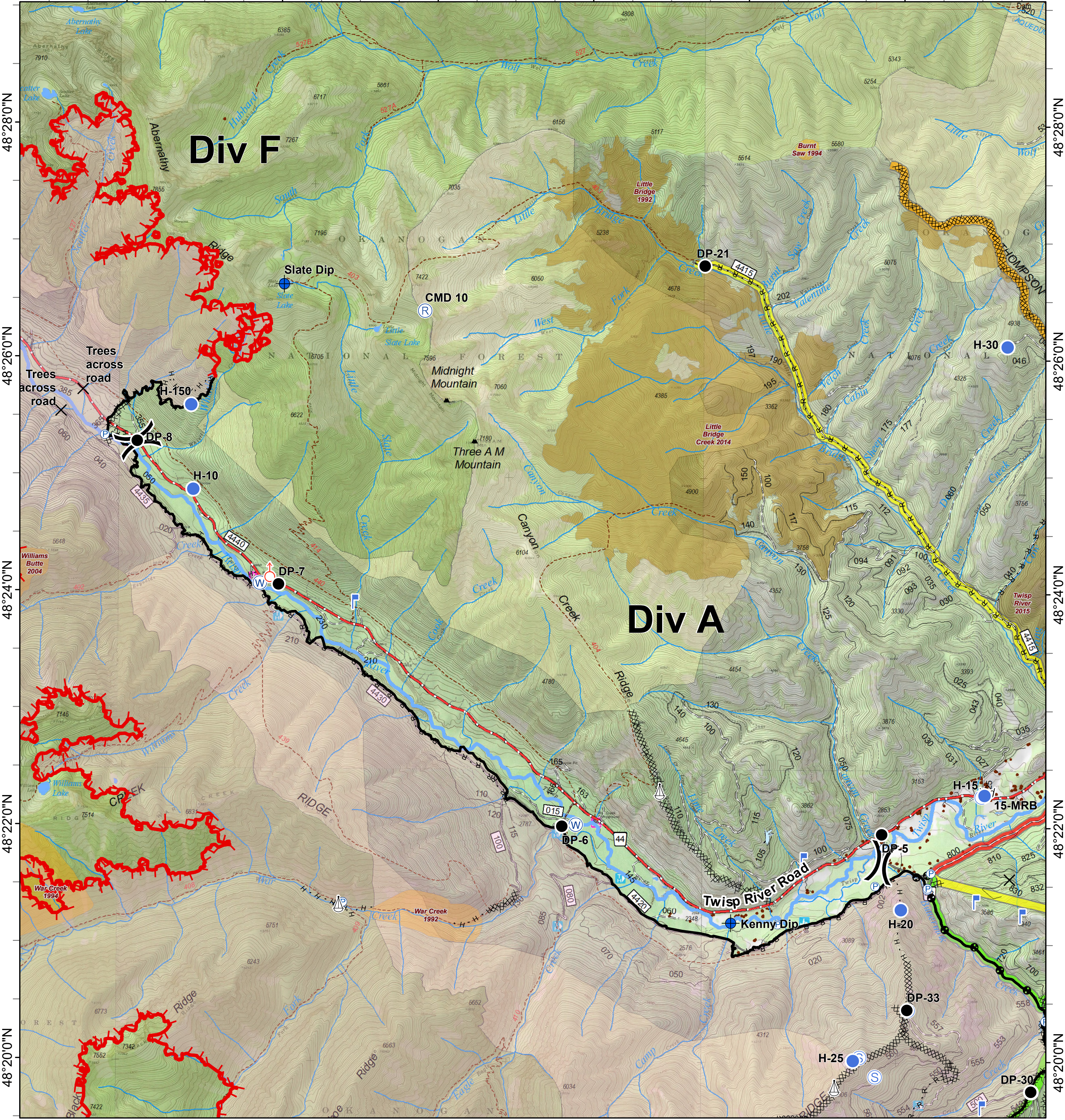


# Crescent Mountain

WA-OWF-000422  
Acres Crescent 51,363 McLeod 22,742



120°30'0"W 120°28'0"W 120°26'0"W 120°24'0"W 120°22'0"W 120°20'0"W



Closure	Repeater	Water Source	Completed Line	Trail	Structure	<b>FIREYEAR</b>	FS
Dip Site	Retardant/Mud Pit	Division Break	Completed Dozer Line	Twisp River Road	Wildfire Daily Fire Perimeter	1990-1999	PVT
Drop Point	Sling Site	H - H Completed Hand Line	County Roads	Other County Roads	PACE: primary	2000-2009	
Helispot	Spot Fire	R - R Road as Completed Line	Paved Road	Gravel Road, Suitable for Passenger Car	PACE: alternate	2010-2014	
Lookout	Staging Area	Other	Dirt Road, Suitable for Passenger Car	Road Not Suitable for Passenger Car	PACE: contingency	2015-2017	
Pump	Uncontrolled Fire Edge		Closed Road	Existing "Unauthorized" Roads	PACE: emergency	Roadless Conservation	
			Decommissioned Roads			Wilderness	

