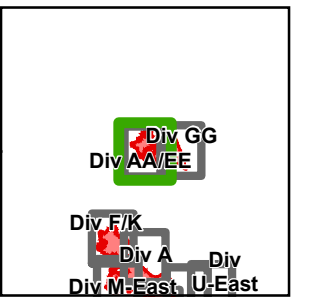


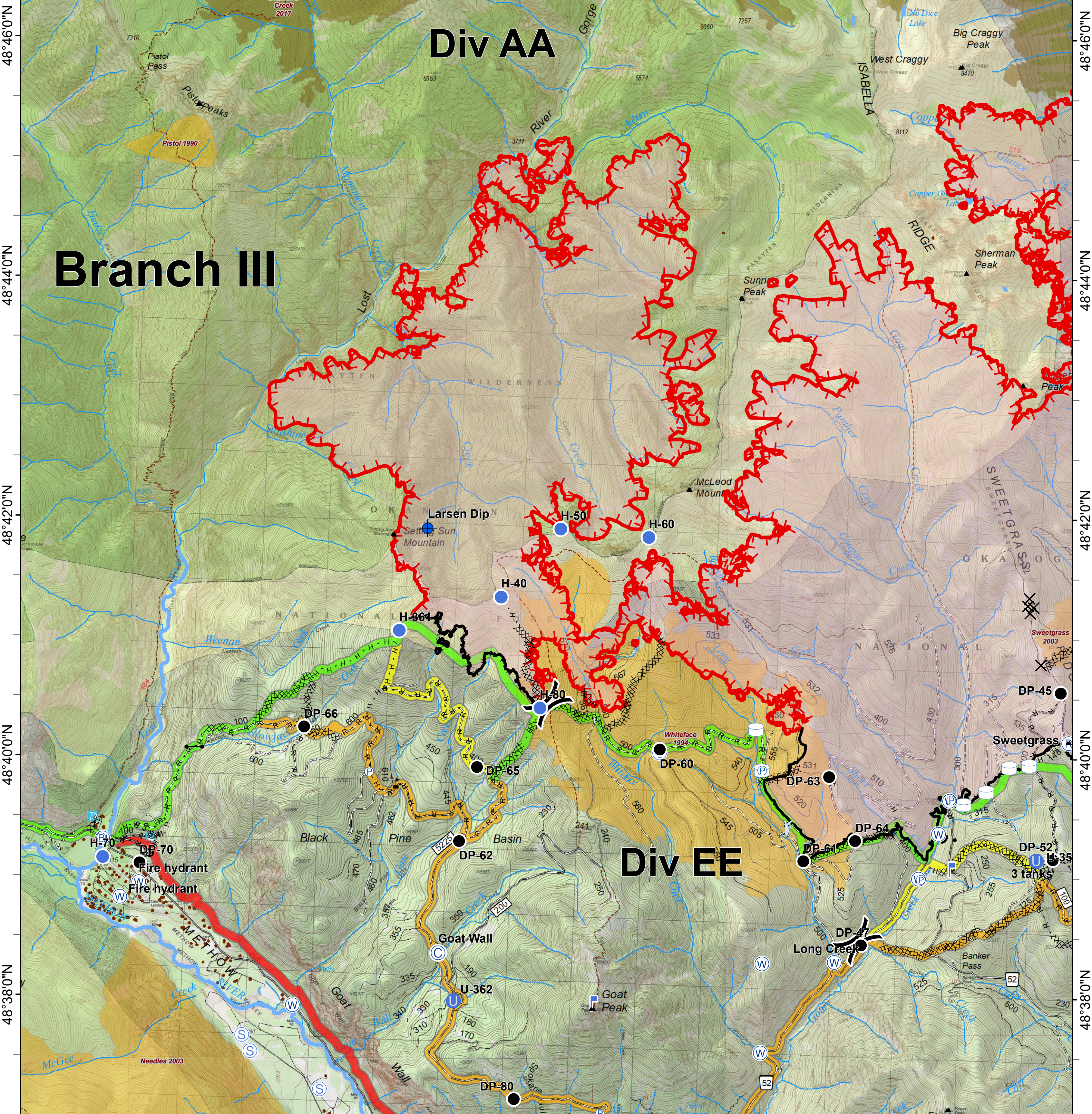


# Crescent Mountain

WA-OWF-000422  
Acres Crescent 51,363 McLeod 22,742



120°30'0"W      120°28'0"W      120°26'0"W      120°24'0"W      120°22'0"W      120°20'0"W



Camp	Helispot	Water Tank	Completed Line	Trail	Structure	<b>FIREYEAR</b>	FS
Closure	Lookout	Value at Risk	Completed Dozer Line	County Roads	Wildfire Daily Fire Perimeter		1990-1999
Dip Site	Pump	Division Break	H - H Completed Hand Line	Other County Roadsd	PACE: primary	2000-2009	WA Dept of F&W
Drop Point	Repeater	Uncontrolled Fire Edge	R - R Road as Completed Line	Gravel Road, Suitable for Passenger Car	PACE: alternate	2015-2017	Roadless Conservation
Gate	Staging Area		Road Not Suitable for Passenger Car	Closed Road	PACE: contingency	Wilderness	
Unimproved Landing Area	Water Source		Existing "Unauthorized" Roads	Decommissioned Roads	PACE: emergency		

