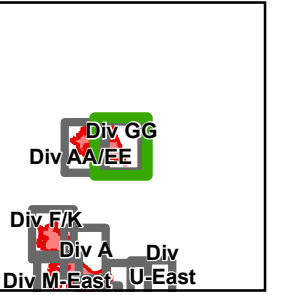


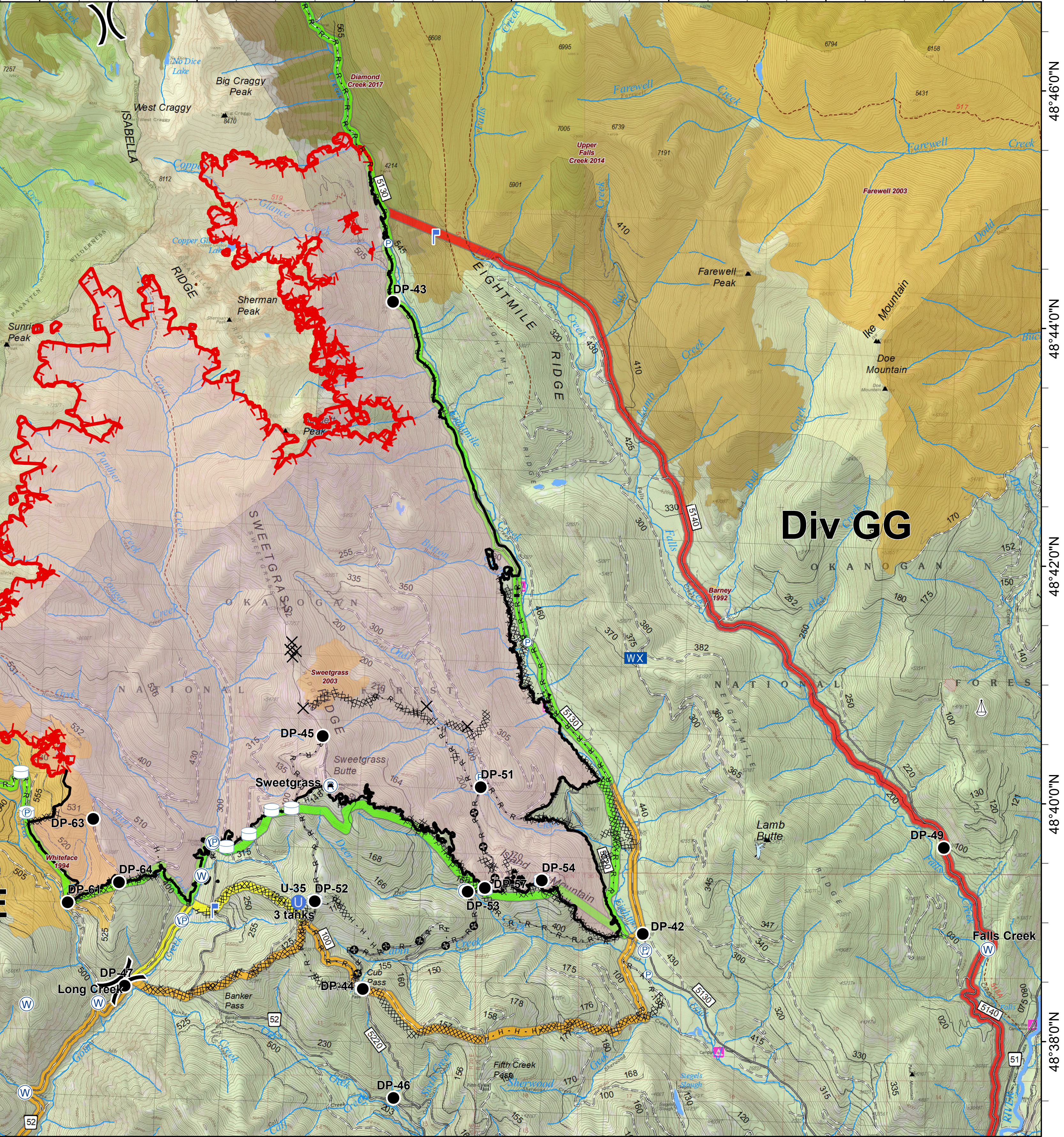


Crescent Mountain

WA-OWF-000422
Acres Crescent 51,363 McLeod 22,742



120°22'0"W 120°20'0"W 120°18'0"W 120°16'0"W 120°14'0"W 120°12'0"W 120°10'0"W



Div GG

0 0.25 0.5 1 Miles

- | | | | | | | | |
|---|--|---|--|--|--|--|---|
| <ul style="list-style-type: none"> ✕ Closure ● Drop Point Ⓛ Unimproved Landing Area Ⓜ Lookout WX Mobile Weather Unit | <ul style="list-style-type: none"> Ⓟ Pump Ⓡ Repeater Ⓢ Sling Site Ⓦ Water Source Ⓜ Water Tank | <ul style="list-style-type: none"> ⚠ Value at Risk Ⓜ Division Break Ⓜ Uncontrolled Fire Edge | <ul style="list-style-type: none"> — Completed Line XXXXX Completed Dozer Line H · H Completed Hand Line R · R Road as Completed Line ⊕ Other | <ul style="list-style-type: none"> - - - Trail — Paved Road — Gravel Road, Suitable for Passenger Car — Dirt Road, Suitable for Passenger Car — Road Not Suitable for Passenger Car — Closed Road - - - Existing "Unauthorized" Roads - - - Decommissioned Roads | <ul style="list-style-type: none"> ■ Structure ■ Wildfire Daily Fire Perimeter ■ PACE: primary ■ PACE: alternate ■ PACE: contingency ■ PACE: emergency | <p>FIREYEAR</p> <ul style="list-style-type: none"> ■ 1990-1999 ■ 2000-2009 ■ 2010-2014 ■ 2015-2017 ■ Roadless Conservation ■ Wilderness | <ul style="list-style-type: none"> ■ FS ■ USFWS ■ WA Dept of F&W |
|---|--|---|--|--|--|--|---|

