

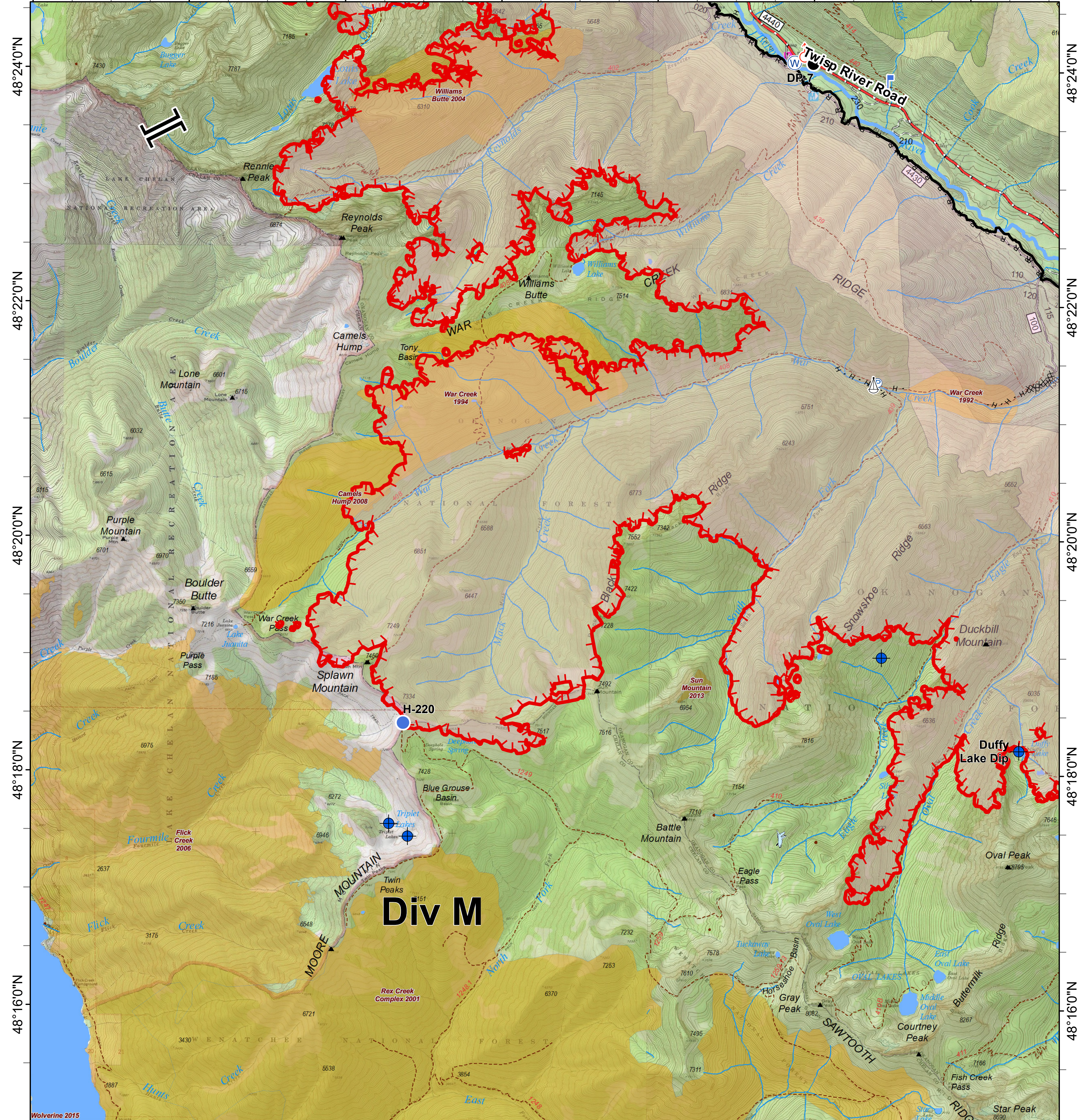


Crescent Mountain

WA-OWF-000422
Acres Crescent 51,363 McLeod 22,742



120°38'0"W 120°36'0"W 120°34'0"W 120°32'0"W 120°30'0"W 120°28'0"W 120°26'0"W



Div M

0 0.25 0.5 1 Miles

- Dip Site
- Drop Point
- Helispot
- Lookout
- Pump
- Sling Site
- Spot Fire
- Water Source
- Branch Break
- Uncontrolled Fire Edge

- Completed Line
- Completed Dozer Line
- H - H Completed Hand Line
- R - R Road as Completed Line
- Trail
- Twisp River Road
- Paved Road
- Gravel Road, Suitable for Passenger Car
- Dirt Road, Suitable for Passenger Car
- Road Not Suitable for Passenger Car
- Closed Road
- Existing "Unauthorized" Roads
- Decommissioned Roads

- Structure
 - Wildfire Daily Fire Perimeter
- FIREYEAR**
- 1990-1999
 - 2000-2009
 - 2010-2014
 - 2015-2017
 - Roadless Conservation
 - Wilderness

- FS
- NPS
- PVT

