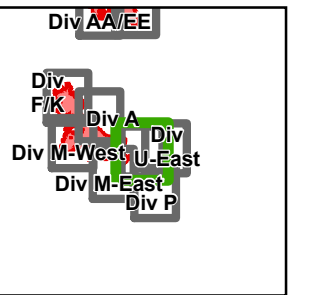


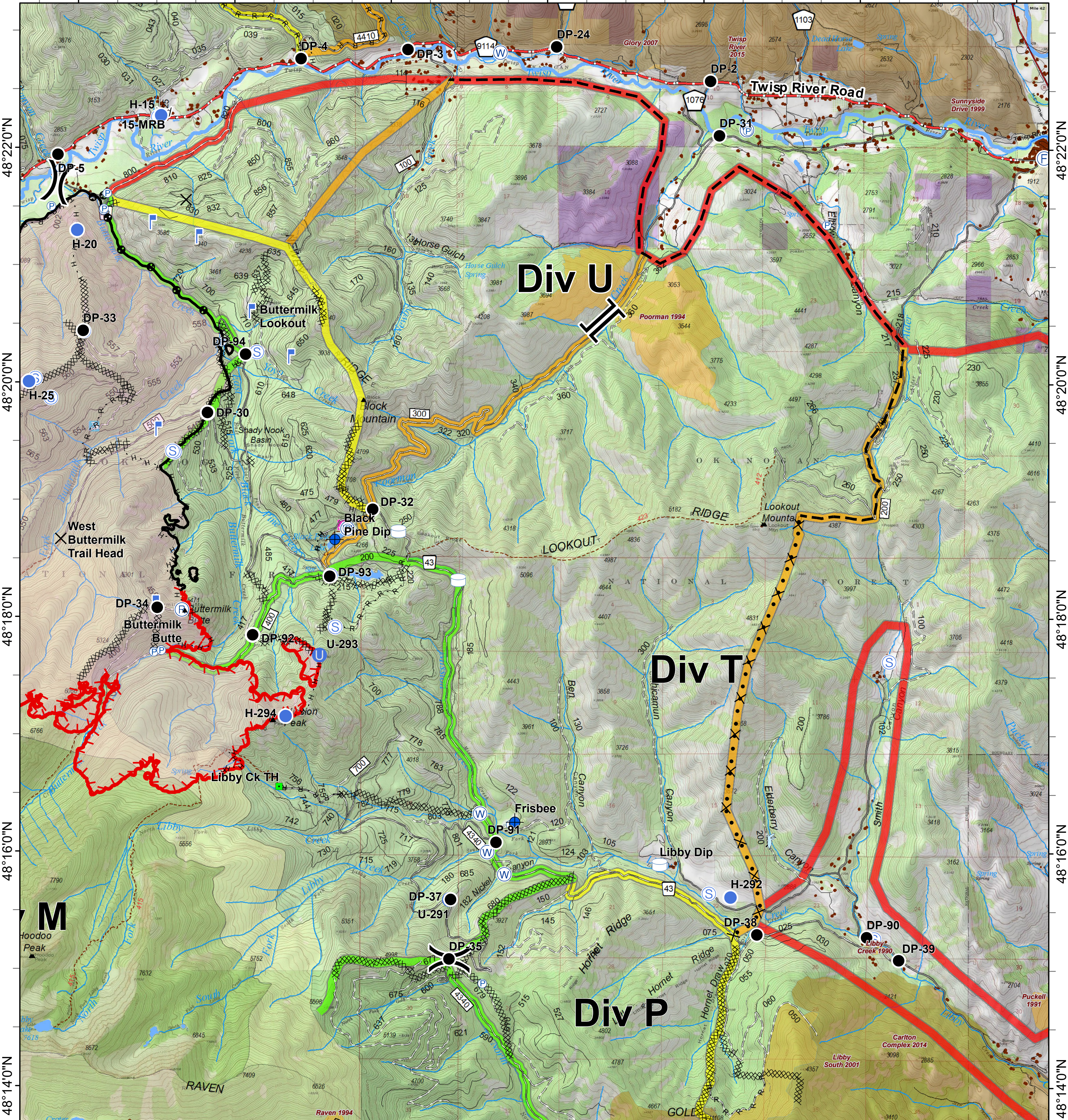


Crescent Mountain

WA-OWF-000422
Acres Crescent 51,363 McLeod 22,742



120°20'0"W 120°18'0"W 120°16'0"W 120°14'0"W 120°12'0"W 120°10'0"W 120°8'0"W



<ul style="list-style-type: none"> X Closure ● Dip Site ● Drop Point ⊕ Fire Station ⊕ Unimproved Landing Area ⊕ Helispot ■ Landmark 	<ul style="list-style-type: none"> ⊕ Lookout ⊕ Pump ⊕ Repeater ⊕ Retardant/Mud Pit ⊕ Staging Area ⊕ Water Source ⊕ Water Tank 	<ul style="list-style-type: none"> ⊕ Division Break ⊕ Branch Break — Completed Line ⊕ Completed Dozer Line H - H Completed Hand Line R - R Road as Completed Line ⊕ Proposed Dozer Line ⊕ Planned Fire Line ⊕ Other 	<ul style="list-style-type: none"> ⊕ Trail ⊕ Twisp River Road ⊕ Highway ⊕ County Roads ⊕ Other County Roads ⊕ Paved Road ⊕ Gravel Road, Suitable for Passenger Car ⊕ Dirt Road, Suitable for Passenger Car ⊕ Road Not Suitable for Passenger Car ⊕ Closed Road ⊕ Existing "Unauthorized" Roads ⊕ Decommissioned Roads 	<ul style="list-style-type: none"> ⊕ Structure ⊕ Wildfire Daily Fire Perimeter ⊕ PACE: primary ⊕ PACE: alternate ⊕ PACE: contingency ⊕ PACE: emergency 	<p>FIREYEAR</p> <ul style="list-style-type: none"> ⊕ 1990-1999 ⊕ 2000-2009 ⊕ 2010-2014 ⊕ 2015-2017 ⊕ Roadless Conservation ⊕ Wilderness 	<ul style="list-style-type: none"> ⊕ FS ⊕ PVT ⊕ WA Dept of F&W ⊕ Washington DNR
--	--	--	---	--	--	---

0 0.25 0.5 1 Miles

