



# Briefing Map

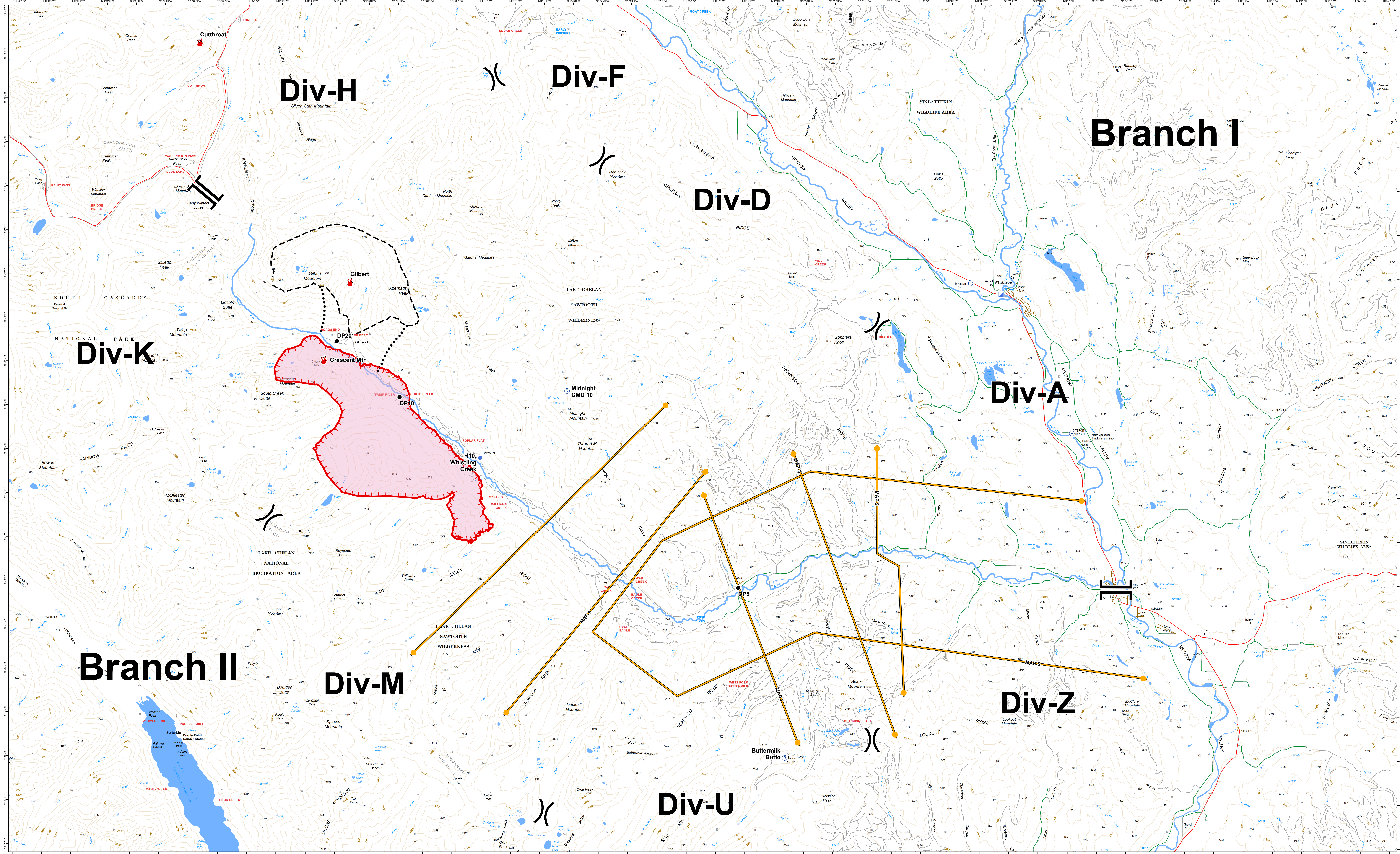
# Crescent Mountain Fire

WA-OWF-000428

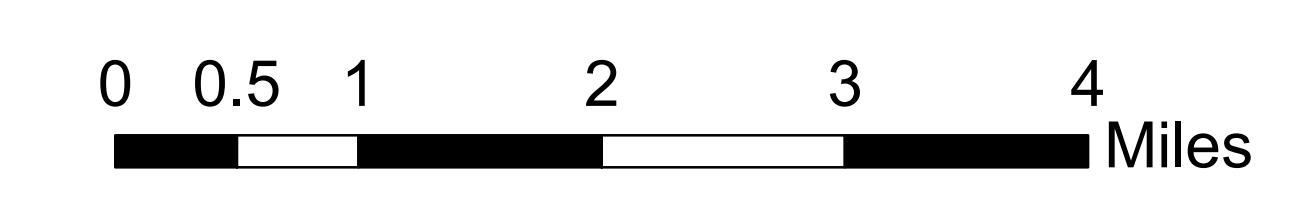
Approximate Acreage: 7,671



08/06/2018



- Wildfire Daily Fire Perimeter
- Uncontrolled Fire Edge
- Planned Fire Line
- Planned Secondary Line
- Management Action Point
- Camp
- Drop Point
- Fire Location
- Helibase
- Helispot
- Incident Command Post
- Repeater
- Division Break
- Branch Break
- Highway
- County Road
- City Road
- USFS road



08/05/2018 @ 1730  
NAD 83 USFS R6 Albers (Meters)  
SA Red Team GIS