



Operations Map

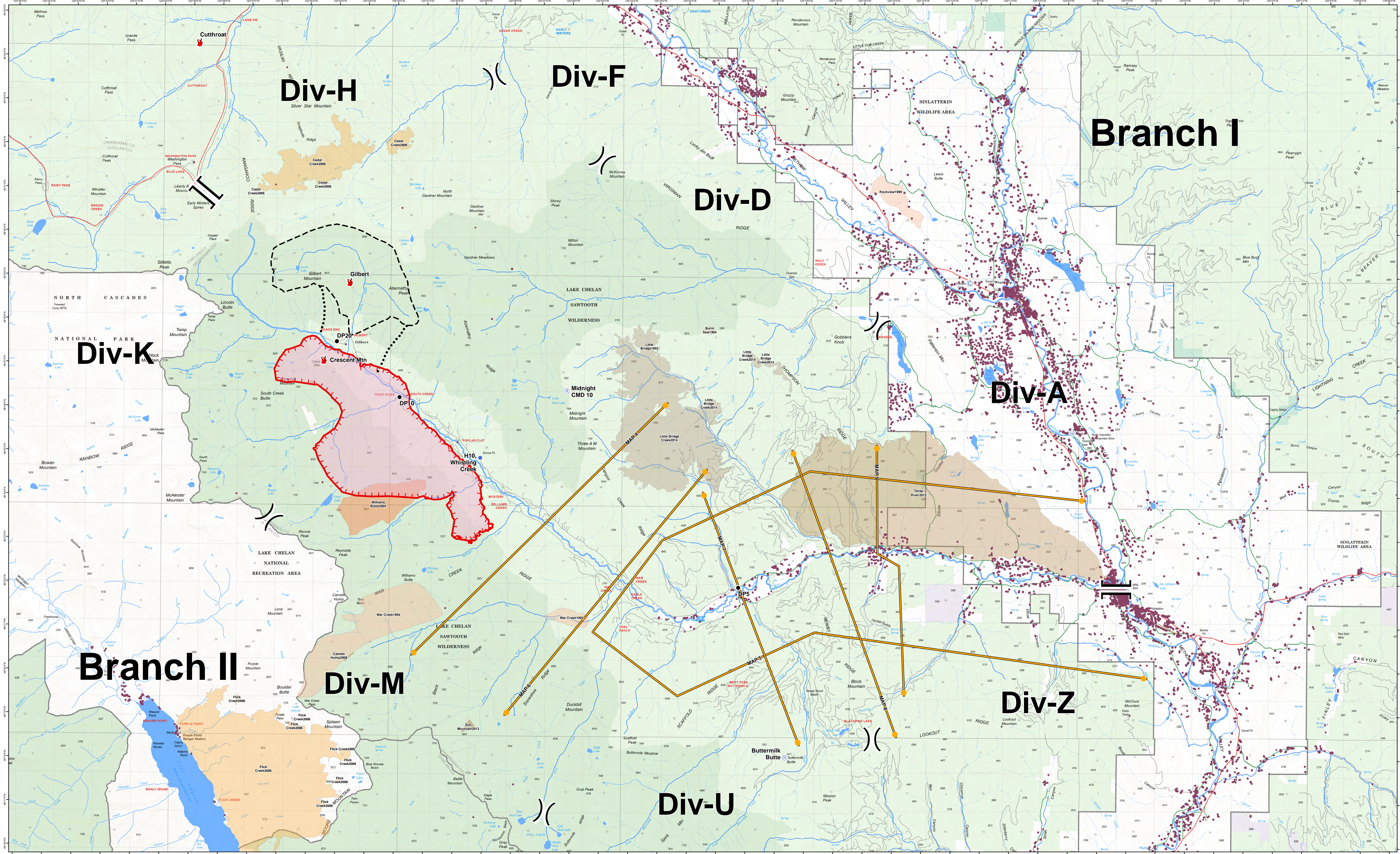
Crescent Mountain Fire

WA-OWF-000428

Approximate Acreage: 7,671



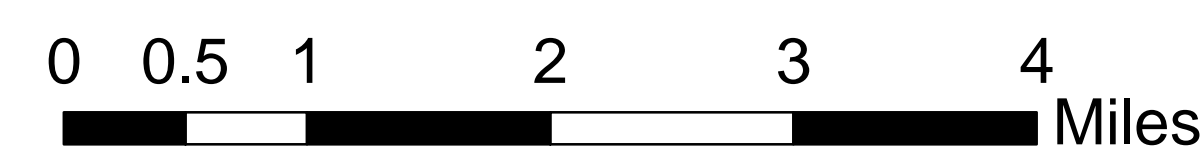
08/06/2018



- Ⓢ Camp
- Drop Point
- 🔥 Fire Location
- Ⓜ Helibase
- Ⓜ Helispot
- 📶 Incident Command Post
- 📶 Repeater
- 🔴 Structures
- 🔴 Uncontrolled Fire Edge
- ⎓ Division Break
- ⎓ Branch Break
- Planned Fire Line
- ⋯ Planned Secondary Line
- 👉 Management Action Point
- 📦 Wildfire Daily Fire Perimeter
- 📦 Ranger District

- Fire_History**
- 2008
 - 1992 - 1999
 - 2004
 - 2006
 - 2013
 - 2014
 - 2015

- OWNER**
- Highway
 - County Road
 - City Road
 - USFS road
 - PVT
 - FS
 - NPS
 - STATE
 - USFWS



08/05/2018 @ 1645
NAD 83 USFS R6 Albers (Meters)
SA Red Team GIS