

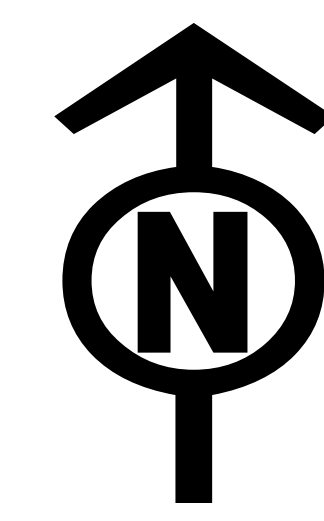


# IR Operations Map

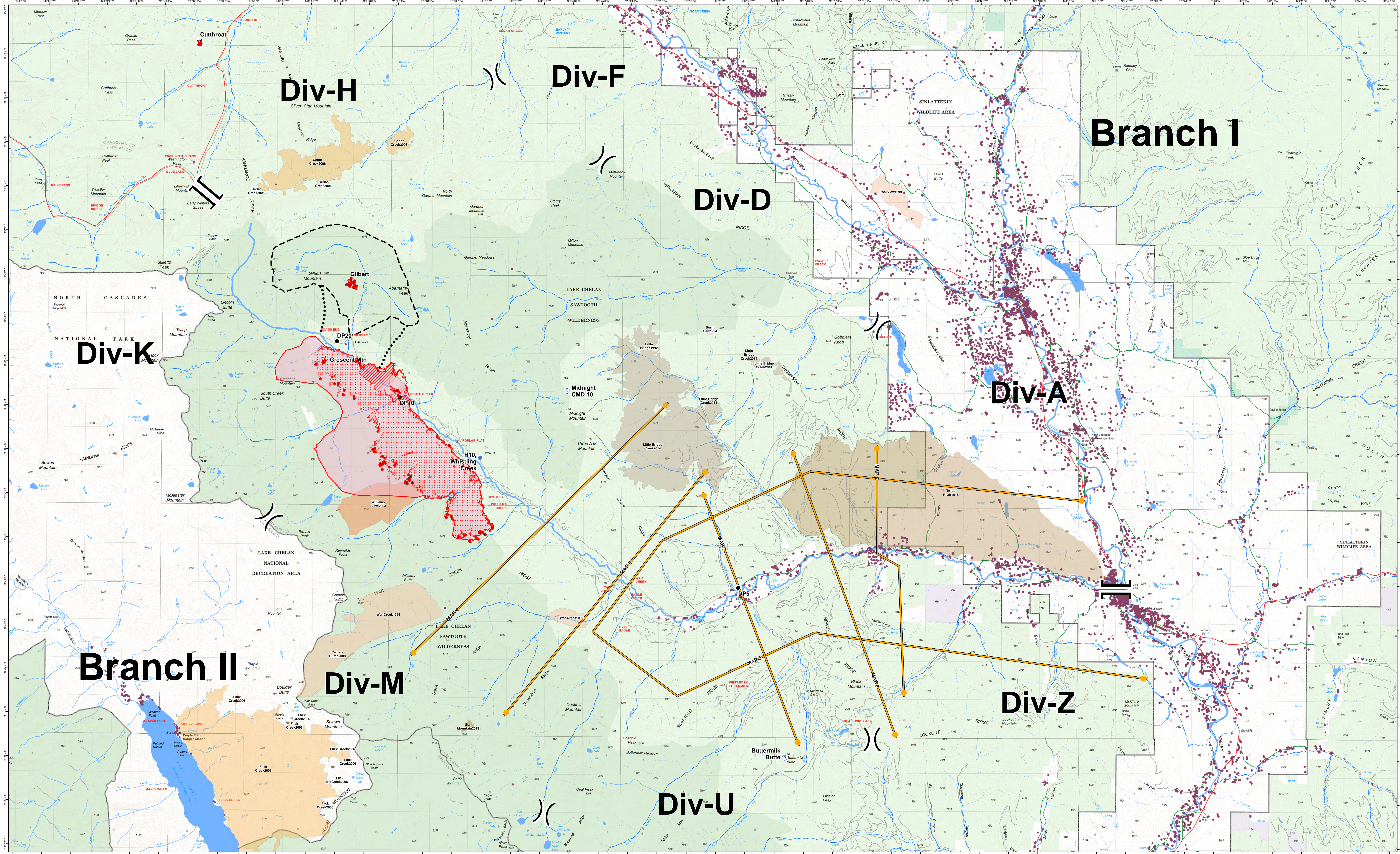
# Crescent Mountain Fire

WA-OWF-000428

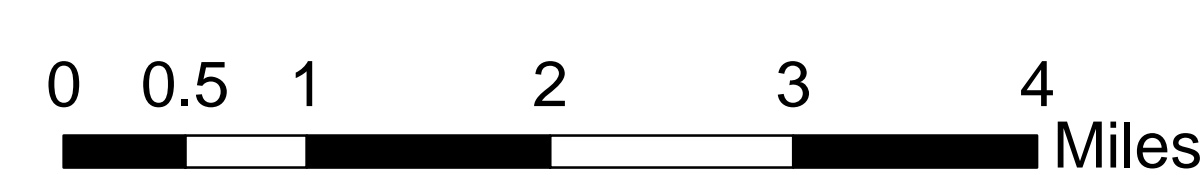
IR Acreage: 7,789



08/06/2018



- Ⓒ Camp
  - Drop Point
  - 🔥 Fire Location
  - ⊙ Helibase
  - ⊙ Helispot
  - 📶 Incident Command Post
  - Ⓜ Repeater
  - 🏠 Structures
  - 🔴 Uncontrolled Fire Edge
  - ⎓ Division Break
  - ⎓ Branch Break
  - Planned Fire Line
  - ⋯ Planned Secondary Line
  - 👉 Management Action Point
  - 🏠 Wildfire Daily Fire Perimeter
  - 🏠 Ranger District
- | Fire_History |      | OWNER |       |
|--------------|------|-------|-------|
| 2008         | 2013 | FS    | STATE |
| 1992 - 1999  | 2014 | NPS   | USFWS |
| 2004         | 2015 |       |       |
| 2006         |      |       |       |
- 🛣 Highway
  - 🛤 County Road
  - 🛤 City Road
  - 🛤 USFS road
  - 🔴 IR Isolated Heat Source
  - 🔴 IR Heat Perimeter
  - 🔴 IR Scattered Heat
  - 🔴 IR Intense Heat



08/06/2018 @ 0605  
NAD 83 USFS R6 Albers (Meters)  
SA Red Team GIS  
IR 20180806 0045 UTC