



# Public Information Map

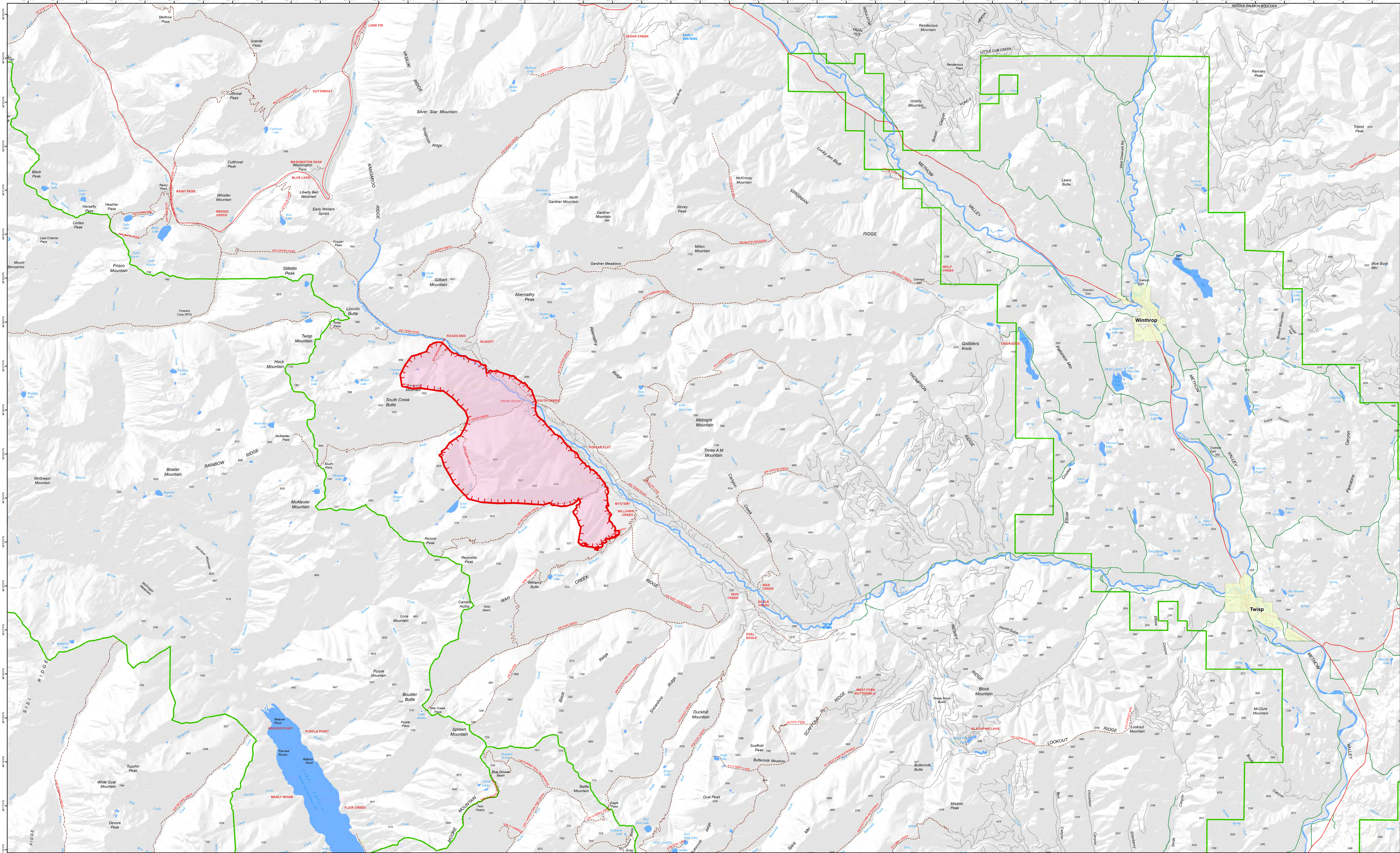
# Crescent Mountain Fire

WA-OWF-000428

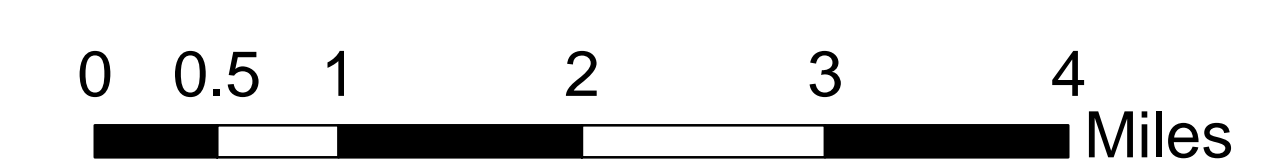
Approximate Acreage: 7,671



08/06/2018



- Towns
- Wildfire Daily Fire Perimeter
- Highway
- City Road
- Railroad
- RangerDistrict
- Uncontrolled Fire Edge
- County Road
- USFS road
- Trail



08/05/2018 @ 1945  
NAD 83 USFS R6 Albers (Meters)  
SA Red Team GIS