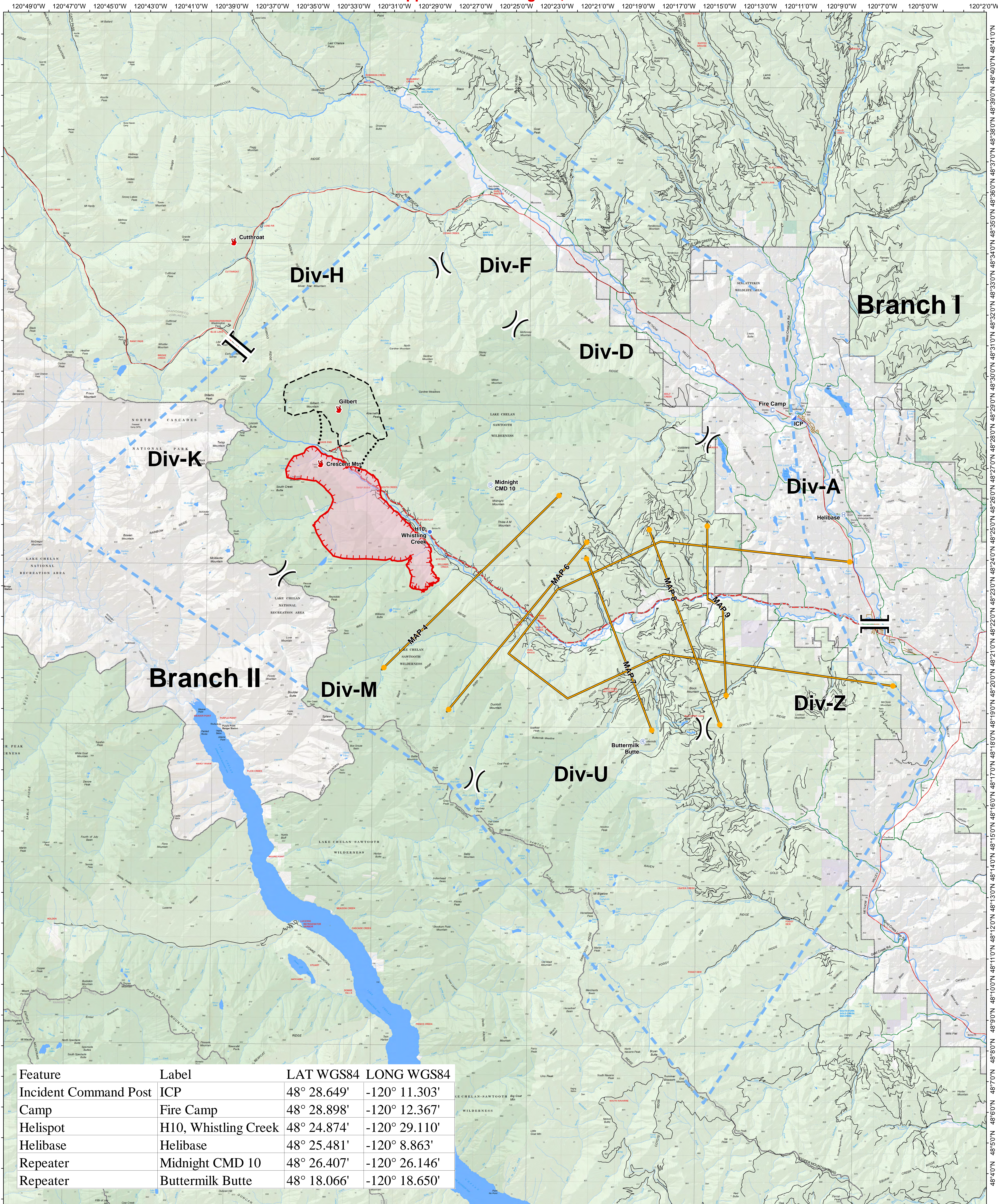


TFR - Operations Map

Crescent Mountain Fire

WA-OWF-000428

Approximate Acreage: 7,671



Feature	Label	LAT WGS84	LONG WGS84
Incident Command Post	ICP	48° 28.649'	-120° 11.303'
Camp	Fire Camp	48° 28.898'	-120° 12.367'
Helispot	H10, Whistling Creek	48° 24.874'	-120° 29.110'
Helibase	Helibase	48° 25.481'	-120° 8.863'
Repeater	Midnight CMD 10	48° 26.407'	-120° 26.146'
Repeater	Buttermilk Butte	48° 18.066'	-120° 18.650'

<ul style="list-style-type: none"> Division Break Helibase Helispot Incident Command Post Repeater Fire Location 	<ul style="list-style-type: none"> Uncontrolled Fire Edge Planned Fire Line Planned Secondary Line Management Action Point Wildfire Daily Fire Perimeter 	<ul style="list-style-type: none"> Twisp River Road Highway County Road City Road USFS road 	<ul style="list-style-type: none"> Waterbody Other stream Perennial Intermittent Ephemeral 	<ul style="list-style-type: none"> Ranger District township_whole Wilderness FS NPS PVT STATE USFWS
--	--	---	--	---

Daily Map Products QR Code

08/06/2018 @ 1144
NAD 83 USFS R6 Albers (Meters)
SA Red Team GIS
08/06/2018
0 1 2 4 6 8 Miles