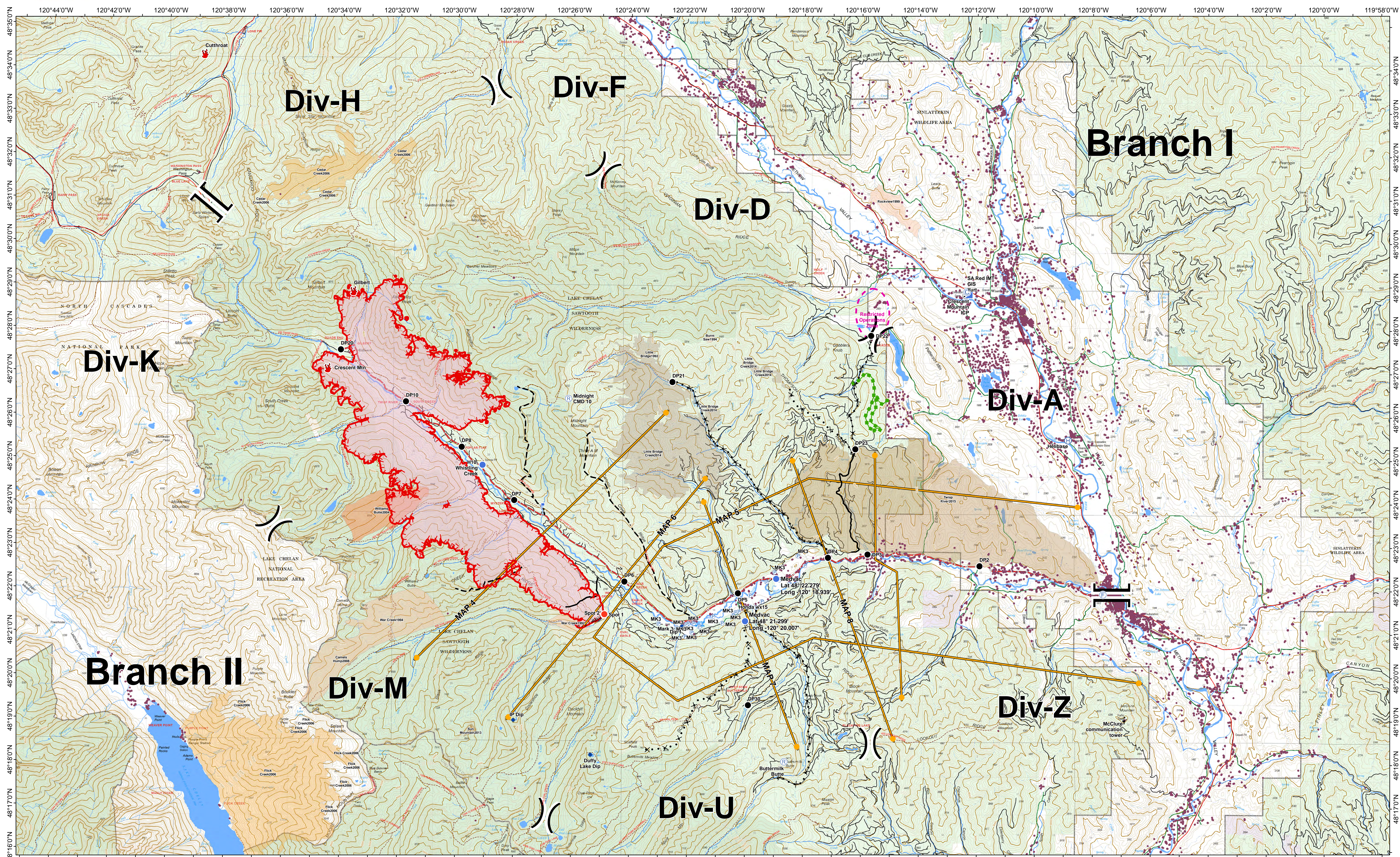




# Operations Map

# Crescent Mountain Fire WA-OWF-000428

08/10/2018

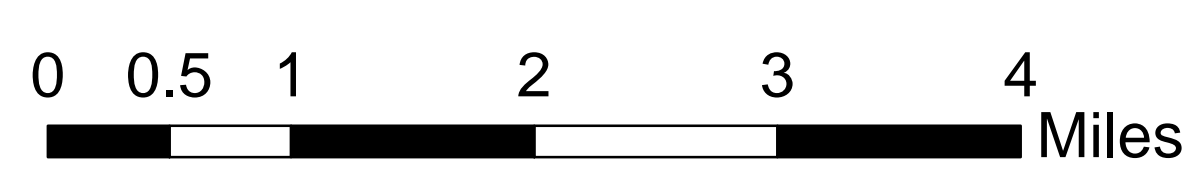
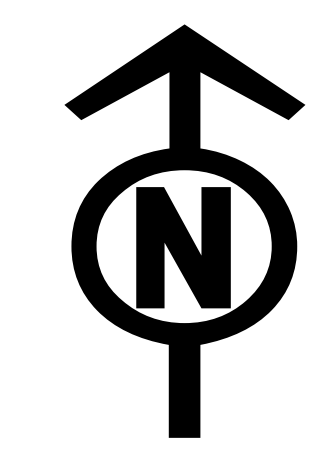


- Camp
- Drop Point
- Fire Location
- Helibase
- Helispot
- Incident Command Post
- Repeater
- Structures
- Uncontrolled Fire Edge
- Road as Completed Line
- Division Break
- Branch Break
- Trail
- Proposed Dozer Line

- Planned Fire Line
- Completed Line
- Management Action Point
- Restricted Operational Zone
- Wildfire Daily Fire Perimeter
- Ranger District

- Fire\_History**
- 2008
  - 1992 - 1999
  - 2004
  - 2006
  - 2013
  - 2014
  - 2015
- OWNER**
- FS
  - NPS
  - PVT
  - STATE
  - USFWS

- Twisp River Road
- Highway
- County Road
- City Road
- USFS road



08/09/2018 @ 1656  
 NAD 83 USFS R6 Albers (Meters)  
 SA Red Team GIS  
 Latest Intel: 20180809\_1500