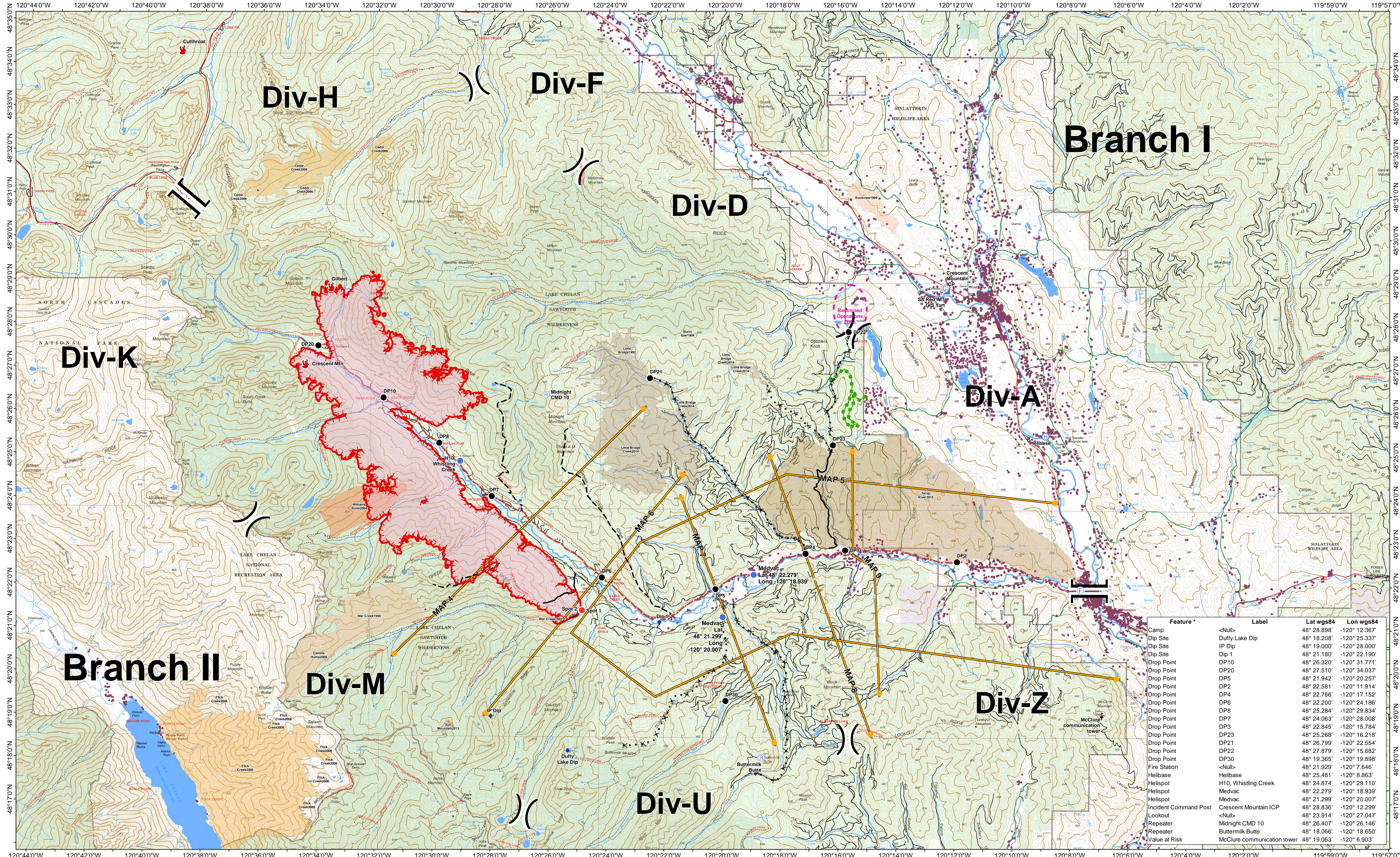




Safety - Operations Map

Crescent Mountain Fire WA-OWF-000428

08/10/2018

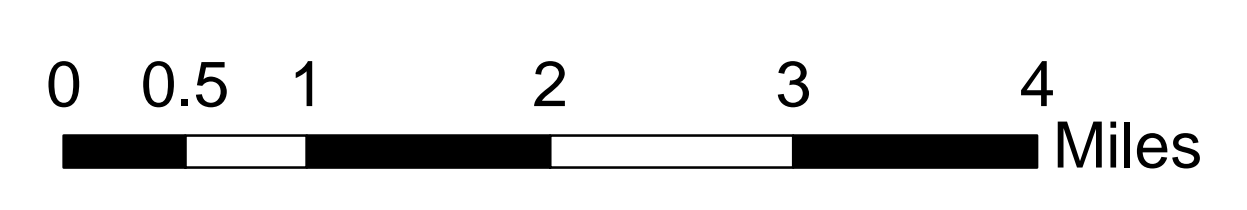
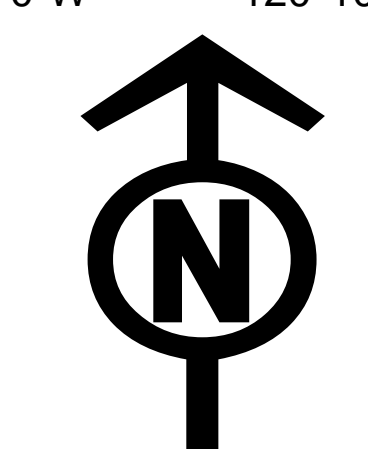


Feature	Label	Lat wgs84	Lon wgs84
Camp	<Null>	48° 28.898'	-120° 12.367'
Dip Site	Duffy Lake Dip	48° 18.208'	-120° 25.337'
Dip Site	IP Dip	48° 19.000'	-120° 28.000'
Dip Site	Dip 1	48° 21.180'	-120° 22.190'
Drop Point	DP10	48° 26.320'	-120° 31.771'
Drop Point	DP20	48° 27.510'	-120° 34.037'
Drop Point	DP5	48° 21.942'	-120° 20.257'
Drop Point	DP2	48° 22.581'	-120° 11.914'
Drop Point	DP4	48° 22.766'	-120° 17.152'
Drop Point	DP6	48° 22.200'	-120° 24.186'
Drop Point	DP8	48° 25.284'	-120° 29.834'
Drop Point	DP7	48° 24.063'	-120° 28.008'
Drop Point	DP3	48° 22.845'	-120° 15.784'
Drop Point	DP23	48° 25.268'	-120° 16.218'
Drop Point	DP21	48° 26.799'	-120° 22.554'
Drop Point	DP22	48° 27.879'	-120° 15.682'
Drop Point	DP30	48° 19.365'	-120° 19.898'
Fire Station	<Null>	48° 21.929'	-120° 7.646'
Helibase	Helibase	48° 25.481'	-120° 8.863'
Helispot	H10, Whistling Creek	48° 24.874'	-120° 29.110'
Helispot	Medvac	48° 22.279'	-120° 18.939'
Helispot	Medvac	48° 21.299'	-120° 20.007'
Incident Command Post	Crescent Mountain ICP	48° 28.836'	-120° 12.299'
Lookout	<Null>	48° 23.914'	-120° 27.047'
Repeater	Midnight CMD 10	48° 26.407'	-120° 26.146'
Repeater	Buttermilk Butte	48° 18.066'	-120° 18.650'
Value at Risk	McClure communication tower	48° 19.063'	-120° 6.903'

● Camp ■ Incident Command Post)) Division Break
 ● Drop Point Ⓜ Repeater)) Branch Break
 🔥 Fire Location ■ Structures)) Branch Break
 ● Helibase --- Uncontrolled Fire Edge --- Trail
 ● Helispot --- Road as Completed Line ✕ ✕ Proposed Dozer Line

Fire_History
 --- Planned Fire Line 2008 --- Twisp River Road
 --- Completed Line 1992 - 1999 --- Highway
 --- Management Action Point 2004 --- County Road
 --- Restricted Operational Zone 2013 --- City Road
 --- Wildfire Daily Fire Perimeter 2014 --- USFS road
 --- RangerDistrict 2015 --- USFS road
 --- RangerDistrict 2006

OWNER
 FS STATE
 NPS USFWS
 PVT



08/10/2018 @ 2044
 NAD 83 USFS R6 Albers (Meters)
 SA Red Team GIS
 Latest Intel: 20180809_1500