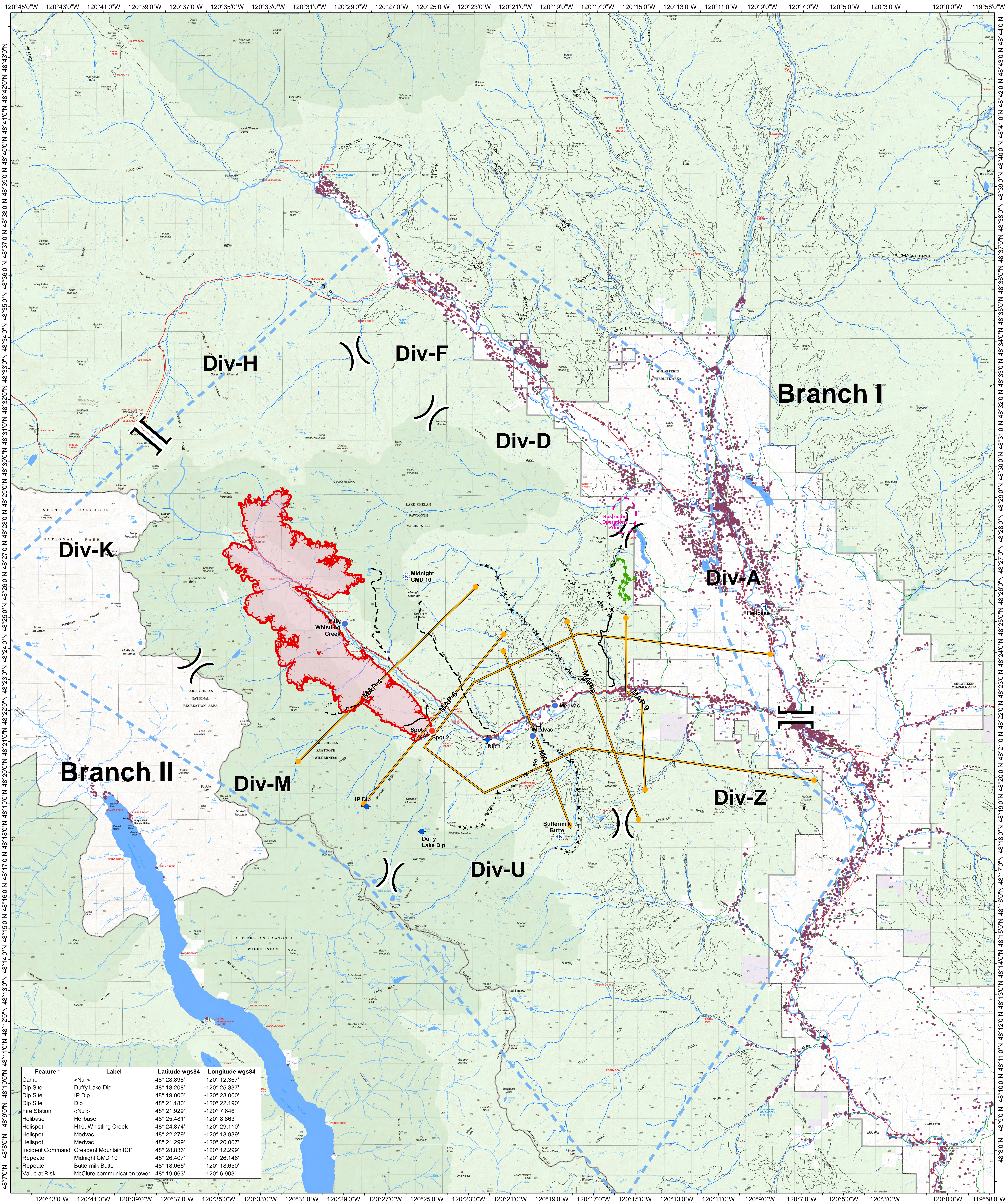


# TFR- Air Operations Map

# Crescent Mountain Fire

WA-OWF-000428

08/10/2018



Feature	Label	Latitude wgs84	Longitude wgs84
Camp	<Null>	48° 28.898'	-120° 12.367'
Dip Site	Duffy Lake Dip	48° 18.208'	-120° 25.337'
Dip Site	IP Dip	48° 19.000'	-120° 28.000'
Dip Site	Dip 1	48° 21.180'	-120° 22.190'
Fire Station	<Null>	48° 21.929'	-120° 7.646'
Helibase	Helibase	48° 25.481'	-120° 8.863'
Helispot	H10, Whistling Creek	48° 24.874'	-120° 29.110'
Helispot	Medvac	48° 22.279'	-120° 18.939'
Helispot	Medvac	48° 21.299'	-120° 20.007'
Incident Command	Crescent Mountain ICP	48° 28.836'	-120° 12.299'
Repeater	Midnight CMD 10	48° 26.407'	-120° 26.146'
Repeater	Buttermilk Butte	48° 18.066'	-120° 18.650'
Value at Risk	McClure communication tower	48° 19.063'	-120° 6.903'

<ul style="list-style-type: none"> <li>Camp</li> <li>Helibase</li> <li>Helispot</li> <li>Structures</li> <li>Repeater</li> <li>Incident Command Post</li> </ul>	<ul style="list-style-type: none"> <li>Division Break</li> <li>Branch Break</li> <li>Uncontrolled Fire Edge</li> <li>Temporary Flight Restriction</li> <li>Planned Fire Line</li> </ul>	<ul style="list-style-type: none"> <li>Planned Secondary Line</li> <li>Management Action Point</li> <li>Restricted Operational Zone</li> <li>Wildfire Daily Fire Perimeter</li> <li>RangerDistrict</li> </ul>	<b>Fire_History</b> <ul style="list-style-type: none"> <li>2008</li> <li>1992 - 1999</li> <li>2004</li> <li>2006</li> <li>2013</li> <li>2014</li> <li>2015</li> </ul>	<ul style="list-style-type: none"> <li>Twisp River Road</li> <li>Highway</li> <li>County Road</li> <li>City Road</li> <li>USFS road</li> </ul>	<b>OWNER</b> <ul style="list-style-type: none"> <li>FS</li> <li>NPS</li> <li>PVT</li> <li>STATE</li> <li>USFWS</li> </ul>	<p>OPS Avenza Maps QR Code</p>		<p>08/09/2018 @ 2009 NAD 83 USFS R6 Albers (Meters) SA Red Team GIS Latest Intel: 20180806_1500</p>	<p>0 0.75 1.5 3 4.5 6 Miles</p>
---	---	---	---	--	---	--------------------------------	--	---	---------------------------------