



# Div AA Map

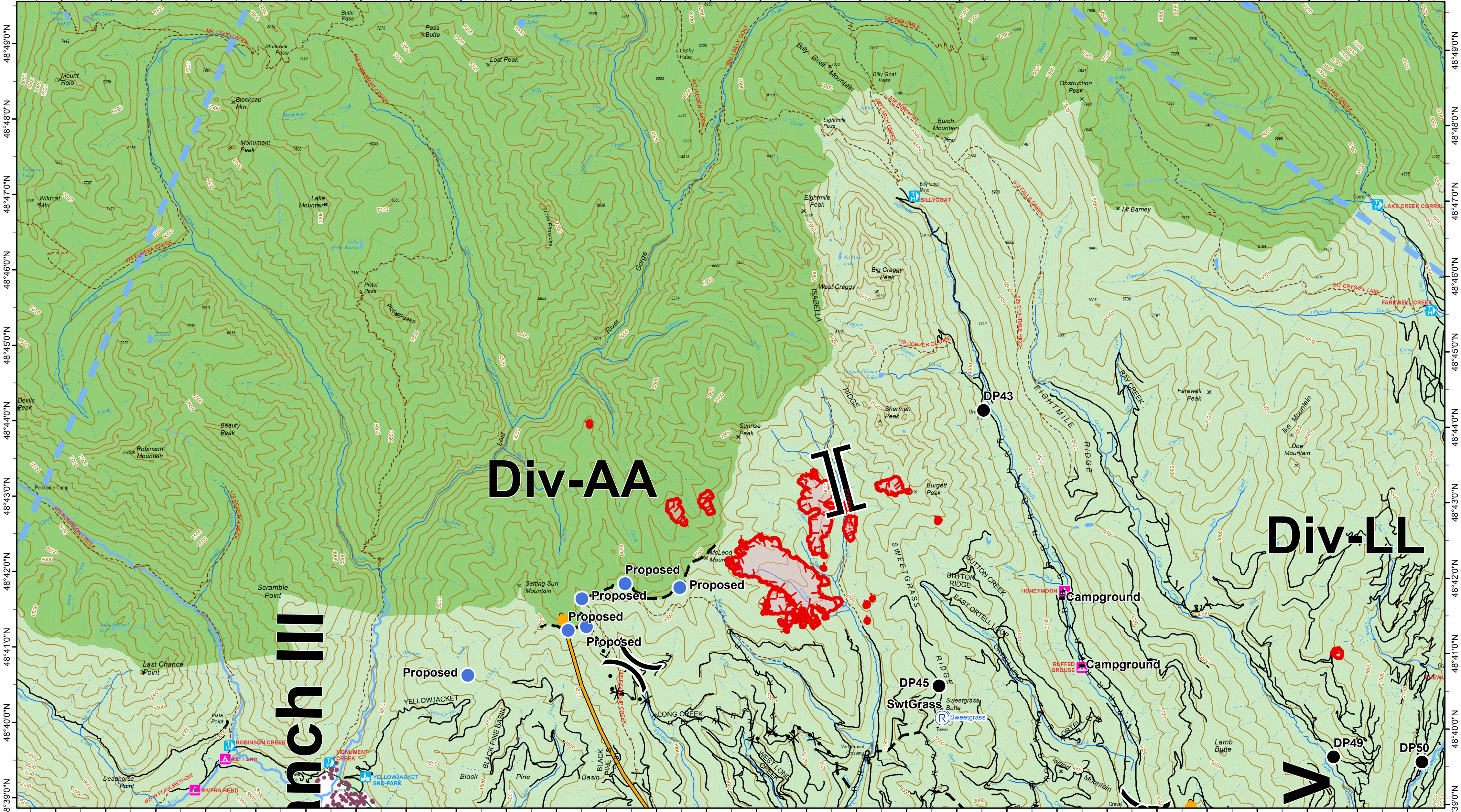
## Crescent Mountain Fire WA-OWF-000428

## McLeod Fire WA-OWF-000522

08/14/2018



120°36'0"W 120°35'0"W 120°34'0"W 120°33'0"W 120°32'0"W 120°31'0"W 120°30'0"W 120°29'0"W 120°28'0"W 120°27'0"W 120°26'0"W 120°25'0"W 120°24'0"W 120°23'0"W 120°22'0"W 120°21'0"W 120°20'0"W 120°19'0"W 120°18'0"W 120°17'0"W 120°16'0"W 120°15'0"W 120°14'0"W 120°13'0"W 120°12'0"W 120°11'0"W 120°10'0"W 120°9'0"W



- Wildfire Daily Fire Perimeter
- Structures
- Wilderness
- Ranger/District
- Restricted Operations Zone
- Camp
- Dip Site
- Drop Point
- Fire Location
- Fire Station
- Helibase
- Hot Spot
- Incident Command Post
- Internet Access
- Lookout
- Pump
- Repeater
- Value at Risk
- Division Break
- Branch Break
- Uncontrolled Fire Edge
- Completed Line
- Completed Hand Line
- R - Road as Completed Line
- Proposed Dozer Line
- Planned Fire Line
- Temporary Flight Restriction
- Escape Route
- Management Action Point

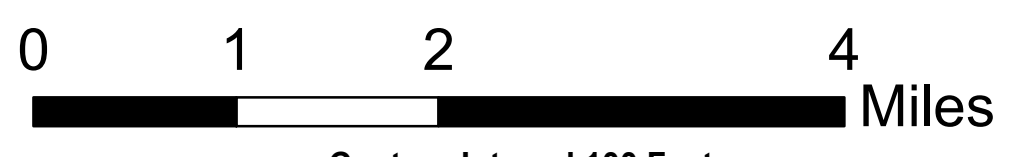
FIRE_YEAR	OWNER
2008	FS
2013	WA Dept of Fish and Wildlife
2014	NPS
2015	PVT
2016	STATE
2017	USFWS
1992 - 1999	City or Municipality
2000	WA State Parks and Recreation Commission
	Washington DNR

Lighting 20180811

- Positive
- Negative



Daily Map Products



Contour Interval 100 Feet

08/13/2018 @ 2143  
NAD 83 USFS R6 Albers (Meters)  
SA Red Team GIS  
Latest Intel: 20180812 @ 2306

