

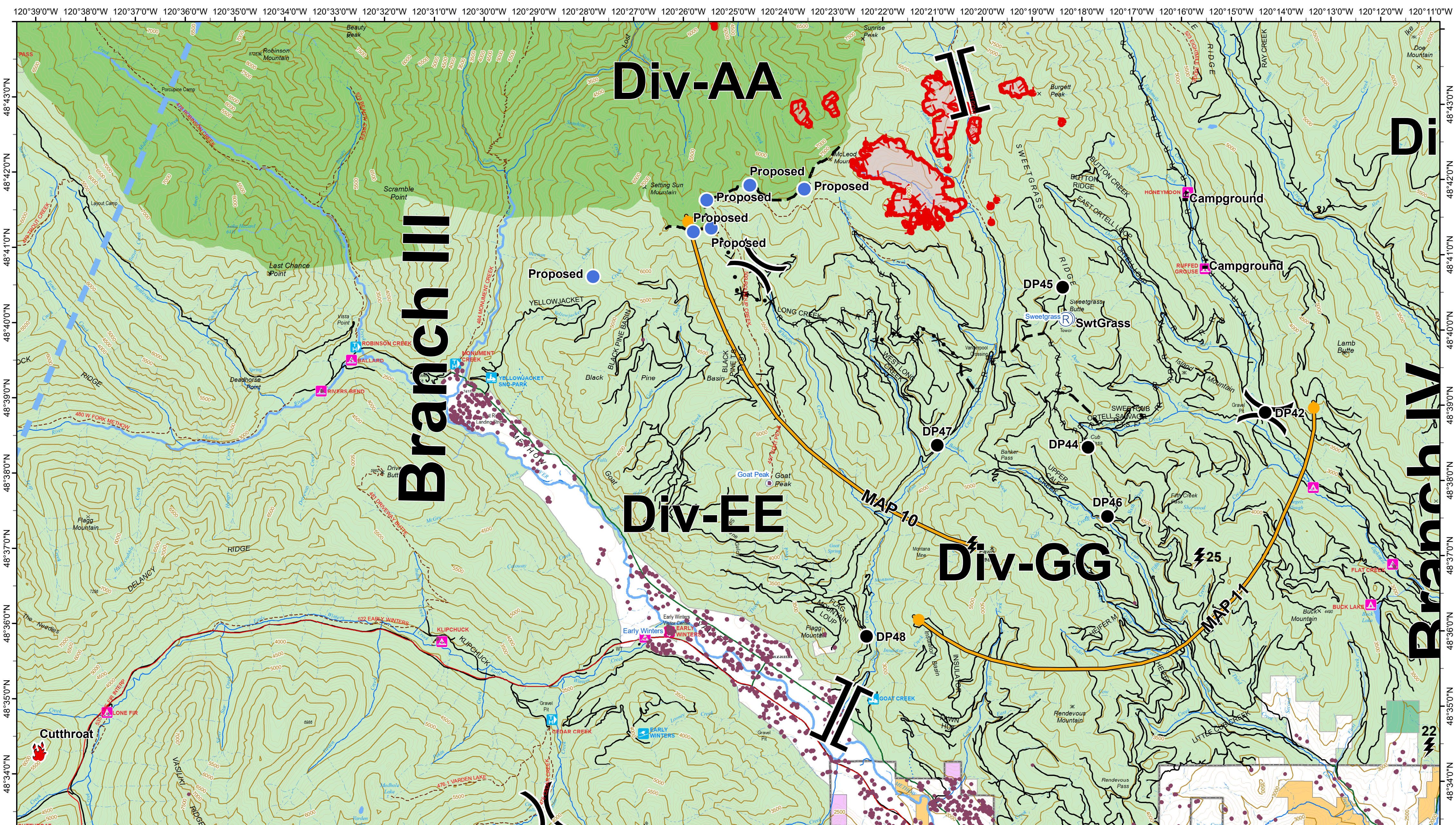


Div EE Map

Crescent Mountain Fire WA-OWF-000428

McLeod Fire WA-OWF-000522

08/14/2018



- Wildfire Daily Fire Perimeter
- Structures
- Wilderness
- Ranger/District
- Restricted Operations Zone
- Camp
- Drip Site
- Drop Point
- Fire Location
- Fire Station
- Helibase
- Helispot
- Hot Spot
- Incident Command Post
- Internet Access
- Lookout
- Pump
- Repeater
- Value at Risk

- Division Break
- Branch Break
- Uncontrolled Fire Edge
- Completed Line
- Planned Fire Line
- Completed Hand Line
- Road as Completed Line

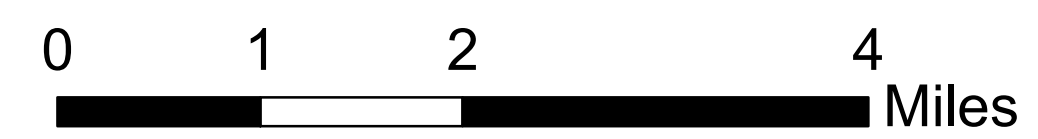
FIRE_YEAR	OWNER
2008	FS
2013	WA Dept of Fish and Wildlife
1992 - 1999	NPS
2004	PVT
2015	STATE
2006	USFWS

- 2008 Twisp River Road
- 2013 Highway
- 1992 - 1999 County Road
- 2004 City Road
- 2015 USFS road
- 2006 Trail
- City or Municipality
- WA State Parks and Recreation Commission
- Washington DNR

- Lighting 20180811
- Positive
 - Negative



Daily Map Products



Contour Interval 100 Feet

08/13/2018 @ 2143
NAD 83 USFS R6 Albers (Meters)
SA Red Team GIS
Latest Intel: 20180812 @ 2306

