



Div LL Map

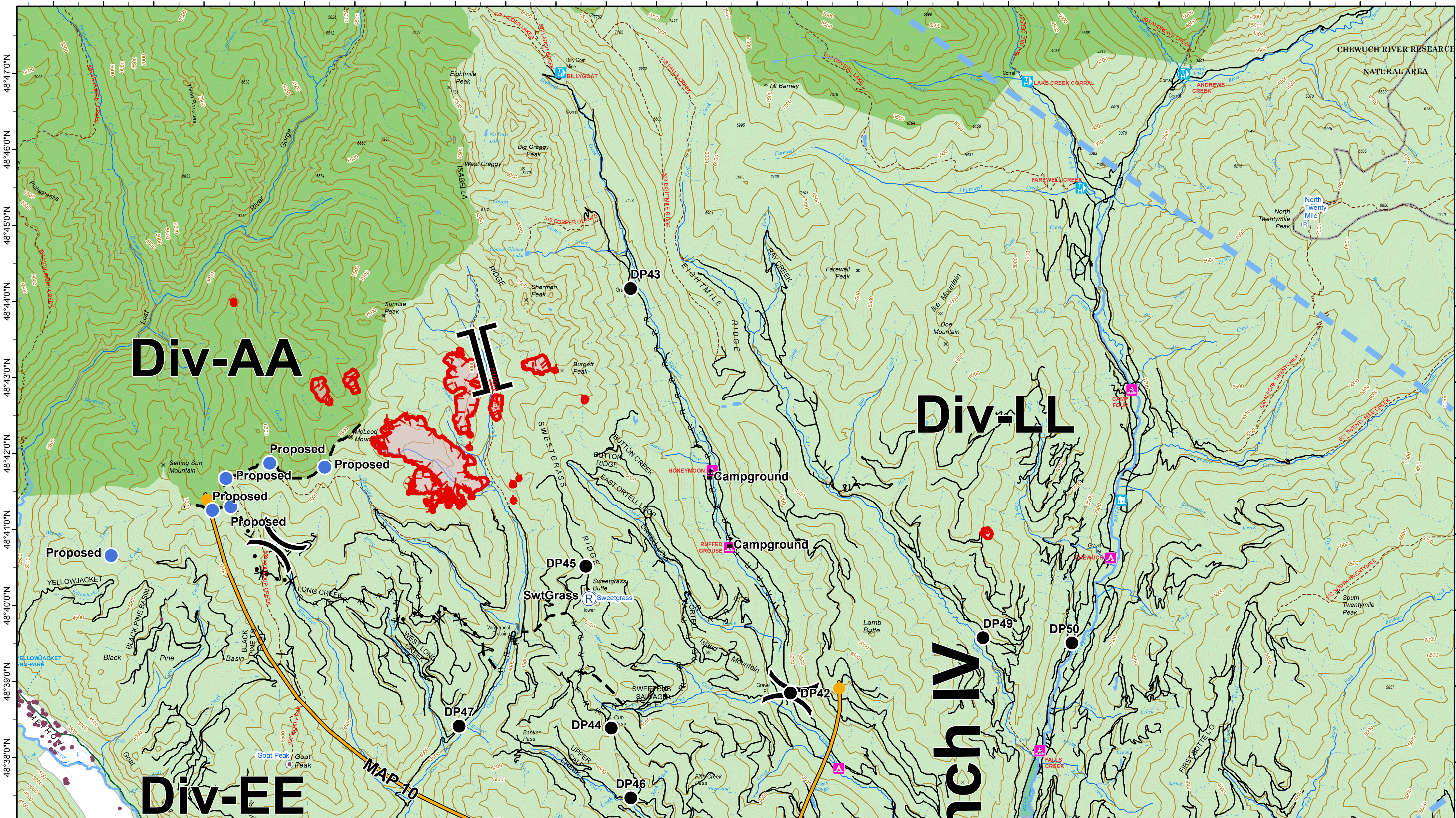
Crescent Mountain Fire WA-OWF-000428

McLeod Fire WA-OWF-000522

08/14/2018



120°29'0"W 120°28'0"W 120°27'0"W 120°26'0"W 120°25'0"W 120°24'0"W 120°23'0"W 120°22'0"W 120°21'0"W 120°20'0"W 120°19'0"W 120°18'0"W 120°17'0"W 120°16'0"W 120°15'0"W 120°14'0"W 120°13'0"W 120°12'0"W 120°11'0"W 120°10'0"W 120°9'0"W 120°8'0"W 120°7'0"W 120°6'0"W 120°5'0"W 120°4'0"W 120°3'0"W 120°2'0"W



120°29'0"W 120°28'0"W 120°27'0"W 120°26'0"W 120°25'0"W 120°24'0"W 120°23'0"W 120°22'0"W 120°21'0"W 120°20'0"W 120°19'0"W 120°18'0"W 120°17'0"W 120°16'0"W 120°15'0"W 120°14'0"W 120°13'0"W 120°12'0"W 120°11'0"W 120°10'0"W 120°9'0"W 120°8'0"W 120°7'0"W 120°6'0"W 120°5'0"W 120°4'0"W 120°3'0"W 120°2'0"W

- Wildfire Daily Fire Perimeter
- Structures
- Wilderness
- Ranger/District
- Restricted Operations Zone
- Camp
- Dip Site
- Drop Point
- Fire Location
- Fire Station
- Helibase
- Helispot
- Hot Spot
- Incident Command Post
- Internet Access
- Lookout
- Pump
- Repeater
- Value at Risk

- Uncontrolled Fire Edge
- Completed Line
- Completed Dozer Line
- Completed Hand Line
- R - Road as Completed Line
- Proposed Dozer Line
- Planned Fire Line
- Temporary Flight Restriction
- Escape Route
- Management Action Point

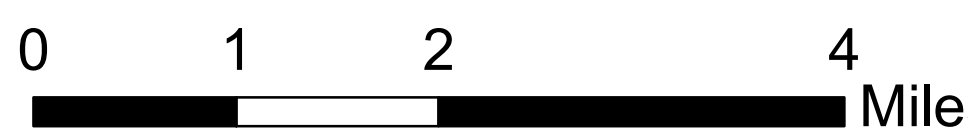
- FIRE_YEAR**
- 2008
- 2009
- 2010
- 2011
- 2012
- 2013
- 2014
- 2015
- 2016
- 2017
- 2018

- OWNER**
- FS
- WA Dept of Fish and Wildlife
- NPS
- WA State Parks and Recreation Commission
- Washington DNR
- City or Municipality
- City Road
- PVT
- STATE
- USFWS
- USFS road
- Trail

- Lighting 20180811**
- Positive
- Negative



Daily Map Products



Contour Interval 100 Feet



08/13/2018 @ 2143
NAD 83 USFS R6 Albers (Meters)
SA Red Team GIS
Latest Intel: 20180812 @ 2306