

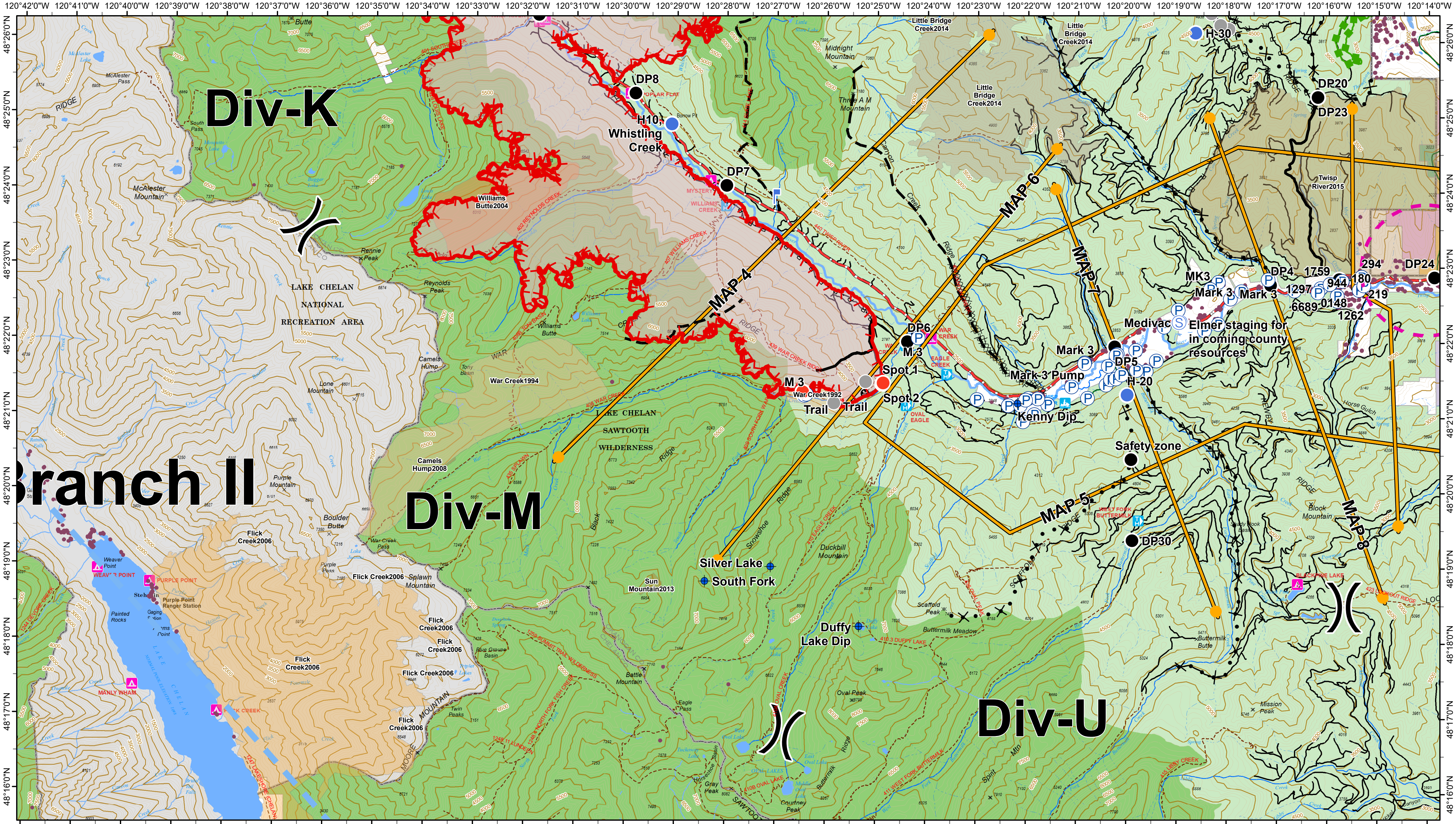


Div M Map

Crescent Mountain Fire WA-OWF-000428

McLeod Fire WA-OWF-000522

08/14/2018



| | | | | | | | | | | | |
|--|---|--|--|---|--|--|---|--|---------------------------|---|--|
| <ul style="list-style-type: none"> Wildfire Daily Fire Perimeter Structures Wilderness Ranger District Restricted Operations Zone | <ul style="list-style-type: none"> Camp Dip Site Drop Point Fire Location Fire Station Helibase Hot Spot | <ul style="list-style-type: none"> Incident Command Post Lookout Internet Access Pump Repeater Value at Risk | <ul style="list-style-type: none"> Uncontrolled Fire Edge Completed Line Planned Fire Line Completed Dozer Line Completed Hand Line Road as Completed Line | <ul style="list-style-type: none"> Proposed Dozer Line Planned Fire Line Temporary Flight Restriction Escape Route Management Action Point | FIRE_YEAR <ul style="list-style-type: none"> 2008 2013 2014 2015 2016 2017 2018 | OWNER <ul style="list-style-type: none"> FS WA Dept of Fish and Wildlife NPS PVT STATE USFWS | <ul style="list-style-type: none"> City or Municipality Highway County Road City Road USFS road Trail | Lighting 20180811 <ul style="list-style-type: none"> Positive Negative | <p>Daily Map Products</p> | <p>0 1 2 4 Miles</p> <p>Contour Interval 100 Feet</p> | |
|--|---|--|--|---|--|--|---|--|---------------------------|---|--|

08/13/2018 @ 2143
NAD 83 USFS R6 Albers (Meters)
SA Red Team GIS
Latest Intel: 20180812 @ 2306